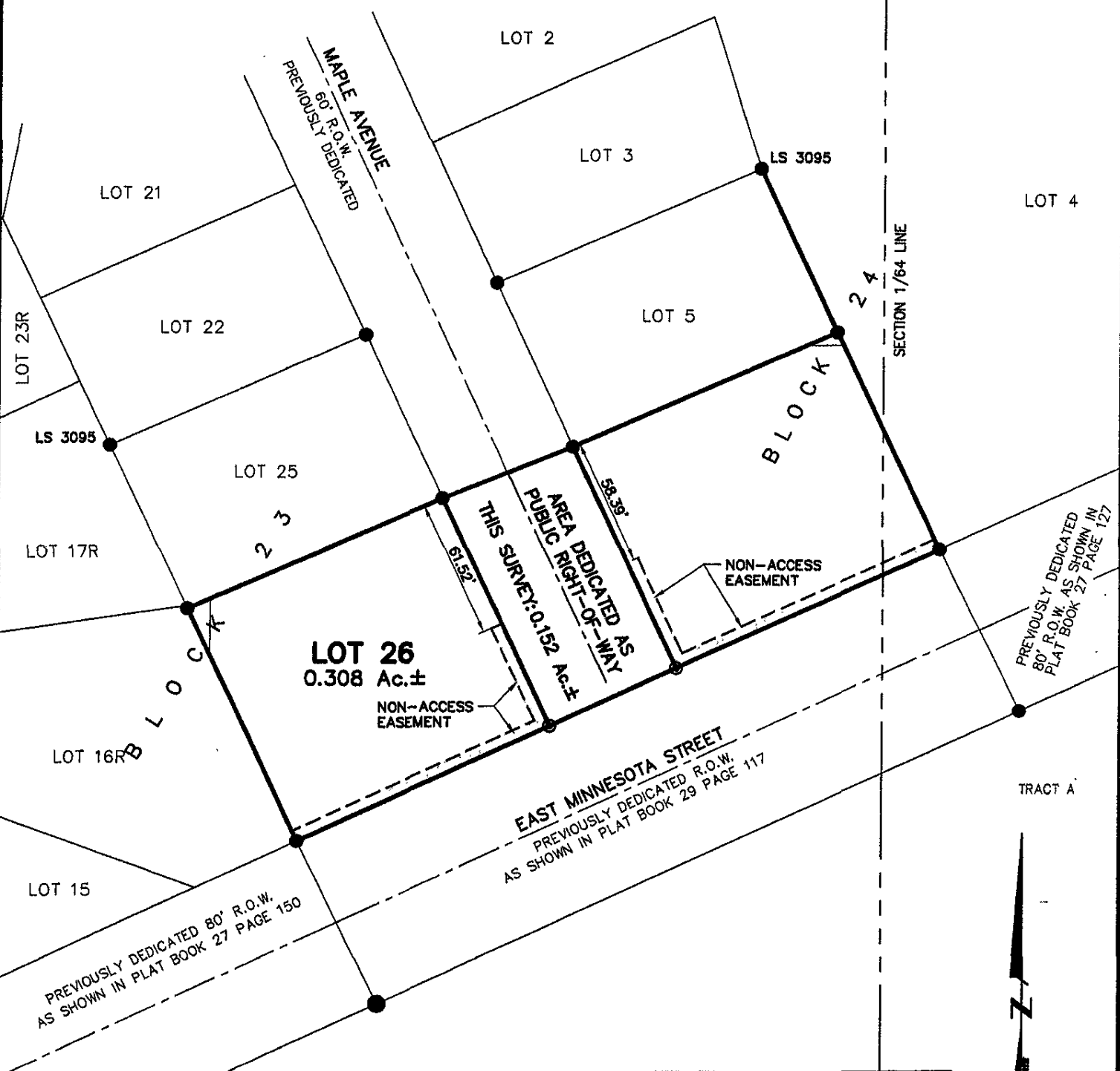


02SV018

# PLAT OF LOT 26 OF BLOCK 23, AND LOT 6 OF BLOCK 24, ROBBINSDALE ADDITION NO. 10

(formerly a portion of Tract A of Robbinsdale Addition No. 10 and  
a portion of the NE1/4 of the SE1/4 of Section 13)

LOCATED IN THE NE1/4 OF THE SE1/4  
SECTION 13, T1N, R7E, BHM  
RAPID CITY, PENNINGTON COUNTY, SOUTH DAKOTA



**LOT 26**  
0.308 Ac.±

AREA DEDICATED AS  
PUBLIC RIGHT-OF-WAY  
THIS SURVEY: 0.152 Ac.±

**EAST MINNESOTA STREET**  
PREVIOUSLY DEDICATED R.O.W.  
AS SHOWN IN PLAT BOOK 29 PAGE 117



**Renner & Sperlich Engineering Co.**

616 Sixth St. \* Rapid City, SD 57701 \* 605/342-1191  
FAX: 605/342-1405 \* E-MAIL: Y19FIAT@AOL.COM

MARCH 5, 2002



SCALE 1" = 60'

