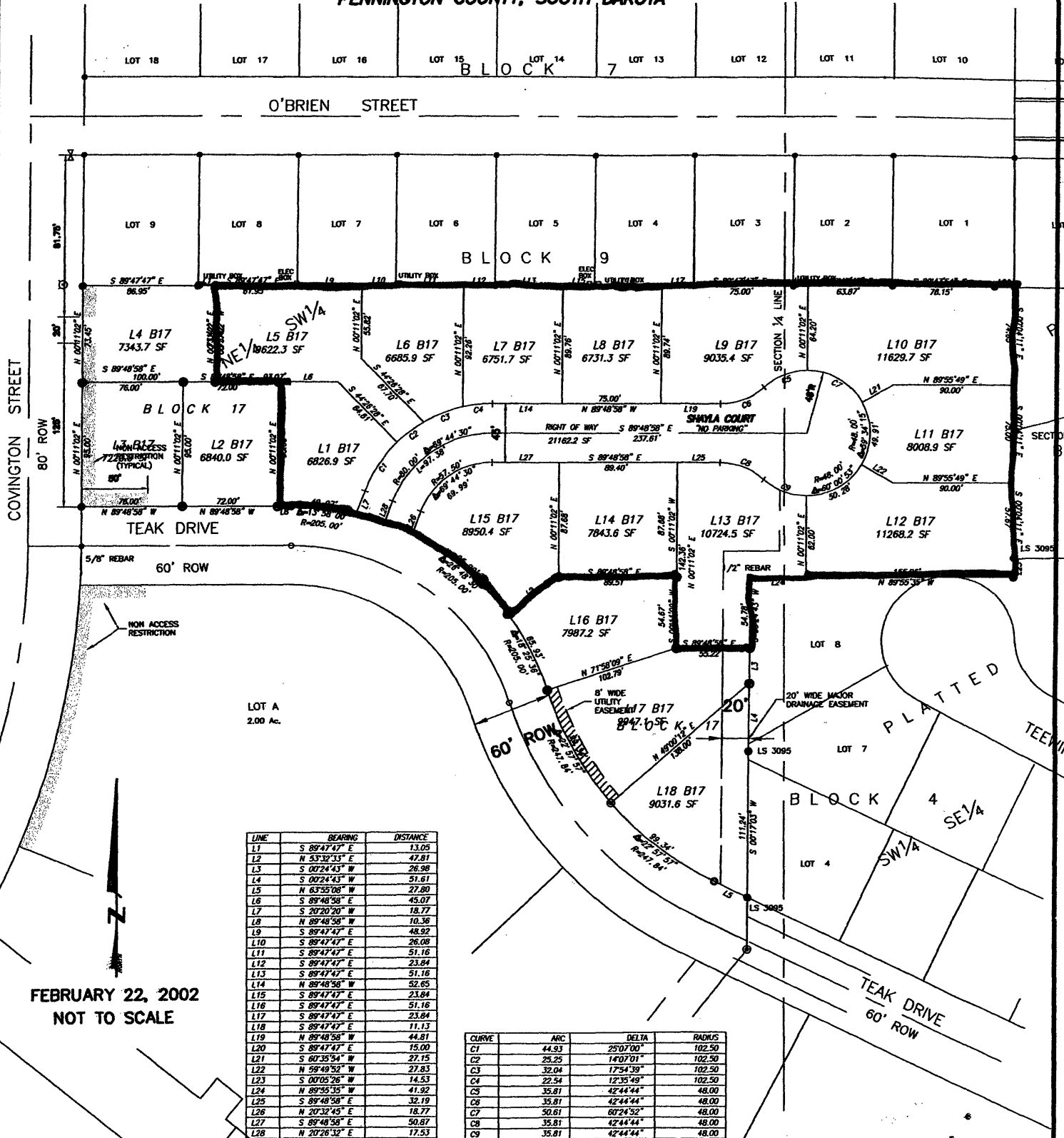


PLAT OF LOTS 1, AND 5 THRU 15 OF BLOCK 17 OF TRAILWOOD VILLAGE

(FORMERLY A PORTION OF TRACT T OF TRAILWOOD VILLAGE)
LOCATED IN THE E $\frac{1}{2}$ OF THE SW $\frac{1}{4}$ OF SECTION 10, T1N, R8E, B.H.M.
PENNINGTON COUNTY, SOUTH DAKOTA



LINE	BEARING	DISTANCE
L1	S 89°47'47" E	13.09
L2	N 53°32'11" E	47.81
L3	S 02°24'43" W	26.98
L4	S 02°24'43" W	51.61
L5	N 63°35'08" W	27.80
L6	S 89°48'58" E	45.07
L7	S 20°20'20" W	18.77
L8	N 89°48'58" W	10.36
L9	S 89°47'47" E	48.92
L10	S 89°47'47" E	26.08
L11	S 89°47'47" E	51.16
L12	S 89°47'47" E	23.84
L13	S 89°47'47" E	51.16
L14	N 89°48'58" W	52.65
L15	S 89°47'47" E	23.84
L16	S 89°47'47" E	51.16
L17	S 89°47'47" E	23.84
L18	S 89°47'47" E	11.13
L19	N 89°48'58" W	44.81
L20	S 89°47'47" E	15.00
L21	S 60°35'54" W	27.15
L22	N 59°48'52" W	27.83
L23	S 00°05'26" W	14.53
L24	N 89°35'35" W	41.92
L25	S 89°48'58" E	32.19
L26	N 23°42'45" E	12.73
L27	S 89°48'58" E	50.87
L28	N 20°26'32" E	17.53

CURVE	ARC	DELTA	RADIUS
C1	44.93	250°00"	102.50
C2	25.25	140°01"	102.50
C3	32.04	175°43"	102.50
C4	22.54	12°35'49"	102.50
C5	35.81	42°44'44"	48.00
C6	35.81	42°44'44"	48.00
C7	30.61	80°24'52"	48.00
C8	35.81	42°44'44"	48.00
C9	35.81	42°44'44"	48.00

FEBRUARY 22, 2002
NOT TO SCALE