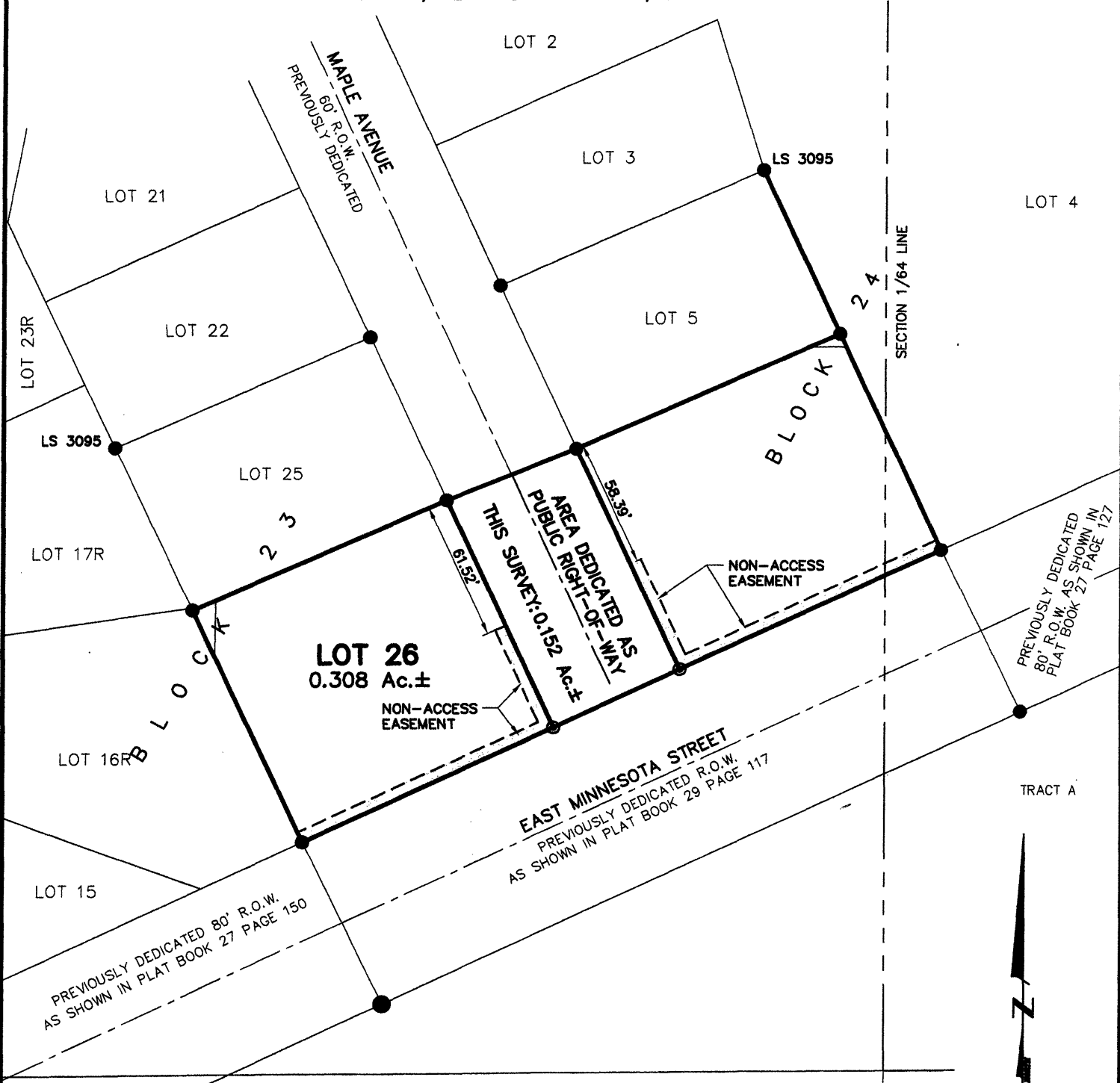


02PL022

PLAT OF
LOT 26 OF BLOCK 23, AND LOT 6 OF BLOCK 24,
ROBBINSDALE ADDITION NO. 10

(formerly a portion of Tract A of Robbinsdale Addition No. 10 and
a portion of the NE1/4 of the SE1/4 of Section 13)

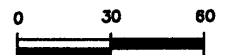
LOCATED IN THE NE1/4 OF THE SE1/4
SECTION 13, T1N, R7E, BHM
RAPID CITY, PENNINGTON COUNTY, SOUTH DAKOTA



TRACT B
Renner & Sperlich Engineering Co.

616 Sixth St. * Rapid City, SD 57701 * 605/342-1191
FAX: 605/342-1405 * E-MAIL: X19FIAT@AOL.COM

MARCH 5, 2002



SCALE 1" = 60'