

EXHIBIT A

GRANT OF MAJOR DRAINAGE EASEMENT

LOT A OF KORMYLO SUBDIVISION

LOCATED IN THE SW1/4 NW1/4 OF SECTION 17, T1N, R8E, BHM,
RAPID CITY, PENNINGTON COUNTY, SOUTH DAKOTA

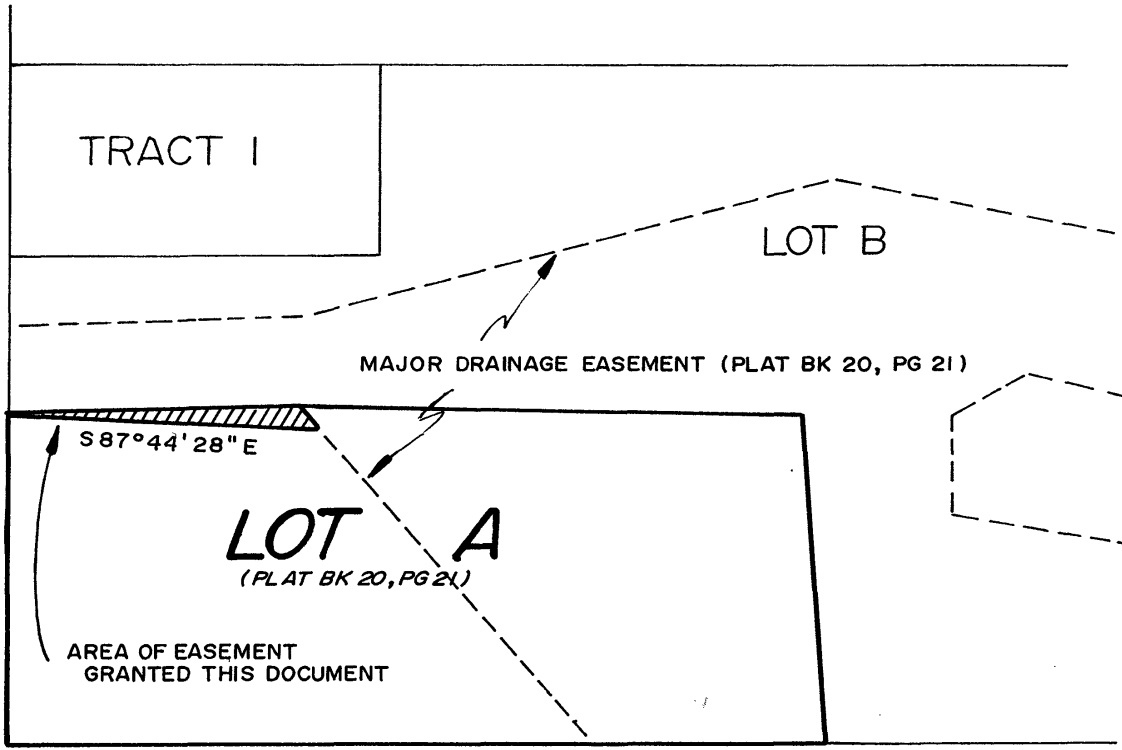
02VE004



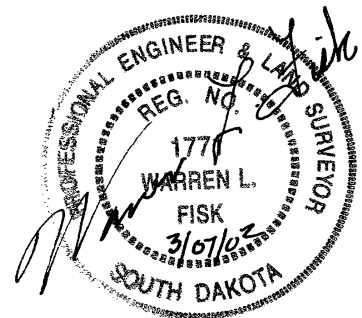
1" = 100'

SECTION 18
SECTION 17

US HIGHWAY 79



PREPARED BY:
FISK LAND SURVEYING & CONSULTING ENGINEERS, INC.
PO BOX 8154, RAPID CITY, SD 57709 (605) 348-1538 MARCH 4, 2002



NO. 01-01-01