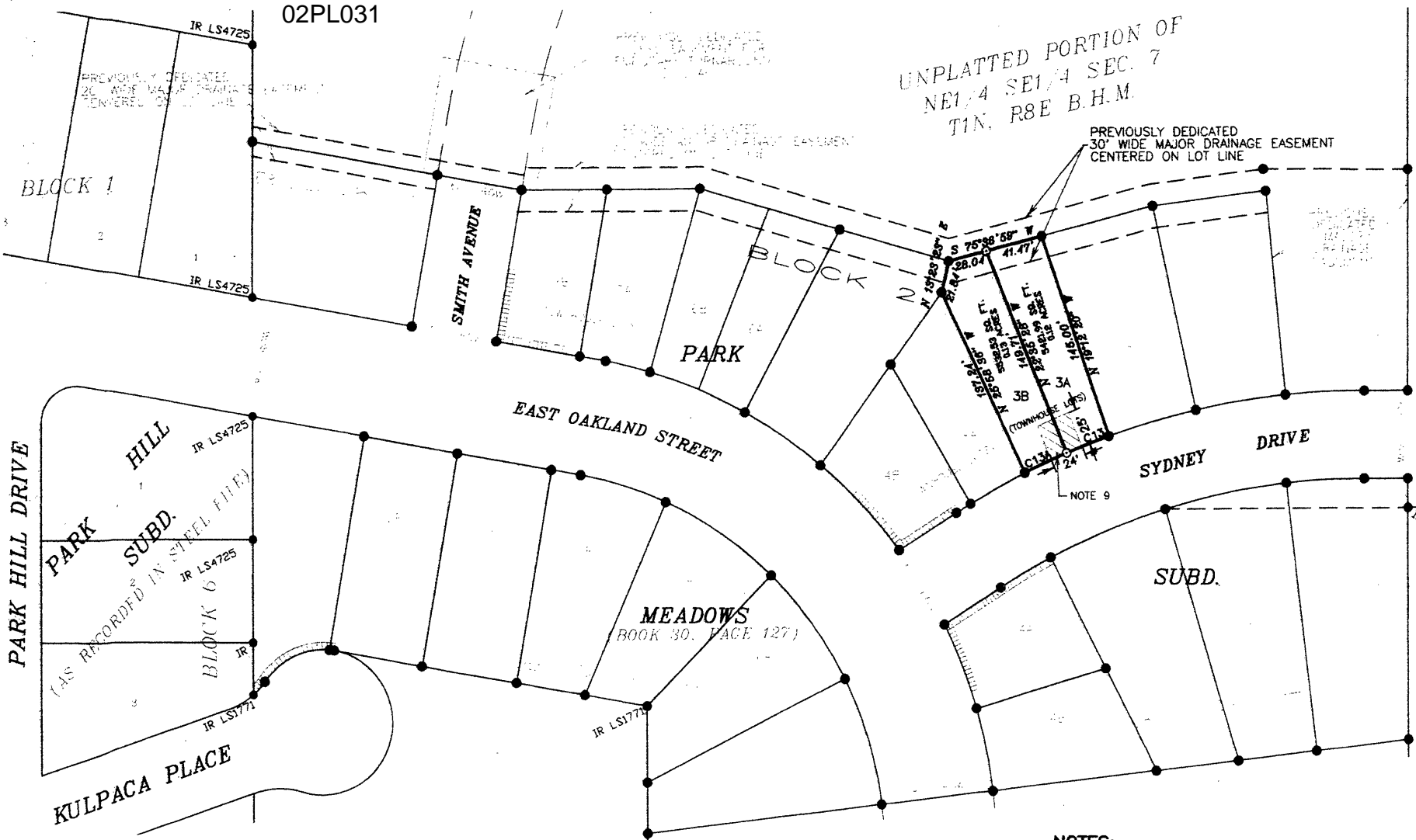


02PL031

UNPLATTED PORTION OF
NE 1/4 SE 1/4 SEC. 7
T1N. R8E B.H.M.

PREVIOUSLY DEDICATED
30' WIDE MAJOR DRAINAGE EASEMENT
CENTERED ON LOT LINE



WILMA STREET
POLAR BEAR SUBD.
LOT 38
(BOOK 24, PAGE 94)

TABLE OF CURVE DATA

NUMBER	DELTA ANGLE	RADIUS (FT)	ARC LENGTH (FT)
C13	03°23'08"	550.00	32.50
C13A	03°23'08"	550.00	32.50

NOTES:

1. All major drainage easements shown hereon shall be kept free of all obstructions including not limited to buildings, walls, fences, hedges, trees and shrubs. These easements grant to public authorities the right to construct, operate, maintain, inspect and repair such improvements and structures as it deems expedient to facilitate drainage from any source.
2. Building Setback requirements are as stated in the zoning and/or platting regulations.
3. Utility and Minor Drainage Easements - 8' on the interior side of all front side and rear

LEGEND

- SET 5/8" REBAR W/ CAP MARKED CETEC LS 4725
- SET 5/8" REBAR W/ CAP MARKED CETEC LS 4725 ROW P.C.'s, P.T.'s, AND EASEMENT CORNERS
- FOUND SURVEY MONUMENT

