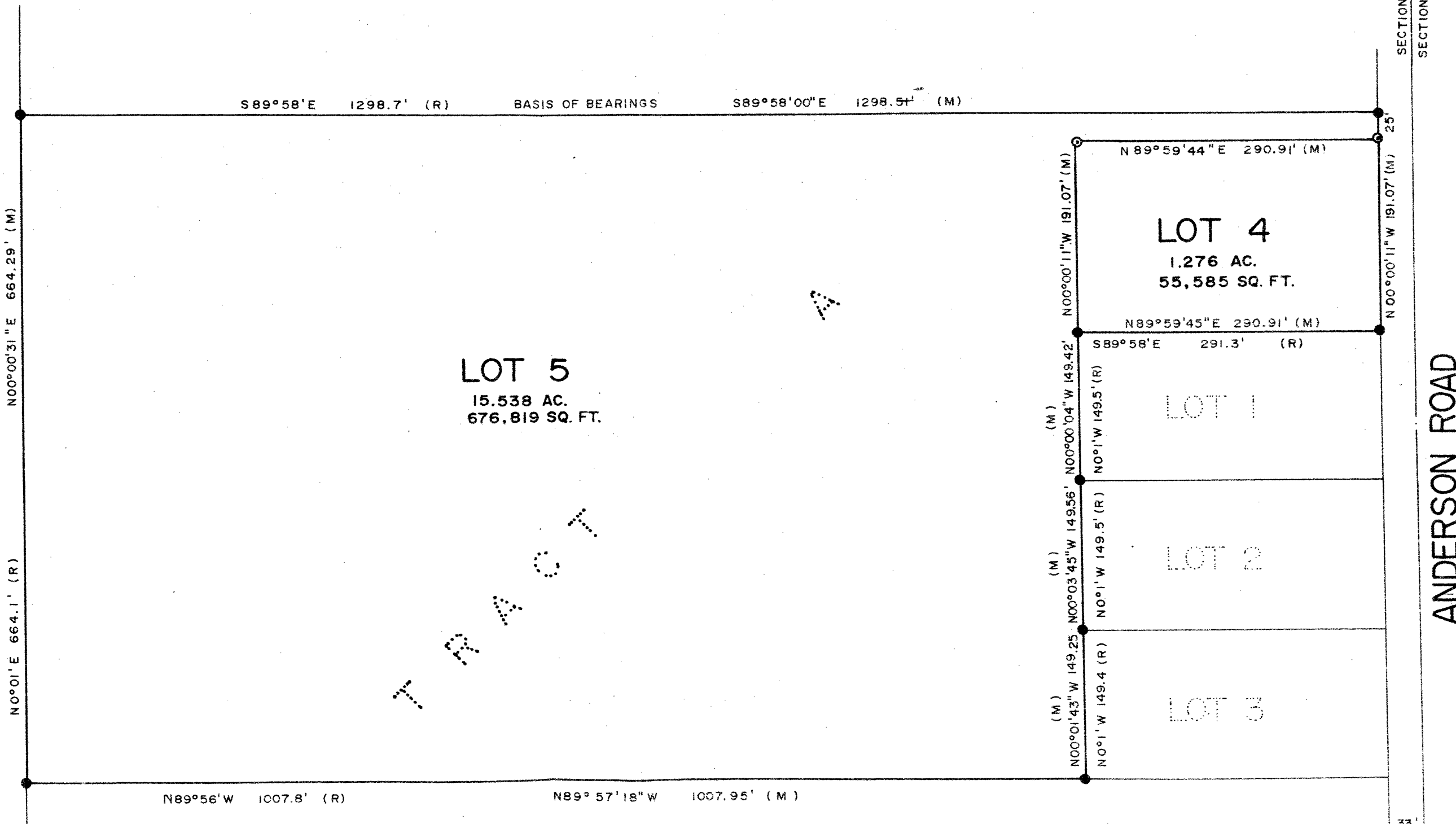


# PLAT OF LOTS 4 AND 5 OF TRACT A OF KNIGHT'S ACRES SUBDIVISION

FORMERLY ALL OF TRACT A OF KNIGHT'S ACRES SUBDIVISION LOCATED IN THE N1/2 SE1/4 NE1/4 OF SECTION 14, T1N, R8E, B.H.M., PENNINGTON COUNTY, SOUTH DAKOTA

All major drainage easements shown hereon shall be kept free of all obstructions including but not limited to buildings, walls, fences, hedges, trees and shrubs. These easements grant to all public authorities the right to construct, operate, maintain, inspect and repair such improvements and structures as it deems expedient to facilitate drainage from any source.

Utility and Minor Drainage Easements - 8' on the interior side of all side and rear lot lines.



SECTION 14  
SECTION 13

ANDERSON ROAD