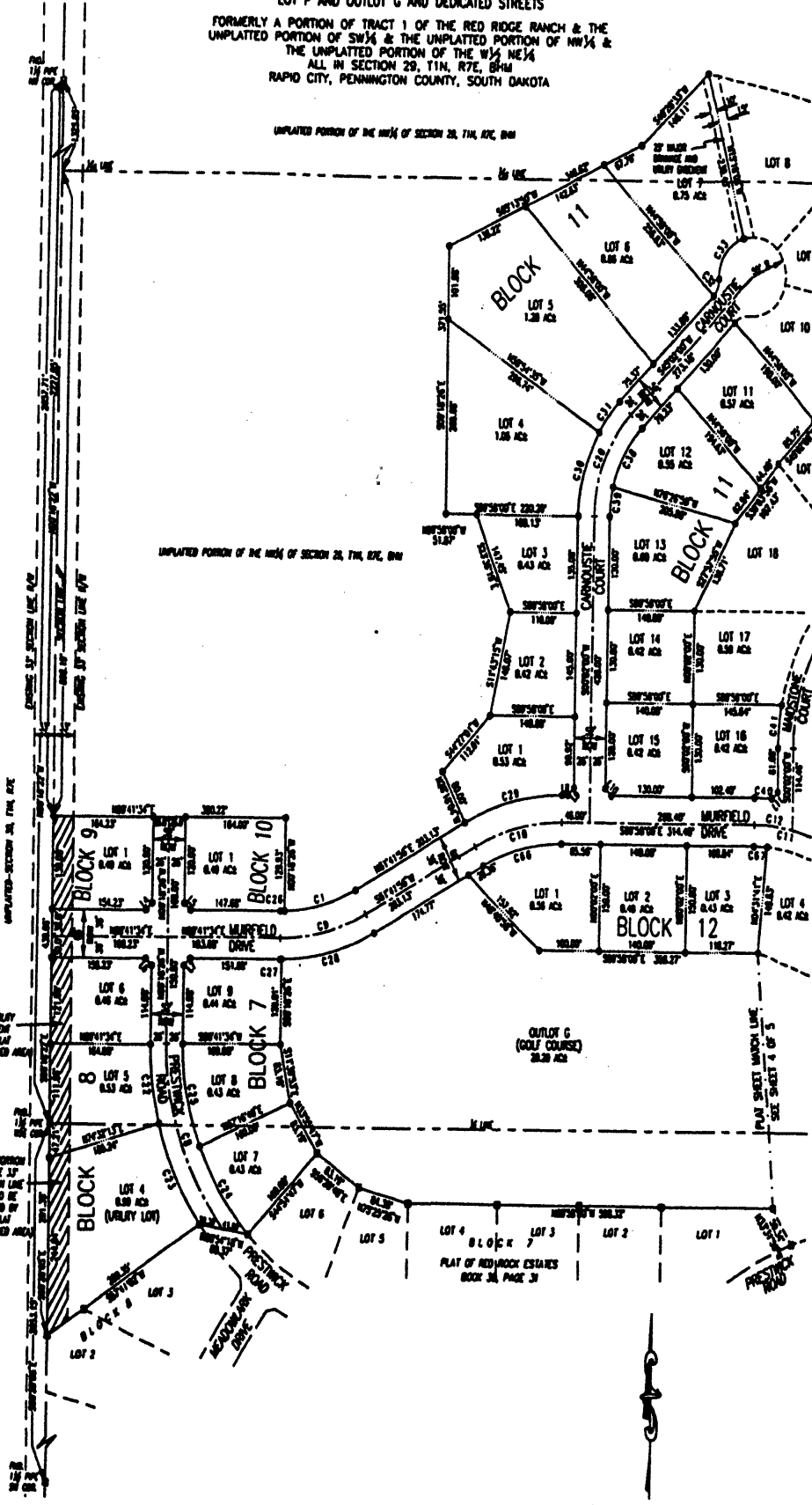


INCLUDING LOTS 7 THRU 9, BLOCK 7 AND LOTS 4 THRU 6, BLOCK 8 AND LOT 1, BLOCK 9 AND LOT 1, BLOCK 10 AND LOTS 1 THRU 38, BLOCK 11 AND LOTS 1 THRU 13, BLOCK 12 AND LOTS 1 THRU 5, BLOCK 13 AND LOTS 1 THRU 6, BLOCK 14 AND LOT P AND OUTLOT G AND DEDICATED STREETS

FORMERLY A PORTION OF TRACT 1 OF THE RED RIDGE RANCH & THE UNPLATTED PORTION OF SW 1/4 & THE UNPLATTED PORTION OF NW 1/4 & THE UNPLATTED PORTION OF THE W 1/4 NE 1/4 ALL IN SECTION 29, T1N, R7E, B9M RAPID CITY, PENNINGTON COUNTY, SOUTH DAKOTA

UNPLATTED PORTION OF THE NW 1/4 OF SECTION 29, T1N, R7E, B9M

UNPLATTED PORTION OF THE NW 1/4 OF SECTION 29, T1N, R7E, B9M

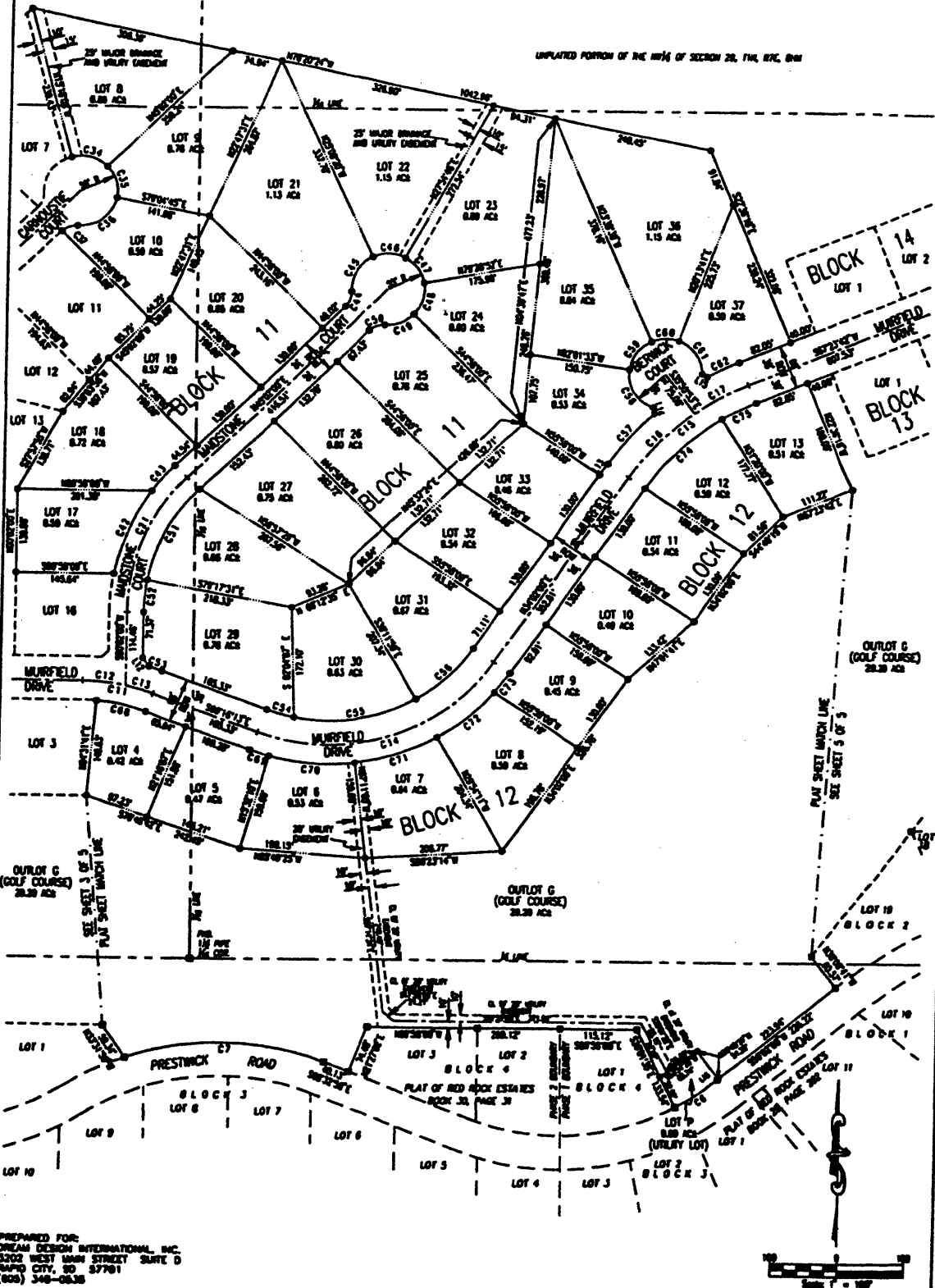


PLAT OF RED ROCK ESTATES

INCLUDING LOTS 7 THRU 9, BLOCK 7 AND LOTS 4 THRU 6,
 BLOCK 8 AND LOT 1, BLOCK 9 AND LOT 1, BLOCK 10 AND LOTS
 1 THRU 38, BLOCK 11 AND LOTS 1 THRU 13, BLOCK 12 AND
 LOTS 1 THRU 5, BLOCK 13 AND LOTS 1 THRU 6, BLOCK 14 AND
 LOT P AND OUTLOT G AND DEDICATED STREETS

FORMERLY A PORTION OF TRACT 1 OF THE RED RIDGE RANCH & THE
 UNPLATTED PORTION OF SW¹/₄ & THE UNPLATTED PORTION OF NW¹/₄ &
 THE UNPLATTED PORTION OF THE W¹/₄ NE¹/₄
 ALL IN SECTION 28, T1N, R7E, B5M
 RAPID CITY, PENNINGTON COUNTY, SOUTH DAKOTA

UNPLATTED PORTION OF THE NW¹/₄ OF SECTION 28, T1N, R7E, B5M



PREPARED FOR:
 DREAN DESIGN INTERNATIONAL, INC.
 8202 WEST MAIN STREET SUITE D
 RAPID CITY, SD 57701
 (605) 348-0838

PREPARED BY:
 ARLETH & ASSOCIATES
 382 MAIN STREET
 DEADWOOD, SD 57732
 605-578-1637

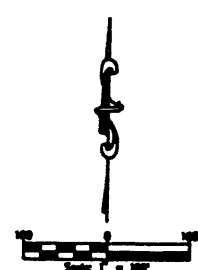
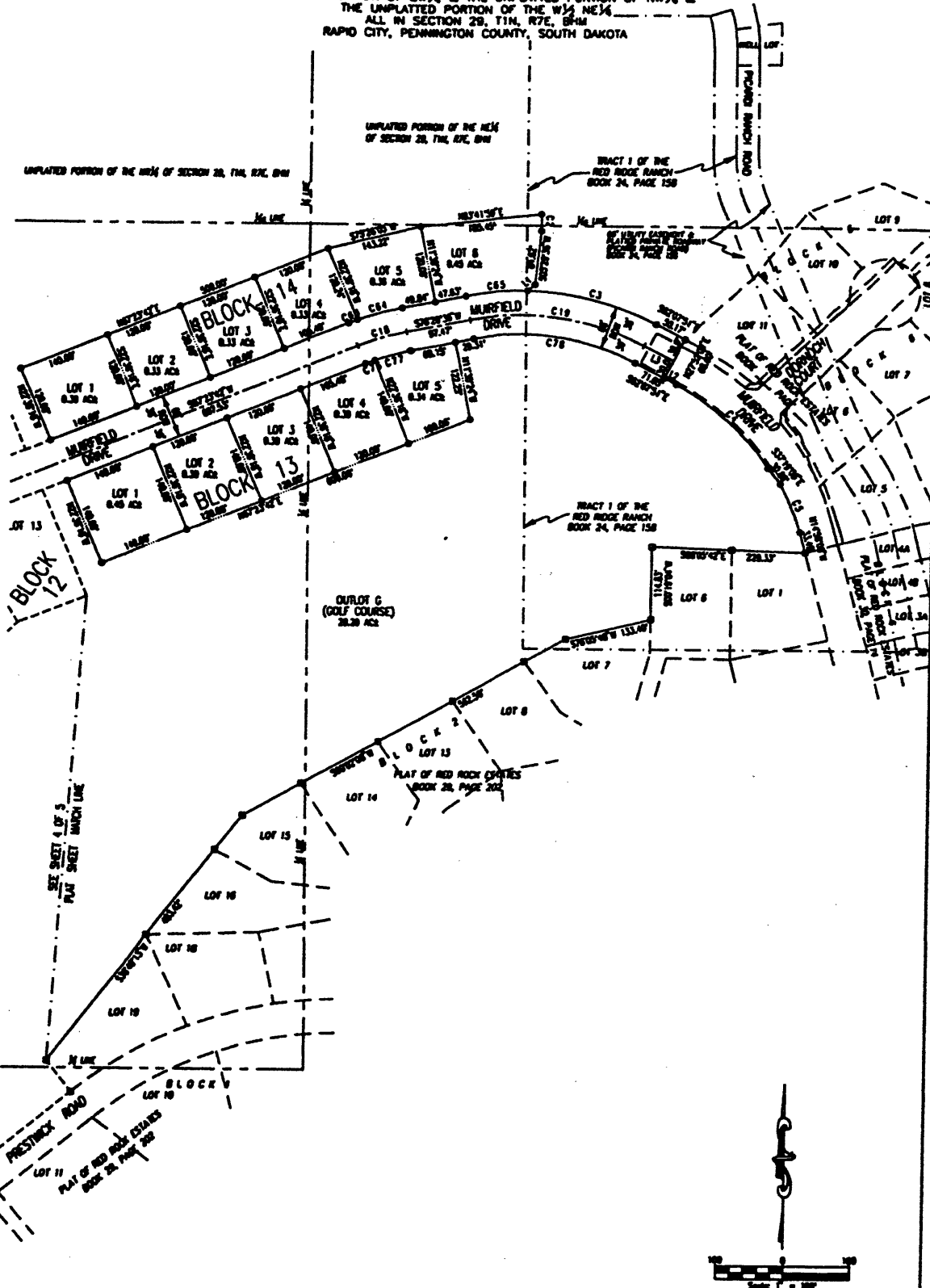
JOB NO. 88-0040.38
 DATE: 11/28/21
 SCALE: 1" = 100'

APPROVED: _____
 Scale 1" = 100'

PLAT OF RED ROCK ESTATES

INCLUDING LOTS 7 THRU 9, BLOCK 7 AND LOTS 4 THRU 6, BLOCK 8 AND LOT 1, BLOCK 9 AND LOT 1, BLOCK 10 AND LOTS 1 THRU 38, BLOCK 11 AND LOTS 1 THRU 13, BLOCK 12 AND LOTS 1 THRU 5, BLOCK 13 AND LOTS 1 THRU 6, BLOCK 14 AND LOT P AND OUTLOT G AND DEDICATED STREETS

FORMERLY A PORTION OF TRACT 1 OF THE RED RIDGE RANCH & THE UNPLATTED PORTION OF SW $\frac{1}{4}$ & THE UNPLATTED PORTION OF NW $\frac{1}{4}$ & THE UNPLATTED PORTION OF THE W $\frac{1}{2}$ NE $\frac{1}{4}$ ALL IN SECTION 28, T1N, R7E, B9M RAPID CITY, PENNINGTON COUNTY, SOUTH DAKOTA



PREPARED FOR:
DREAM DESIGN INTERNATIONAL, INC.
2302 WEST MAIN STREET SUITE 0
RAPID CITY, SD 57701
(605) 348-0838

PREPARED BY:
ARLETH & ASSOCIATES
368 MAIN STREET
DEADWOOD, SD 57732
605-678-1637

JOB NO. 08-0040.30
DATE: 11/28/21
SCALE: 1" = 100'

APPROVED: _____

INCLUDING LOTS 7 THRU 9, BLOCK 7
AND LOTS 4 THRU 6, BLOCK 8 AND LOT 1, BLOCK 9
AND LOT 1, BLOCK 10 AND LOTS 1 THRU 38, BLOCK 11 AND
LOTS 1 THRU 13, BLOCK 12 AND LOTS 1 THRU 5, BLOCK 13 AND
LOTS 1 THRU 6, BLOCK 14 AND LOT P AND
OUTLOT G AND DEDICATED STREETS

FORMERLY A PORTION OF TRACT 1 OF THE RED RIDGE RANCH & THE
UNPLATTED PORTION OF SW 1/4 & THE UNPLATTED PORTION OF NW 1/4 &
THE UNPLATTED PORTION OF THE W 1/2 NE 1/4
ALL IN SECTION 28, T1N, R7E, B1M
RAPID CITY, PENNINGTON COUNTY, SOUTH DAKOTA

LEGEND

- DENOTES SET 5/8" NDBAR WITH SURVEY CAP MARKED "RLS 3877"
 - DENOTES FOUND SURVEY MONUMENT
- BARS OF BEARING: PER PREVIOUSLY RECORDED PLAT(S).

NOTES:

1. MINOR DRAINAGE AND UTILITY EASEMENTS ARE HEREBY ESTABLISHED 6' WIDE ON THE INTERIOR SIDE OF ALL LOT LINES AND EXTERIOR OF RIGHT-OF-WAY. (EXCEPT WHERE MAJOR DRAINAGE EASEMENTS ARE LOCATED)
2. TOTAL PLATTED AREA: 78.59 ACRES; LOTS: 40.84 ACRES. PUBLIC RIGHT-OF-WAY: 8.55 ACRES. DEDICATED FOR PUBLIC USE BY THIS PLAT. OUTLOT G (GOLF COURSE): 28.20 ACRES. LOT P IS HEREBY DEDICATED AS "UTILITY LOT" FOR WATER BOOSTER PUMP STATION. LOT 4, BLOCK 8 IS HEREBY DEDICATED AS "UTILITY LOT" FOR WATER RESERVOIR SITE.
3. ANY MAJOR DRAINAGE EASEMENT SHOWN HEREON SHALL BE KEPT FREE OF ALL OBSTRUCTIONS INCLUDING BUT NOT LIMITED TO BUILDINGS, WALLS, FENCES, HEDGES, TREES, AND SHRUBS. THESE EASEMENTS GRANT TO ALL PUBLIC AUTHORITIES THE RIGHT TO CONSTRUCT, OPERATE, MAINTAIN, INSPECT AND REPAIR SUCH IMPROVEMENTS AND STRUCTURES AS IT DEEMS EXPEDIENT TO FACILITATE DRAINAGE FROM ANY SOURCE.
4. NON-ACCESS EASEMENTS ARE HEREBY ESTABLISHED ALONG THE FIRST FIFTY FEET OF CORNER LOTS OR AS INDICATED HEREON.
5. ALL BUILDERS SHALL MAINTAIN EXISTING DRAINAGE FACILITIES IN ACCORDANCE TO APPROVED CONSTRUCTION PLANS. (RAPID CITY ENR. DIV. REQUESTED NOTE)

SHORT COURSE TABLE

NUMBER	BEARING	DIRECTION
L1	N4.64°	S46°34'36"W
L2	20.80°	S89°03'17"E
L3	36.17°	S89°03'17"E
L4	N4.14°	S44°41'34"W
L5	N4.14°	S45°18'28"E
L6	N4.14°	S45°18'28"E
L7	N4.14°	S44°41'34"W
L8	N4.14°	S89°28'07"E
L9	N4.14°	S89°28'07"E
L10	N4.14°	S45°08'08"E
L11	N3.51°	S47°48'28"E
L12	N6.62°	S39°37'27"W
L13	28.89°	S34°48'07"E
L14	6.47°	S13°38'25"E
L15	6.47°	S59°49'31"E
L16	2.87°	N89°08'07"E

CURVE TABLE

NUMBER	BEARS	DELTA ANGLE	ARC LENGTH	TANGENT	CHORD BEARING	CHORD LENGTH
C1	282.03	29°30'29"	121.88	81.88	N02°08'07"E	128.89
C2	125.50	11°47'37"	25.83	12.86	S02°07'17"E	25.78
C3	438.00	26°53'36"	205.59	144.72	N02°16'39"E	283.71
C4	320.00	29°53'46"	183.08	88.78	S41°16'52"E	198.88
C5	324.00	12°13'13"	81.84	41.14	S21°14'30"E	81.78
C6	324.00	11°42'48"	76.46	38.28	S59°57'24"W	78.33
C7	426.00	40°30'33"	303.67	198.61	S08°38'14"E	297.38
C8	426.00	17°58'21"	112.89	56.87	S07°53'07"E	112.38
C9	426.00	20°52'05"	158.18	78.45	S25°53'07"E	154.38
C10	324.00	22°24'53"	148.31	74.16	S33°59'07"E	145.38
C11	324.00	22°24'53"	148.31	74.16	N17°38'53"W	145.38
C12	274.00	01°18'20"	6.32	3.16	S00°15'54"W	6.32
C13	330.00	00°24'11"	2.39	1.18	N00°28'28"E	2.39
C14	330.00	27°29'26"	158.81	81.83	N02°28'38"E	157.38
C15	330.00	28°30'04"	167.15	86.32	N02°51'58"E	165.45
C16	228.00	31°03'25"	122.50	62.80	S19°33'04"W	121.81
C17	228.00	17°58'25"	58.00	27.84	S38°04'04"W	54.88
C18	38.00	48°47'23"	23.58	13.81	S07°28'18"W	24.78
C19	56.00	78°27'13"	35.31	44.88	S35°28'14"W	68.58
C20	56.00	00°28'08"	57.82	51.87	N02°08'04"W	58.58
C21	56.00	39°53'15"	53.88	28.17	S17°04'23"E	51.58
C22	56.00	00°34'08"	78.58	48.58	S32°22'18"W	72.88
C23	56.00	48°47'23"	25.58	13.81	N08°28'04"E	24.78
C24	174.00	31°28'58"	85.81	48.88	S20°17'33"W	84.41
C25	174.00	12°11'02"	41.88	28.87	S08°47'31"W	48.88
C26	338.00	04°41'03"	27.83	13.88	S07°38'07"E	27.83
C27	338.00	10°40'13"	88.71	38.44	N00°22'07"E	88.87
C28	338.00	22°01'28"	142.57	72.44	N23°13'26"E	141.88
C29	338.00	08°18'21"	52.78	26.44	N09°23'40"E	52.78
C30	338.00	48°47'23"	23.58	13.81	S29°38'18"W	24.78
C31	338.00	00°37'05"	88.87	37.33	S39°33'08"W	82.88
C32	338.00	33°03'08"	58.83	27.45	N08°38'47"W	48.13
C33	338.00	31°28'58"	48.58	26.53	N08°08'11"W	47.88
C34	338.00	54°48'41"	52.81	28.13	S14°34'12"W	58.88
C35	338.00	38°03'51"	48.15	25.74	S08°48'28"W	48.83
C36	38.00	48°47'23"	23.58	13.81	S02°28'42"W	24.78
C37	274.00	34°18'31"	164.15	84.88	S27°38'14"W	161.71
C38	274.00	10°48'28"	51.88	25.88	S02°28'14"W	58.87
C39	338.00	03°13'28"	38.88	18.58	N01°08'53"W	38.88
C40	382.00	00°11'38"	42.88	21.45	S73°58'07"E	42.75
C41	382.00	41°34'18"	198.88	88.44	N02°38'07"E	188.88
C42	382.00	29°48'07"	117.83	58.33	N02°38'07"E	118.88
C43	438.00	13°41'48"	184.71	52.88	N02°38'07"E	184.48
C44	56.00	78°18'25"	25.84	44.88	S37°08'48"E	48.38
C45	56.00	58°22'54"	56.84	38.73	S37°08'54"W	53.88
C46	56.00	43°22'28"	42.11	22.15	N08°17'31"E	41.88
C47	56.00	00°18'28"	68.54	37.28	S39°38'07"E	61.33
C48	438.00	00°48'17"	52.15	28.18	N03°38'05"E	52.12
C49	438.00	00°53'28"	14.51	7.28	S08°28'48"W	14.51
C50	438.00	00°11'38"	78.33	38.74	N02°53'27"E	78.28
C51	438.00	12°28'25"	85.42	47.88	N04°48'05"E	85.23
C52	278.00	28°28'04"	133.52	68.18	N02°51'38"E	138.17
C53	278.00	04°28'41"	21.18	10.88	S07°43'07"E	21.18
C54	278.00	18°12'08"	78.38	38.43	S27°28'18"E	78.88
C55	330.00	00°11'38"	28.81	14.87	S77°28'04"E	28.88
C56	338.00	22°43'11"	138.88	68.38	S05°48'28"E	138.88
C57	338.00	19°27'17"	112.84	58.57	N02°22'17"E	111.52
C58	338.00	00°38'37"	38.87	18.88	S37°08'48"W	38.88
C59	378.00	24°38'08"	158.88	88.78	S47°11'08"W	157.88
C60	378.00	00°43'42"	38.38	18.24	N03°01'17"E	38.33
C61	378.00	00°19'38"	14.88	7.38	S08°17'18"W	14.88
C62	378.00	00°28'17"	57.87	28.58	N04°07'28"E	57.88
C63	378.00	37°22'28"	254.28	132.38	S01°08'07"E	248.38

PREPARED FOR:
HAM DESIGN INTERNATIONAL, INC.
2 WEST MAIN STREET SUITE 0
RAPID CITY, SD 57701
(605) 346-0838

PREPARED BY:
ARLETH &
ASSOCIATES

382 MAIN STREET
DEADWOOD, SD 57732
605-678-1637

JOB NO.
88-0048.30

DATE: 11/28/01
SCALE: 1" = 100'

APPROVED: