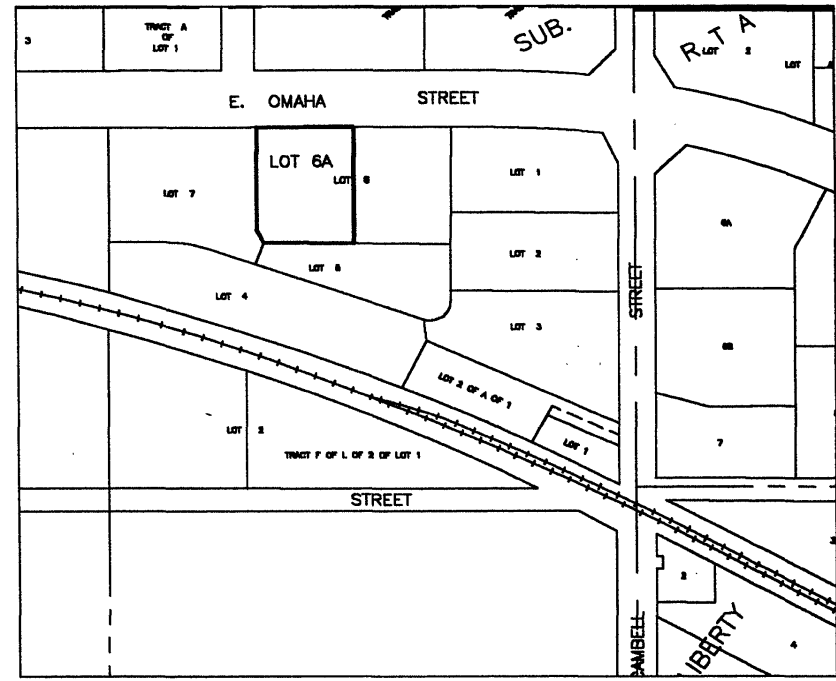
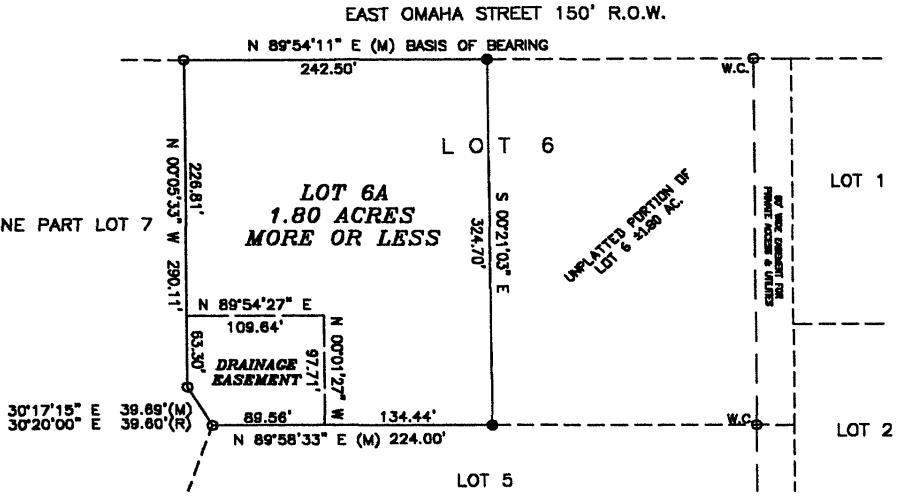


DEC 13 2001

Rapid City
Planning Department

PRELIMINARY PLAT OF LOT 6A
OF LOT 6 OF THE RICE VALLEY VIEW PROPERTIES ADDITION,
LOCATED IN SECTION 6, T1N, R8E, B.H.M., IN THE CITY OF RAPID
CITY, PENNINGTON COUNTY, SOUTH DAKOTA

POPULAR
AVENUE



DEVELOPER/OWNER:
DON RICE
310 CABELL
RAPID CITY, SD 57701

- LEGEND:**
- FOUND REBAR AND CAP STAMPED ARLETH AND ASSOCIATES LS 3977
 - SET REBAR AND CAP STAMPED ARLETH AND ASSOCIATES LS 3977

NOTES:
PROPERTY IS ZONED: GENERAL COMMERCIAL
BUILDING SETBACK REQUIREMENTS ARE AS STATED IN THE ZONING AND/OR PLATTING REGULATIONS.
UTILITY AND MINOR DRAINAGE EASEMENTS: 8' ON THE INTERIOR SIDES OF ALL LOT LINES.



DECEMBER 13, 2001

<p>PREPARED BY: ARLETH & ASSOCIATES 382 MAIN STREET DEADWOOD, SD 57732 605-678-1637</p>	<p>PROJECT: PREL. PLAT LOT 6A</p>	<p>DATE: DECEMBER 13, 2001 SCALE: NTS DRAWN BY: T. YIG APPROVED: JMA DWG: 0661.DWG</p>
	<p>JOB NO. 5661</p>	