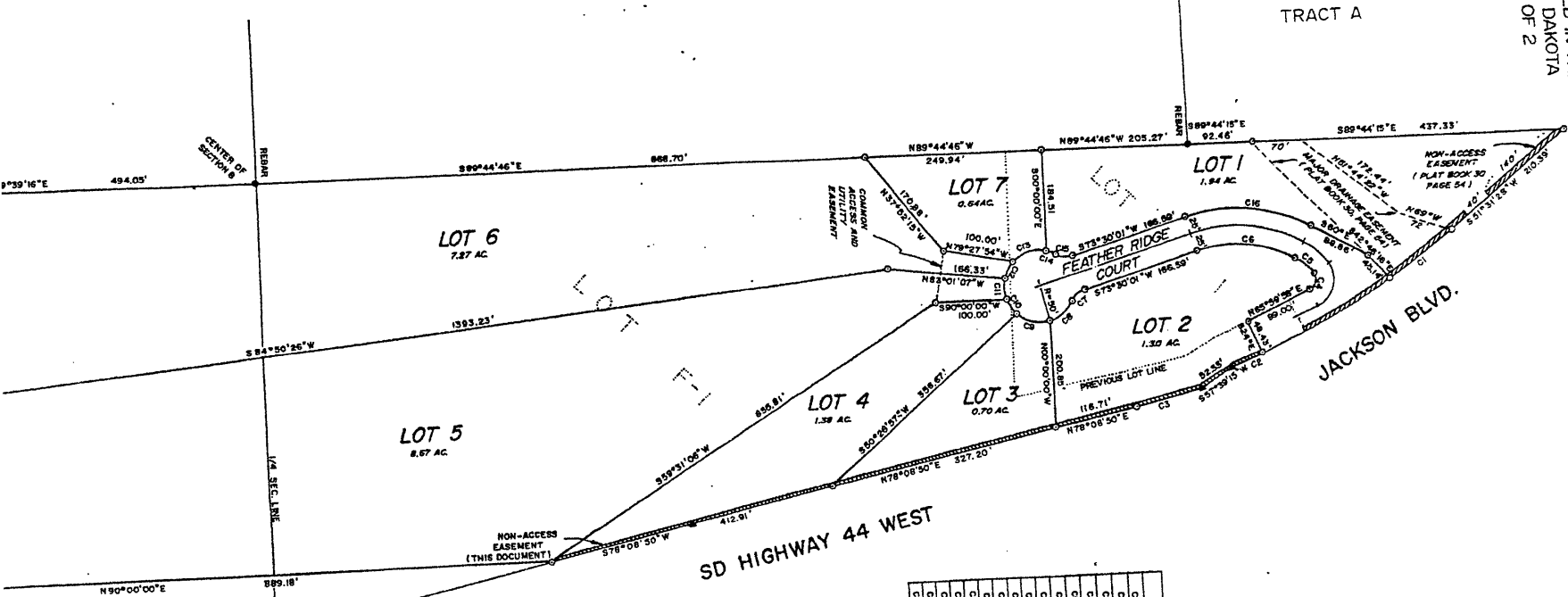


02SV001

PLAT OF LOTS 1 THROUGH 7 OF VISTA LAKE SUBDIVISION,
 FORMERLY ALL OF LOT 1 AND A PORTION OF LOT F-1 OF FISH HATCHERY SUBDIVISION,
 LOCATED IN THE NE1/4 SE1/4 AND N1/2 SE1/4 OF SECTION 8, T1N, R7E, BHM, RAPID CITY, PENNINGTON COUNTY,
 SOUTH DAKOTA
 PAGE 1 OF 2



CORNER	BEARING	DISTANCE	TYPE
C1	S 4° 47' 30" E	110.76'	IRON
C2	S 2° 51' 58" E	48.42'	IRON
C3	S 7° 52' 24" E	94.32'	IRON
C4	100° 00' 00" W	20.18'	IRON
C5	S 2° 20' 28" E	34.03'	IRON
C6	S 4° 30' 28" E	143.02'	IRON
C7	S 7° 52' 24" E	22.39'	IRON
C8	S 7° 52' 24" E	90.00'	IRON
C9	S 2° 20' 28" E	42.80'	IRON
C10	S 2° 20' 28" E	48.43'	IRON
C11	S 2° 51' 58" E	23.87'	IRON
C12	S 7° 52' 24" E	27.62'	IRON
C13	S 7° 52' 24" E	90.00'	IRON
C14	S 2° 51' 58" E	141.00'	IRON
C15	S 7° 52' 24" E	141.00'	IRON
C16	S 2° 51' 58" E	24.39'	IRON
C17	S 7° 52' 24" E	182.40'	IRON
C18	S 7° 52' 24" E	223.00'	IRON
C19	N 89° 44' 15" E	110.72'	IRON
C20	N 89° 44' 15" E	48.42'	IRON
C21	N 89° 44' 15" E	94.28'	IRON
C22	N 89° 44' 15" E	22.80'	IRON
C23	N 89° 44' 15" E	23.72'	IRON
C24	N 89° 44' 15" E	41.96'	IRON
C25	N 89° 44' 15" E	48.43'	IRON
C26	N 89° 44' 15" E	90.00'	IRON
C27	N 89° 44' 15" E	90.00'	IRON
C28	N 89° 44' 15" E	90.00'	IRON
C29	N 89° 44' 15" E	90.00'	IRON
C30	N 89° 44' 15" E	90.00'	IRON
C31	N 89° 44' 15" E	90.00'	IRON
C32	N 89° 44' 15" E	90.00'	IRON
C33	N 89° 44' 15" E	90.00'	IRON
C34	N 89° 44' 15" E	90.00'	IRON
C35	N 89° 44' 15" E	90.00'	IRON
C36	N 89° 44' 15" E	90.00'	IRON
C37	N 89° 44' 15" E	90.00'	IRON
C38	N 89° 44' 15" E	90.00'	IRON
C39	N 89° 44' 15" E	90.00'	IRON
C40	N 89° 44' 15" E	90.00'	IRON
C41	N 89° 44' 15" E	90.00'	IRON
C42	N 89° 44' 15" E	90.00'	IRON
C43	N 89° 44' 15" E	90.00'	IRON
C44	N 89° 44' 15" E	90.00'	IRON
C45	N 89° 44' 15" E	90.00'	IRON
C46	N 89° 44' 15" E	90.00'	IRON
C47	N 89° 44' 15" E	90.00'	IRON
C48	N 89° 44' 15" E	90.00'	IRON
C49	N 89° 44' 15" E	90.00'	IRON
C50	N 89° 44' 15" E	90.00'	IRON



• - Found Monument A
 A - Round Highway RC
 Harled
 O - Bahar With SUW
 Cap Harled "RM 1
 650"
 REVISED 12-12-01

PREPARED BY:
 Park Land Surveying & Consulting Engineers,
 P.O. Box 8156
 Rapid City, SD 57709
 (605) 346-3581
 October 12, 2001
 Project No: 01-01-02

Utility and Honor Drainage Easements
 8' on the outer side of all side
 and rear lot lines.

All major drainage easements shown in
 this plat have been surveyed and shown
 free of all obstruction
 including but not limited to building
 encumbrances, hedges, trees and other
 easements grant to all persons and
 easements grant to all persons, and
 the right to construct such improvements
 and to use the same as it deems expedient to
 facilitate drainage from any source.

LOT 13 REVISED
 CLEGHORN
 CANYON
 NO. 2