

# SUPPLEMENTARY PLAT RIDGE PARK NO 4

1"=100'

SHOWING

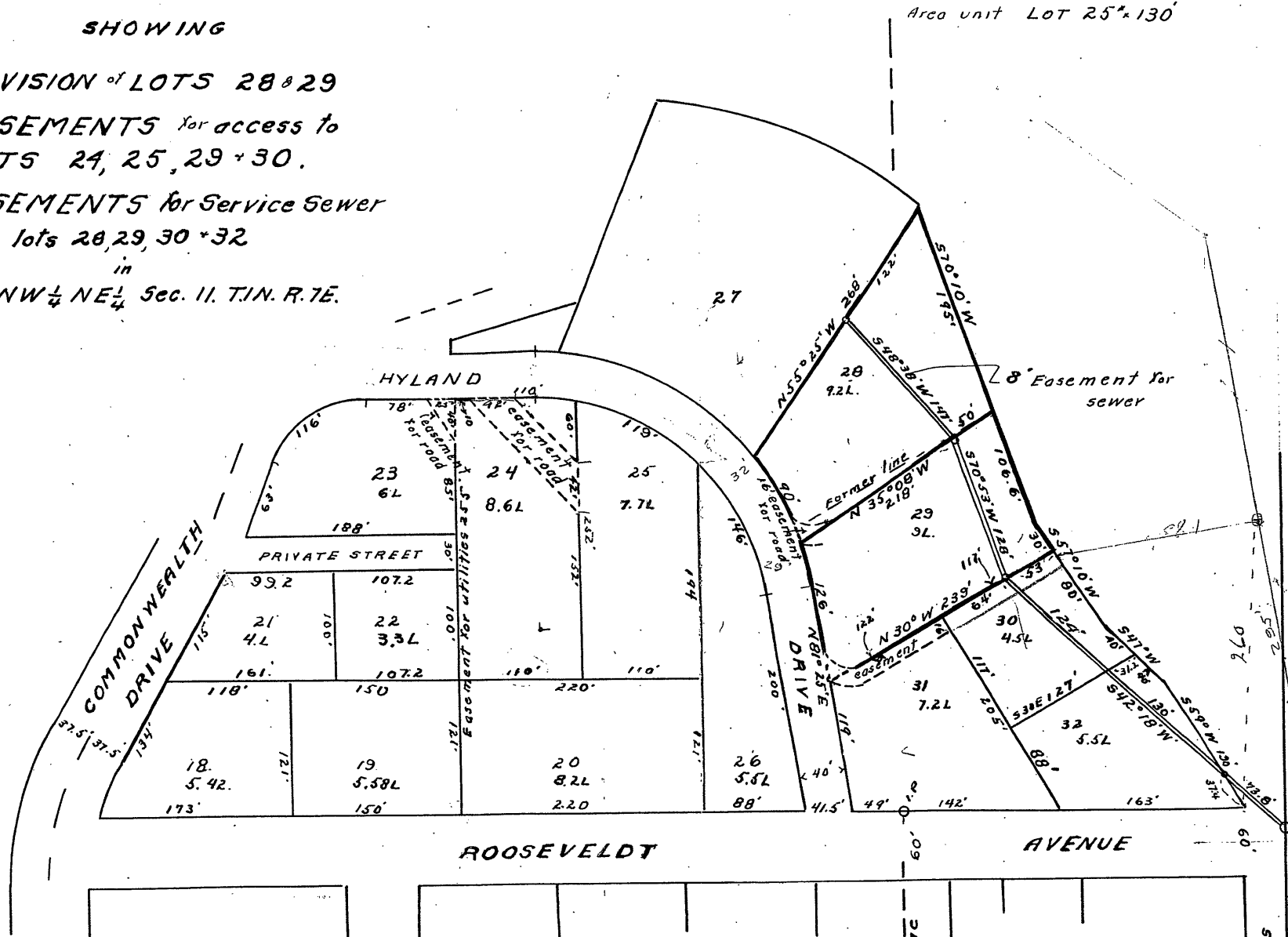
REVISION of LOTS 28 & 29

EASEMENTS for access to  
LOTS 24, 25, 29 & 30.

EASEMENTS for Service Sewer  
over lots 28, 29, 30 & 32

in  
NW 1/4 NE 1/4 Sec. 11. T.1N. R.7E.

02PL004



STATE of SOUTH DAKOTA  
COUNTY of PENNINGTON ss.

We, Otto Kepp + Ruth Kepp do  
hereby certify that we are the owners of Lots

On the day of 1952, before me  
a notary public personally appeared

ST. PATRICK  
Sec. Line