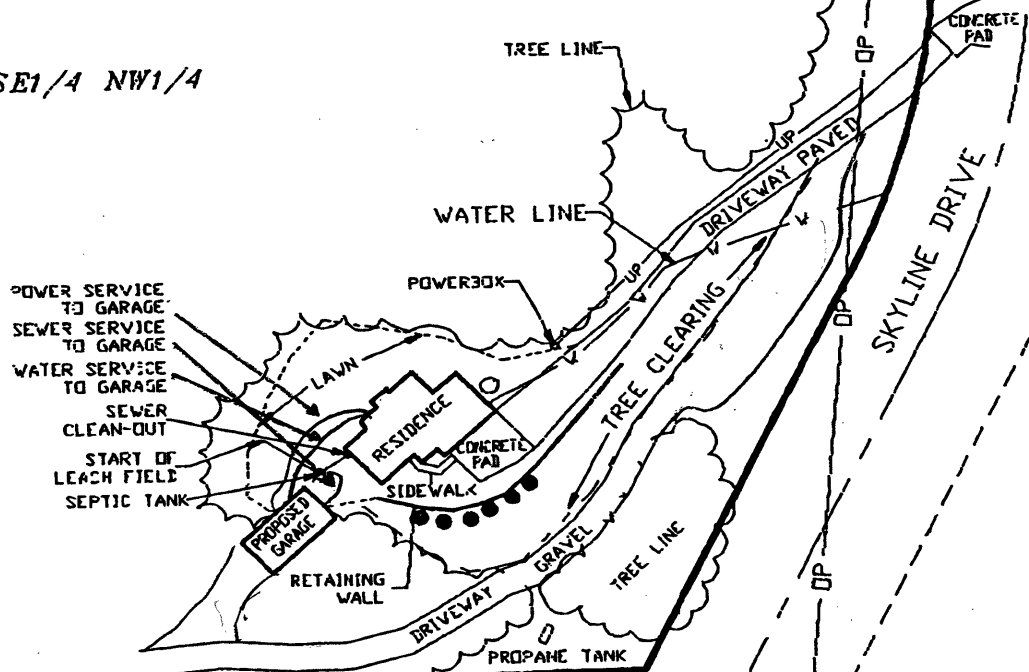


SITE PLAN
THE UNPLATTED PART OF THE NW1/4 OF THE SE1/4 OF
THE NW1/4 OF SECTION 14, T1N, R7E, B.H.M., CITY OF
RAPID CITY, PENNINGTON COUNTY, SOUTH DAKOTA

NW1/4 SE1/4 NW1/4



- 3' DIA. SPRUCE TREE
- 12' DIA. PINE TREE
- OP— OVERHEAD POWERLINE
- JP— UNDERGROUND POWERLINE
- W— WATERLINE



1" = 100'



OCTOBER 12, 2001

| | | | |
|--|--|---|---|
| | <p>PREPARED BY: ARLETH & ASSOCIATES 382 MAIN STREET DEADWOOD, SD 57732 605-578-1637</p> | <p>PROJECT: SITE PLAN FOR DAN TACKETT</p> | <p>DATE: OCT. 12, 2001 SCALE: 1" = 100' DRAWN BY: T. VIG JOB NO: 5586</p> |
|--|--|---|---|