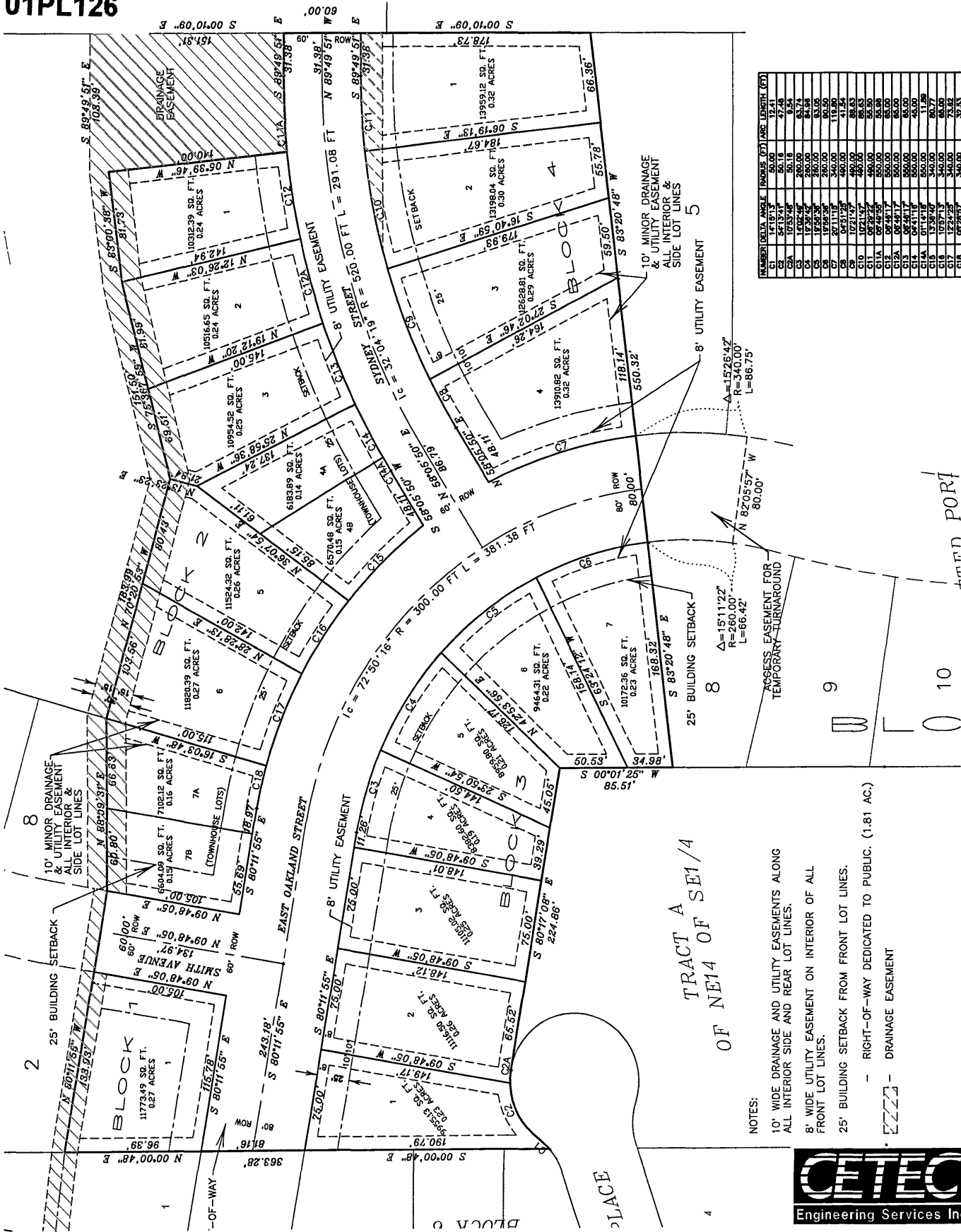


PRELIMINARY PLAT OF
LOT 1 OF BLOCK 1; LOTS 1 THRU 7 OF BLOCK 2;
LOT 1 THRU 7 OF BLOCK 3;
AND LOTS 1 THRU 4 OF BLOCK 4; CONTAINING 6.80 ACRES
OF
PARK MEADOWS SUBDIVISION
LOCATED IN THE NE1/4 OF SE1/4 SECTION 7, T1N, R8E, B.H.M.
RAPID CITY, PENNINGTON COUNTY, SOUTH DAKOTA



01PL126



NUMBER	BEARING	LENGTH (FT)	AREA (SQ FT)
C1	S 89°49'57" E	60.00	47.44
C2	S 89°49'57" E	37.38	9.84
C3	S 89°49'57" E	31.73	8.34
C4	S 89°49'57" E	27.00	6.84
C5	S 89°49'57" E	22.27	5.34
C6	S 89°49'57" E	17.54	3.84
C7	S 89°49'57" E	12.81	2.34
C8	S 89°49'57" E	8.08	0.84
C9	S 89°49'57" E	3.35	0.34
C10	S 89°49'57" E	0.00	0.00
C11	S 89°49'57" E	0.00	0.00
C12	S 89°49'57" E	0.00	0.00
C13	S 89°49'57" E	0.00	0.00
C14	S 89°49'57" E	0.00	0.00
C15	S 89°49'57" E	0.00	0.00
C16	S 89°49'57" E	0.00	0.00
C17	S 89°49'57" E	0.00	0.00
C18	S 89°49'57" E	0.00	0.00

- NOTES:
- 10' WIDE DRAINAGE AND UTILITY EASEMENTS ALONG ALL INTERIOR SIDE AND REAR LOT LINES.
 - 8' WIDE UTILITY EASEMENT ON INTERIOR OF ALL FRONT LOT LINES.
 - 25' BUILDING SETBACK FROM FRONT LOT LINES.
 - RIGHT-OF-WAY DEDICATED TO PUBLIC. (1.81 AC.)
 - DRAINAGE EASEMENT



November 01, 2024, 11:45:25 AM
 Drawing: L:\01\PL126\01\14\02\PL126-01.DWG