

LOTS 1 to 17, inclusive, BLOCK 1 of NE 1/4 Sec. 7  
including a portion of LOT 5, Nichol's  
also

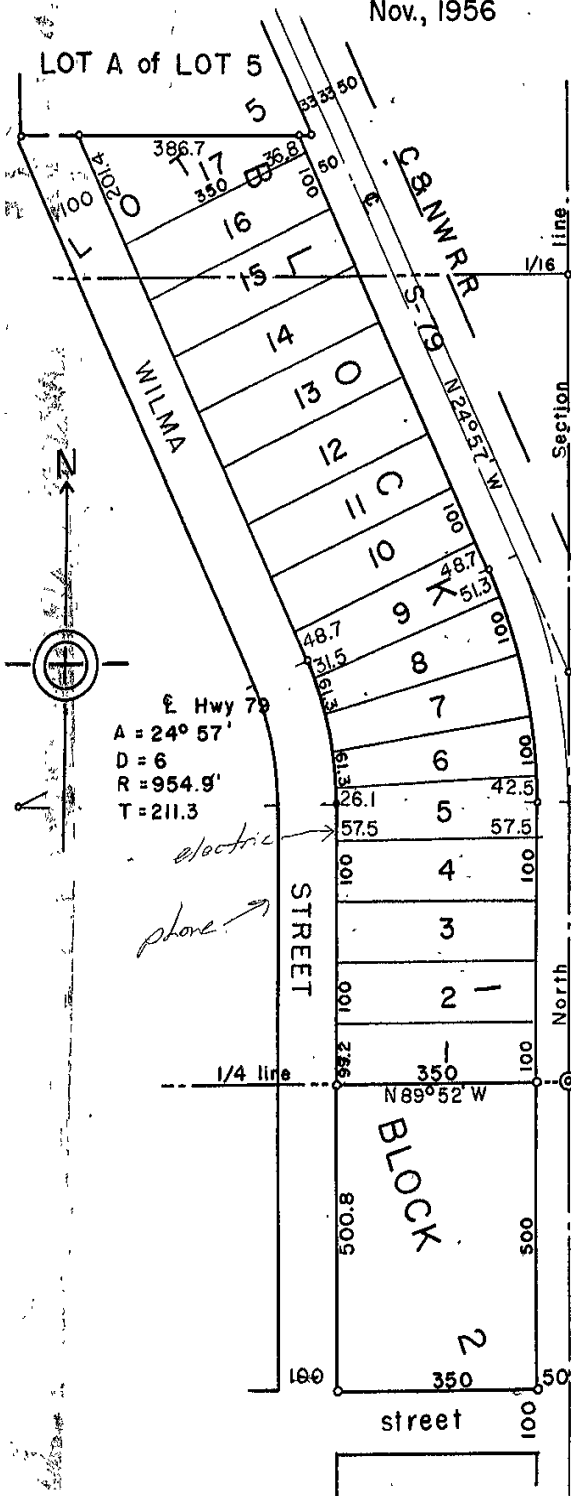
01VR005

BLOCK 2, NE of SE Sec. 7

Nov., 1956

Rapid City, S. D.

Scale 1"=200'



STATE of SOUTH DAKOTA ss  
COUNTY of PENNINGTON

We, Charles J Bradsky and Wilma Bradsky, do hereby certify that we are the owners of LOT 5 (except LOT A) of NE 1/4 SUBDIVISION, the SE 1/4 of NE 1/4 and NE 1/4 of SE 1/4, T1N R2E BHM, that we authorized the survey and plat as hereon and do hereby dedicate to the public for use as the streets as shown.

Charles J Bradsky ow  
Wilma Bradsky ow

I, Claude E Bangs, a registered land surveyor, do hereby certify that, being so authorized, I made a survey and plat of BLOCKS 1 & 2 as shown hereon and that same is correct.

Claude E Bangs sur

On the 30th day of November, 1956 before me, notary public personally appeared Charles J Bradsky, Wilma Bradsky and Claude E Bangs, known to me to be the persons described in the foregoing instruments and acknowledged to me that they signed the same.

Dorothy M. Hall not  
My commission expires October

Approved by resolution of the Board of City Commissioners on the 3rd day of December, 1956

R.R. Lang and

Note: Building setback is 53 ft. from E Hwy 79

APPROVED BY THE CITY PLANNING COMMISSION  
by [Signature]  
Planning Engineer  
DATE Nov 20 1956

I, TREASURER OF CITY OF RAPID CITY, S. DAK., DO HEREBY CERTIFY THAT ALL SPECIAL ASSESSMENTS UPON THE WITHIN DESCRIBED LANDS ARE FULLY PAID ACCORDING TO THE RECORDS OF MY OFFICE.

DATED THIS 30th DAY OF Nov. 1956

[Signature]  
TREASURER  
CITY OF RAPID CITY, S. D.