

PLAT OF PLUM CREEK SUBDIVISION

LOTS 8 THRU 27 OF BLOCK 3 AND LOTS 1 THRU 13 OF BLOCK 2; TRACT 1; AND R.O.W. OF SAND CHERRY LANE, WINEBERRY LANE, GRAPEVINE LANE, AND ROSEWOOD LANE, AND TEMPORARY TURNAROUND EASEMENT LOCATED IN THE NORTH 1/4 OF THE SW 1/4 OF SECTION 16, T94, R9E, B.J.M. PENNINGTON COUNTY, SOUTH DAKOTA

SHEET 1 OF 2

ORDER	DELTA ANGLE	NORTH	ARC LENGTH
C0	30°00'10"	777.71	100.30
C0	30°00'10"	777.71	100.30
C01	30°00'10"	777.71	100.30
C02	30°00'10"	777.71	100.30
C03	30°00'10"	777.71	100.30
C04	30°00'10"	777.71	100.30
C05	30°00'10"	777.71	100.30
C06	30°00'10"	777.71	100.30
C07	30°00'10"	777.71	100.30
C08	30°00'10"	777.71	100.30
C09	30°00'10"	777.71	100.30
C10	30°00'10"	777.71	100.30
C11	30°00'10"	777.71	100.30
C12	30°00'10"	777.71	100.30
C13	30°00'10"	777.71	100.30
C14	30°00'10"	777.71	100.30
C15	30°00'10"	777.71	100.30
C16	30°00'10"	777.71	100.30
C17	30°00'10"	777.71	100.30
C18	30°00'10"	777.71	100.30
C19	30°00'10"	777.71	100.30
C20	30°00'10"	777.71	100.30
C21	30°00'10"	777.71	100.30
C22	30°00'10"	777.71	100.30
C23	30°00'10"	777.71	100.30
C24	30°00'10"	777.71	100.30
C25	30°00'10"	777.71	100.30
C26	30°00'10"	777.71	100.30
C27	30°00'10"	777.71	100.30
C28	30°00'10"	777.71	100.30
C29	30°00'10"	777.71	100.30
C30	30°00'10"	777.71	100.30
C31	30°00'10"	777.71	100.30
C32	30°00'10"	777.71	100.30
C33	30°00'10"	777.71	100.30
C34	30°00'10"	777.71	100.30
C35	30°00'10"	777.71	100.30
C36	30°00'10"	777.71	100.30
C37	30°00'10"	777.71	100.30
C38	30°00'10"	777.71	100.30
C39	30°00'10"	777.71	100.30
C40	30°00'10"	777.71	100.30
C41	30°00'10"	777.71	100.30
C42	30°00'10"	777.71	100.30
C43	30°00'10"	777.71	100.30
C44	30°00'10"	777.71	100.30
C45	30°00'10"	777.71	100.30
C46	30°00'10"	777.71	100.30
C47	30°00'10"	777.71	100.30
C48	30°00'10"	777.71	100.30
C49	30°00'10"	777.71	100.30
C50	30°00'10"	777.71	100.30
C51	30°00'10"	777.71	100.30
C52	30°00'10"	777.71	100.30
C53	30°00'10"	777.71	100.30
C54	30°00'10"	777.71	100.30
C55	30°00'10"	777.71	100.30
C56	30°00'10"	777.71	100.30
C57	30°00'10"	777.71	100.30
C58	30°00'10"	777.71	100.30
C59	30°00'10"	777.71	100.30
C60	30°00'10"	777.71	100.30
C61	30°00'10"	777.71	100.30
C62	30°00'10"	777.71	100.30
C63	30°00'10"	777.71	100.30
C64	30°00'10"	777.71	100.30
C65	30°00'10"	777.71	100.30
C66	30°00'10"	777.71	100.30
C67	30°00'10"	777.71	100.30
C68	30°00'10"	777.71	100.30
C69	30°00'10"	777.71	100.30
C70	30°00'10"	777.71	100.30
C71	30°00'10"	777.71	100.30
C72	30°00'10"	777.71	100.30
C73	30°00'10"	777.71	100.30
C74	30°00'10"	777.71	100.30
C75	30°00'10"	777.71	100.30
C76	30°00'10"	777.71	100.30
C77	30°00'10"	777.71	100.30
C78	30°00'10"	777.71	100.30
C79	30°00'10"	777.71	100.30
C80	30°00'10"	777.71	100.30
C81	30°00'10"	777.71	100.30
C82	30°00'10"	777.71	100.30
C83	30°00'10"	777.71	100.30
C84	30°00'10"	777.71	100.30
C85	30°00'10"	777.71	100.30
C86	30°00'10"	777.71	100.30
C87	30°00'10"	777.71	100.30
C88	30°00'10"	777.71	100.30
C89	30°00'10"	777.71	100.30
C90	30°00'10"	777.71	100.30
C91	30°00'10"	777.71	100.30
C92	30°00'10"	777.71	100.30
C93	30°00'10"	777.71	100.30
C94	30°00'10"	777.71	100.30
C95	30°00'10"	777.71	100.30
C96	30°00'10"	777.71	100.30
C97	30°00'10"	777.71	100.30
C98	30°00'10"	777.71	100.30
C99	30°00'10"	777.71	100.30
C100	30°00'10"	777.71	100.30

NAME	ACRES +/-
SAND CHERRY LANE	0.32
WINEBERRY LANE	0.41
GRAPEVINE LANE	0.24
ROSEWOOD LANE	0.26
TOTAL	1.23

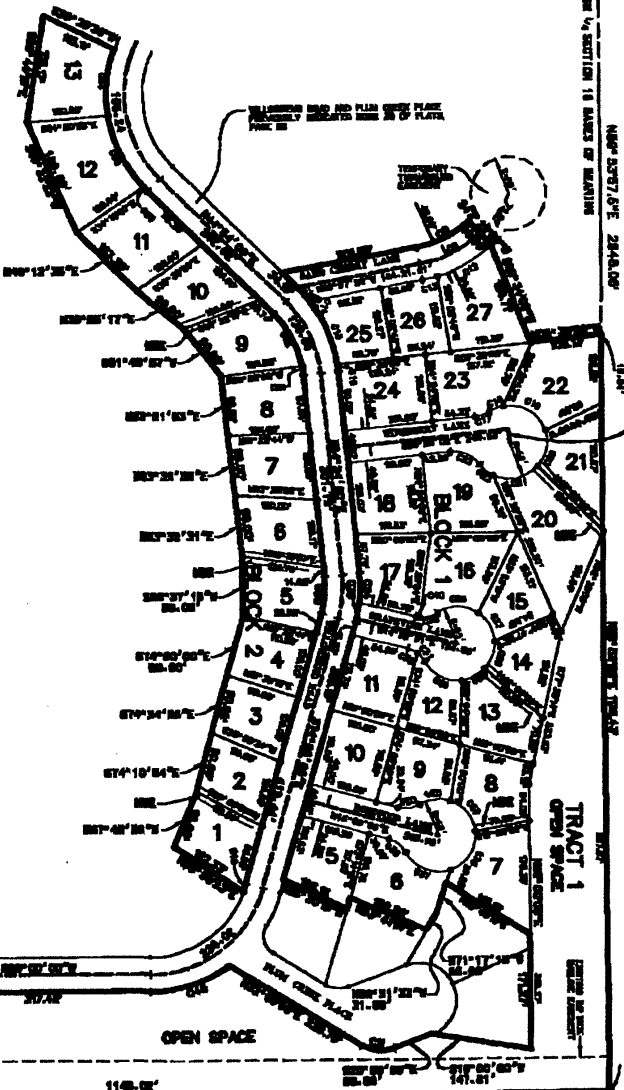
SAND CHERRY LANE, WINEBERRY LANE, GRAPEVINE LANE, AND ROSEWOOD LANE TO BE CONSIDERED AS PUBLIC HIGHWAYS BY THE PLAT - SEE AREA

SECTION 16
 EAST PLUMBING CO.
 1515 15TH AVE.
 S.D. 57001

NORTH LINE SW 1/4 SECTION 16 BARS BY MEASUREMENT

NAD 83 2007 G.P.C. 2844.00'

TRACT 1
 OPEN SPACE



BLOCK 1

LOT	ACRES +/-	LOT	ACRES +/-
1	0.30	17	0.30
2	0.30	18	0.30
3	0.30	19	0.30
4	0.30	20	0.41
5	0.34	21	0.30
6	0.30	22	0.30
7	0.37	23	0.30
8	0.18	24	0.30
9	0.37	25	0.37
10	0.30	26	0.31
11	0.30	27	0.31
12	0.30		
13	0.30		
14	0.30		
15	0.30		

BLOCK 2

LOT	ACRES +/-	LOT	ACRES +/-
1	0.30	1	0.30
2	0.31	2	0.30
3	0.31	3	0.30
4	0.34	4	0.30
5	0.30	5	0.30
6	0.30	6	0.30
7	0.30	7	0.30

TRACT 1 OPEN SPACE

NAME	ACRES +/-
TRACT 1 OPEN SPACE	4.08

POINT 16, SECTION 16
 FOUND BY SURVEY
 EAST LINE SW 1/4 SECTION 16 S00°00'00"W 2844.72'

SEE MAJOR DRAINAGE AND UTILITY EASEMENTS W/IN 5' ON EACH SIDE OF PROPERTY LINE

1) Any other drainage easement shall be located to the west of all streets and easements. These easements shall be shown on the plat. The plat shall be recorded in the public records of the county and shall be subject to the provisions of the plat. Changes from any other.

2) If utility easements are shown on the plat, they shall be shown on the plat.

Not prepared by
 State of South Dakota
 Pennington County, South Dakota
 Phone: 605 342-0478



• FOUND SURVEY
 • SET UP BY NO. 8 PERMIT
 • 1515 15TH AVE. "ALICE PHILLIPS
 L.S. 604"

STATE OF SOUTH DAKOTA
 County of Pennington
 Recorder of Deeds

File No. _____
 S.D. No. _____
 Date of Recording _____
 Page _____