

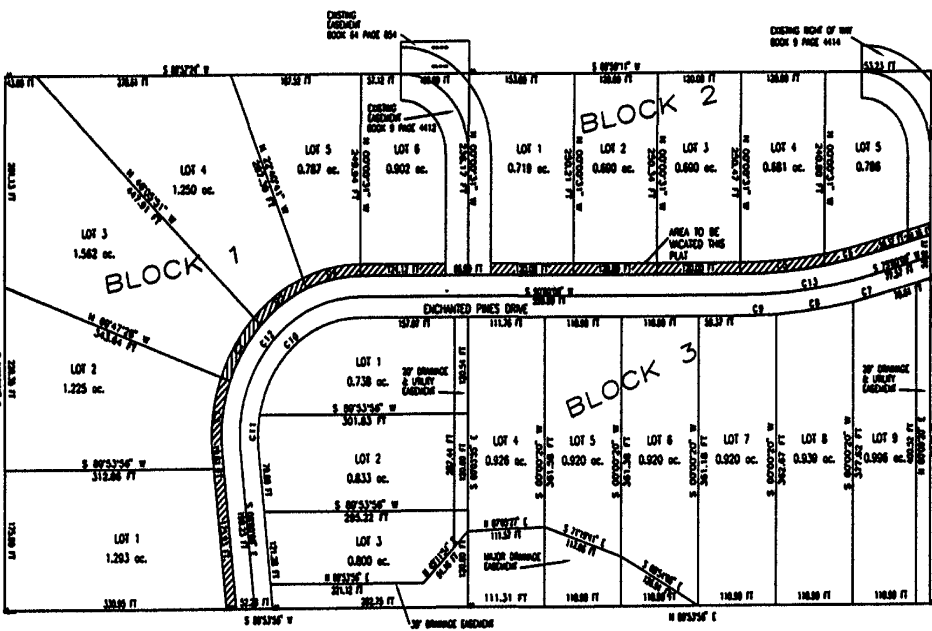
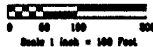
**PLAT OF ENCHANTED PINES SUBDIVISION**  
**LOTS 1-6, BLOCK 1; LOTS 1-5, BLOCK 2;**  
**LOTS 1-9, BLOCK 3**

LOCATED IN THE SW 1/4 OF THE NW 1/4 NW 1/4  
 OF SECTION 23, T1N, R7E, B4M; PENNINGTON COUNTY, SOUTH DAKOTA

**NOTES:**

- Denotes set 5/8" rebar with survey cap marked "ARLETH 3077".
- Denotes Found Survey Monument w/cap as noted.

**01PL103**



**NOTES:**

1. MINOR EASEMENT AND UTILITY EASEMENTS ARE HEREBY ESTABLISHED BY SIDE ON THE OUTSIDE SIDE OF ALL LOT LINES AND FRONT-OF-WAY. (EXCEPT THOSE MAJOR EASEMENT EASEMENTS ARE LOCATED)
2. ROAD PLATED WITH 20.00 ACRES; LOTS 1-9, 10-17, 18-27 ACRES DESIGNATED PUBLIC RIGHT-OF-WAY 15.00 ACRES.
3. ANY MAJOR EASEMENT OR EASEMENTS SHOWN HEREON SHALL BE HEFTY FREE OF ALL OBSTRUCTIONS INCLUDING BUT NOT LIMITED TO BUILDING WALLS, FENCES, HEDGES, TREES, AND SHRUBS. SUCH EASEMENTS GRANT TO ALL PUBLIC AUTHORITIES THE RIGHT TO CONDUCT, OPERATE, MAINTAIN, INSPECT AND REPAIR SUCH UTILITIES AND STRUCTURES AS IT DEEMS EXISTENT TO FULFILL DUTIES FROM ANY SERVICE.
4. NON-ACCESS EASEMENTS ARE HEREBY ESTABLISHED ALONG THE FIRST FIFTY FEET OF CORNER LOTS AS INDICATED HEREON.
5. ALL BUILDING SHALL OBSERVE EXISTING EASEMENT LOCATIONS IN ACCORDANCE TO APPROVED CONSTRUCTION PLANS. (RAMP CITY CH. 60A, REDUCED RATE)

NUMBER	DELTA ANGLE	CHORD DIRECTION	TANGENT	RADIUS	ARC LENGTH	CHORD LENGTH
C1	281°12'35"	S 07°08'10" E	46.34	198.08	91.07	80.27
C2	224°11'38"	N 32°03'51" E	41.76	198.08	82.33	81.74
C3	222°29'10"	N 33°36'44" E	41.26	198.08	81.37	80.81
C4	22°49'41"	N 78°30'30" E	36.82	198.08	78.80	78.28
C5	08°18'30"	N 85°19'41" E	36.40	740.50	120.53	120.40
C6	02°30'56"	N 77°49'58" E	36.44	740.50	73.23	73.20
C7	02°10'28"	N 76°39'13" E	21.86	782.50	43.97	43.80
C8	08°08'54"	S 82°13'23" W	56.11	782.50	112.02	111.93
C9	03°43'40"	S 88°08'10" W	28.79	782.50	51.57	51.56
C10	78°49'40"	S 50°55'10" W	123.04	147.00	204.92	188.74
C11	16°10'28"	S 02°09'10" W	20.80	147.00	41.53	41.38
C12	88°08'08"	N 47°00'00" E	182.22	173.00	280.00	237.25
C13	150°00'00"	N 82°30'00" E	100.92	764.50	200.89	200.12