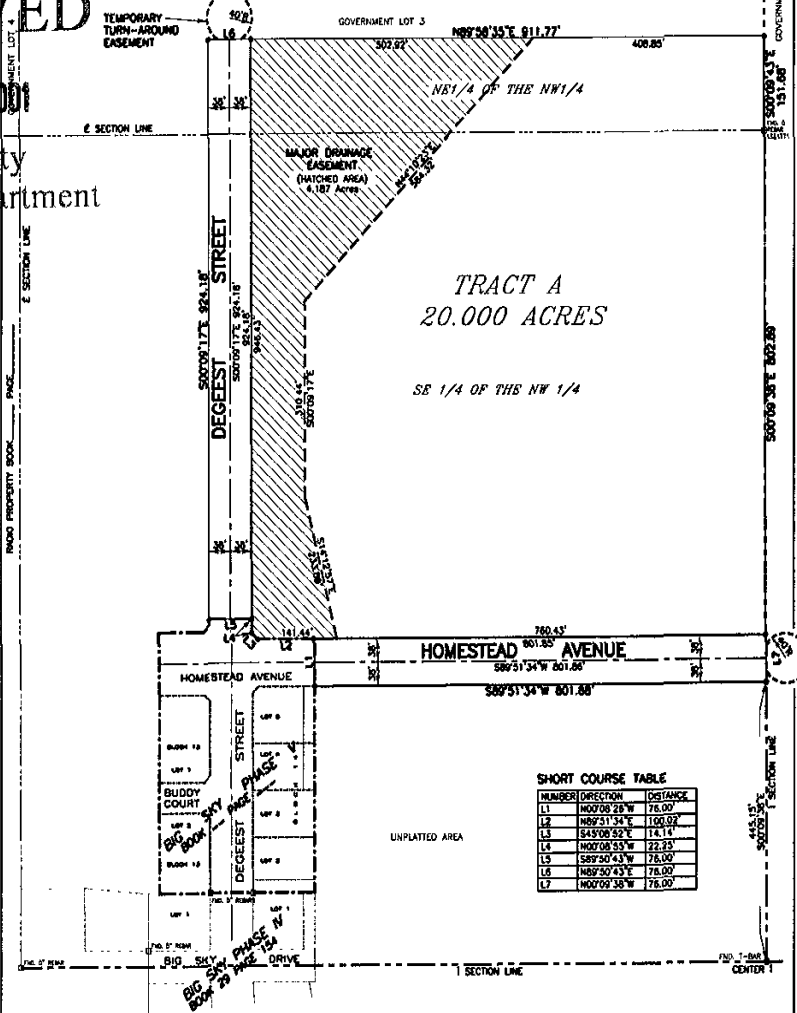


PLAT OF BIG SKY SUBDIVISION— PHASE VII
INCLUDING TRACT A; AND DEDICATED STREETS.

LOCATED IN THE SEINW AND THE NEINW OF SECTION 3, T1N, R6E, B.H.M., PENNINGTON COUNTY, SOUTH DAKOTA; EXCEPTING LOT 1, BLOCK 13 AND LOT 1, BLOCK 14 OF BIG SKY SUBDIVISION AND DEDICATED PUBLIC RIGHTS OF WAY (BIG SKY DRIVE AND DEGEST STREET), AS SHOWN ON THE PLAT FILED IN PLAT BOOK 29, PAGE 154, ALSO EXCEPTING LOTS 1 AND 2, BLOCK 13 AND LOTS 2, 3, 4 AND 5, BLOCK 14 AND DEDICATED PUBLIC RIGHTS OF WAY (DEGEST ST., BUDDY CT. AND HOMESTEAD AVE.) AS SHOWN ON THE PLAT FILED IN PLAT BOOK _____ PAGE _____

RECEIVED
24 2001
City Department

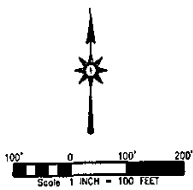


NOTES:

- MINOR DRAINAGE AND UTILITY EASEMENTS ARE HEREBY ESTABLISHED 8' WIDE ON THE INTERIOR SIDE OF ALL RIGHT-OF-WAY LINES.
- TOTAL PLATTED AREA, 23.012 ACRES; TRACT: 20.000 ACRES; DEDICATED PUBLIC RIGHT-OF-WAY: 3.012 ACRES.
- ANY MAJOR DRAINAGE EASEMENT SHOWN HEREON SHALL BE KEPT FREE OF ALL OBSTRUCTIONS INCLUDING BUT NOT LIMITED TO BUILDINGS, WALLS, FENCES, HEDGES, TREES, AND SHRUBS THESE EASEMENTS GRANT TO ALL PUBLIC AUTHORITIES THE RIGHT TO CONSTRUCT, OPERATE, MAINTAIN, INSPECT AND REPAIR SUCH IMPROVEMENTS AND STRUCTURES AS IT DEEMS EXPEDIENT TO FACILITATE DRAINAGE FROM ANY SOURCE.
- NON-ACCESS EASEMENTS ARE HEREBY ESTABLISHED ALONG THE FIRST FIFTY FEET OF CORNER LOTS AS INDICATED HEREON.

LEGEND:

- DENOTES SET 5/8" REBAR WITH SURVEY CAP MARKED "RLS 3977"
 - DENOTES FOUND SURVEY MONUMENT AS NOTED
- BASIS OF BEARING: PER PREVIOUSLY RECORDED PLAT(S).



<p>PREPARED BY: ARLETH & ASSOCIATES</p>	<p>382 MAIN STREET DEADWOOD, SD 57732 605-678-1637</p>	<p>JOB NO 02-0040 20</p>	<p>DATE: AUG. 23, 2001 SCALE: 1" = 100' DRAWN: BILL D.</p>	<p>APPROVED: JHA</p>	<p>PREPARED FOR: DREAM DESIGN INTERNATIONAL, INC. 3107 WEST MAIN STREET, SUITE D RAPID CITY, SOUTH DAKOTA 57701 (605) 344-0558</p>
				<p>DWG: 324AT.DWG</p>	