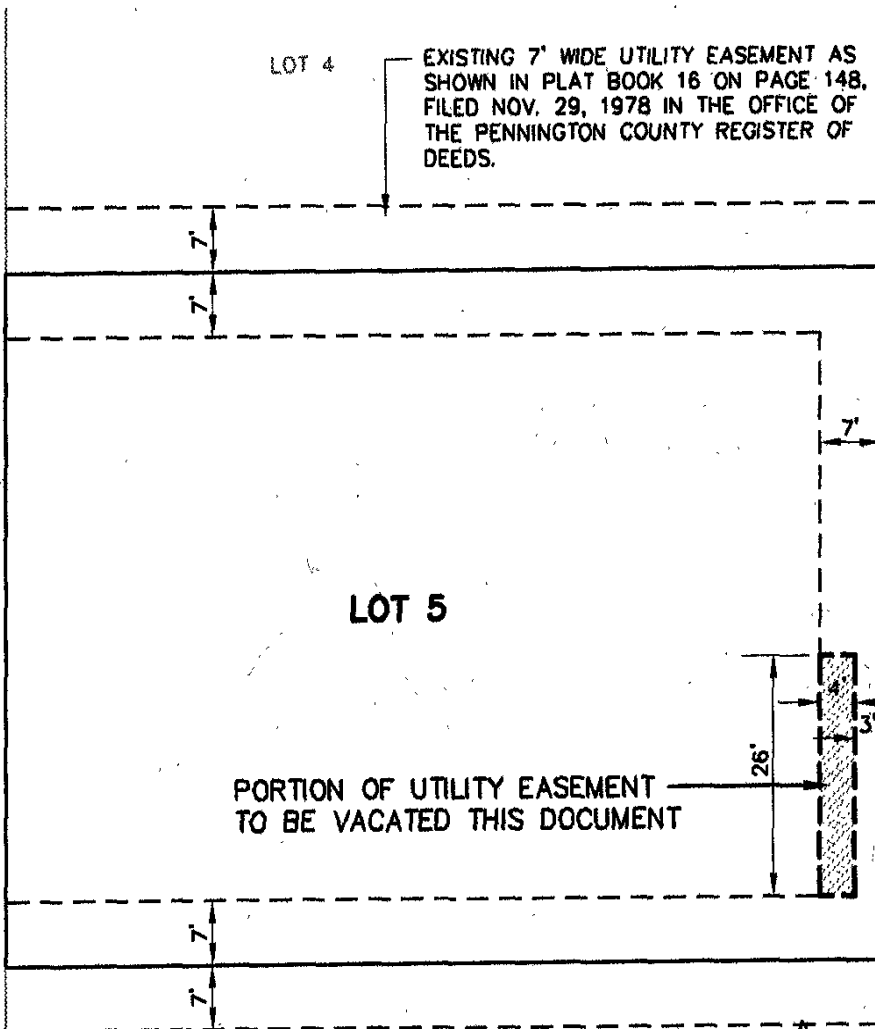


EXHIBIT OF  
**VACATION OF UTILITY EASEMENT**  
 LOT 5 OF BLOCK 2 OF MEADOW RIDGE SUBDIVISION  
 LOCATED IN THE W $\frac{1}{2}$  OF THE SW $\frac{1}{4}$   
 SECTION 2, T1N, R8E, BHM  
 PENNINGTON COUNTY, SOUTH DAKOTA

**01VE015**

**ENNEN DRIVE**  
 66' R.O.W. OF RECORD



LOT 4

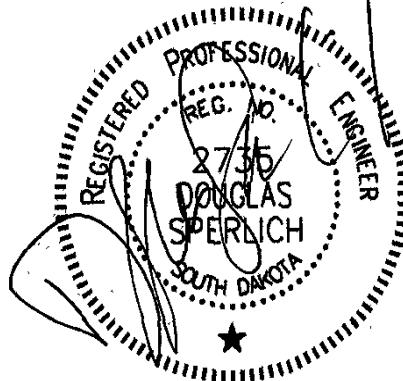
EXISTING 7' WIDE UTILITY EASEMENT AS SHOWN IN PLAT BOOK 16 ON PAGE 148, FILED NOV. 29, 1978 IN THE OFFICE OF THE PENNINGTON COUNTY REGISTER OF DEEDS.

**LOT 5**

**PORTION OF UTILITY EASEMENT TO BE VACATED THIS DOCUMENT**

LOT 6

RECEIVED  
 AUG 13 2001  
 Rapid City  
 Planning Department



AUGUST 7, 2001



SCALE 1" = 20'



**Renner & Sperlich Engineering Co.**

616 Sixth St. • Rapid City, SD 57701 • 605/342-1191  
 FAX: 605/342-1405 • E-MAIL: RSEORAPIDNET.COM