

PLAT OF RED ROCK ESTATES  
 LOTS 5-11, BLOCK 6

LOCATED IN THE SW 1/4 NE1/4 OF SECTION 29  
 T1N, R7E, B9M; PENNINGTON COUNTY, SOUTH DAKOTA

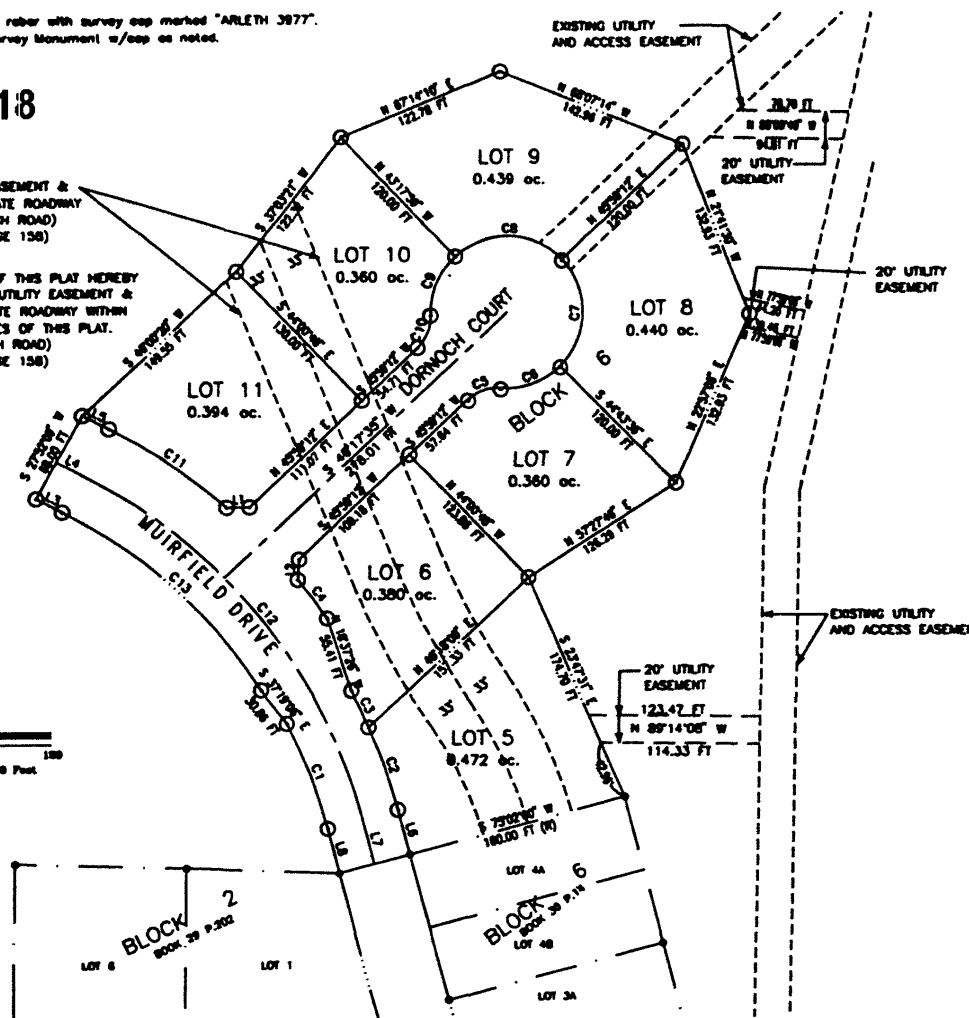
NOTES:

- Denotes set 5/8" rebar with survey cap marked "ARLETH 3977".
- Denotes Found Survey Monument w/cap as noted.

01PL118

88' UTILITY EASEMENT &  
 PLATTED PRIVATE ROADWAY  
 (PICARDI RANCH ROAD)  
 BOOK 24, PAGE 158)

ACCEPTANCE OF THIS PLAT HEREBY  
 WICATES THIS UTILITY EASEMENT &  
 PLATTED PRIVATE ROADWAY WITHIN  
 THE BOUNDARIES OF THIS PLAT.  
 (PICARDI RANCH ROAD)  
 BOOK 24, PAGE 158)



NUMBER	DELTA ANGLE	CHORD DIRECTION	TANGENT	RADIUS	ARC LENGTH	CHORD LENGTH
C1	12°33'13"	N 21°14'36" W	41.14	374.00	81.94	81.78
C2	06°34'25"	N 19°15'13" W	31.93	426.00	63.73	63.69
C3	03°56'38"	N 29°31'44" W	14.79	426.00	29.37	29.54
C4	04°36'06"	S 38°58'32" E	17.60	438.00	35.18	35.17
C5	48°47'23"	N 70°22'54" E	13.61	30.00	25.55	24.78
C6	49°30'12"	N 70°01'30" E	25.36	55.00	47.52	46.06
C7	89°17'12"	N 00°37'48" E	54.32	55.00	85.71	77.30
C8	89°17'12"	N 88°38'24" W	54.32	55.00	85.71	77.30
C9	49°30'12"	N 21°56'53" E	25.36	55.00	47.52	46.06
C10	48°47'23"	N 21°35'30" E	13.61	30.00	25.55	24.78
C11	17°18'12"	N 52°28'45" W	50.95	438.00	101.44	101.22
C12	47°08'31"	N 38°32'56" W	174.61	400.00	329.27	320.05
C13	29°53'46"	N 47°10'56" W	96.78	370.00	193.06	190.88

NOTES:

- MINOR DRAINAGE AND UTILITY EASEMENTS ARE HEREBY ESTABLISHED 8' WIDE ON THE INTERIOR SIDE OF ALL LOT LINES AND RIGHT-OF-WAY. (EXCEPT WHERE MAJOR DRAINAGE EASEMENTS ARE LOCATED)
- TOTAL PLATTED AREA: 3.840 ACRES; LOTS: 2.845 ACRES; DEDICATED PUBLIC RIGHT-OF-WAY: 0.995 ACRES.
- ANY MAJOR DRAINAGE EASEMENT SHOWN HEREON SHALL BE KEPT FREE OF ALL OBSTRUCTIONS INCLUDING BUT NOT LIMITED TO BUILDINGS, WALLS, FENCES, HEDGES, TREES, AND SHRUBS. THESE EASEMENTS GRANT TO ALL PUBLIC AUTHORITIES THE RIGHT TO CONSTRUCT, OPERATE, MAINTAIN, INSPECT AND REPAIR SUCH IMPROVEMENTS AND STRUCTURES AS IT DEEMS EXPEDIENT TO FACILITATE DRAINAGE FROM ANY SOURCE.

NUMBER	DIRECTION	DISTANCE
L1	S 88°55'20" W	18.17 FT
L2	N 02°39'43" E	14.67 FT
L3	N 62°07'51" W	20.88 FT
L4	N 62°07'51" W	20.88 FT
L5	N 62°07'51" W	20.88 FT
L6	N 1°38'00" W	33.48 FT
L7	N 1°38'00" W	33.48 FT
L8	N 1°38'00" W	33.48 FT

RECEIVED

NOV 09 2001

Rapid City  
 Planning Department