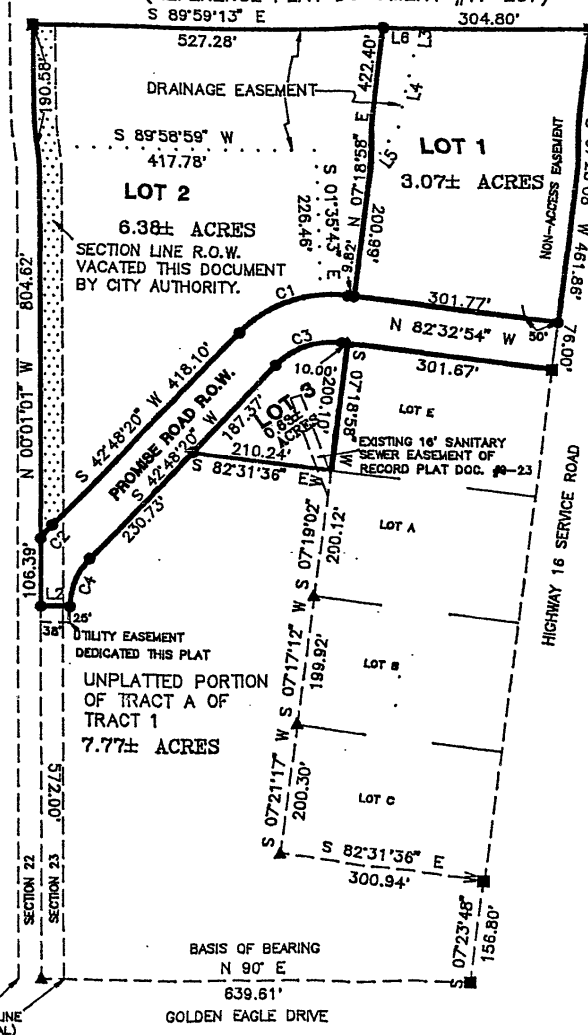


01VR006

PLAT OF LOTS 1, 2 AND 3 OF
 OWEN HIBBARD SUBDIVISION AND PROMISE ROAD
 DEDICATED RIGHT OF WAY, ALL LOCATED IN
 TRACT A OF TRACT 1 OF W1/2SW1/4,
 SECTION 23, T.1N., R.7E., B.H.M.,
 RAPID CITY, PENNINGTON COUNTY,
 SOUTH DAKOTA.

(REFERENCE PLAT DOCUMENT #11-207)



CURVE	RADIUS	ARC LENGTH
C1	188.00'	179.31'
C2	188.00'	27.42'
C3	112.00'	106.82'
C4	112.00'	83.71'

LINE	BEARING	DISTANCE
L1	S 42°48'20" W	230.73'
L2	S 89°58'59" W	43.00'
L3	S 01°56'04" W	42.34'
L4	S 12°19'49" W	114.69'
L5	S 36°11'50" W	80.83'
L6	S 89°59'13" E	45.48'

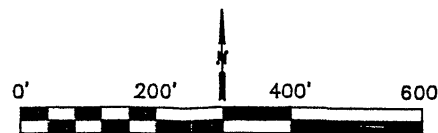
AREA OF DEDICATED PROMISE ROAD
 RIGHT OF WAY 1.66± ACRES

- NOTES: 1. ADJACENT TO ALL SIDE AND REAR LOT LINES AN 8' UTILITY AND MINOR DRAINAGE EASEMENT.
 2. ALL MAJOR DRAINAGE EASEMENTS SHOWN HEREON SHALL BE KEPT FREE OF ALL OBSTRUCTIONS INCLUDING, BUT NOT LIMITED TO: BUILDINGS, WALLS, FENCES, HEDGES, TREES OR SHRUBS. THESE EASEMENTS GRANT TO ALL PUBLIC AUTHORITIES THE RIGHT TO CONSTRUCT, OPERATE, MAINTAIN AND REPAIR SUCH IMPROVEMENTS AS IT DEEMS EXPEDIENT TO FACILITATE DRAINAGE FROM ANY SOURCE.

LEGEND

- SET BHS CORNER
- FOUND "FMG" CAP
- ▲ FOUND REBAR

PREPARED BY:
 BLACK HILLS SURVEYING, INC.
 P.O. BOX 408
 SPEARFISH, SOUTH DAKOTA 57783
 605-642-8133



JULY 2001