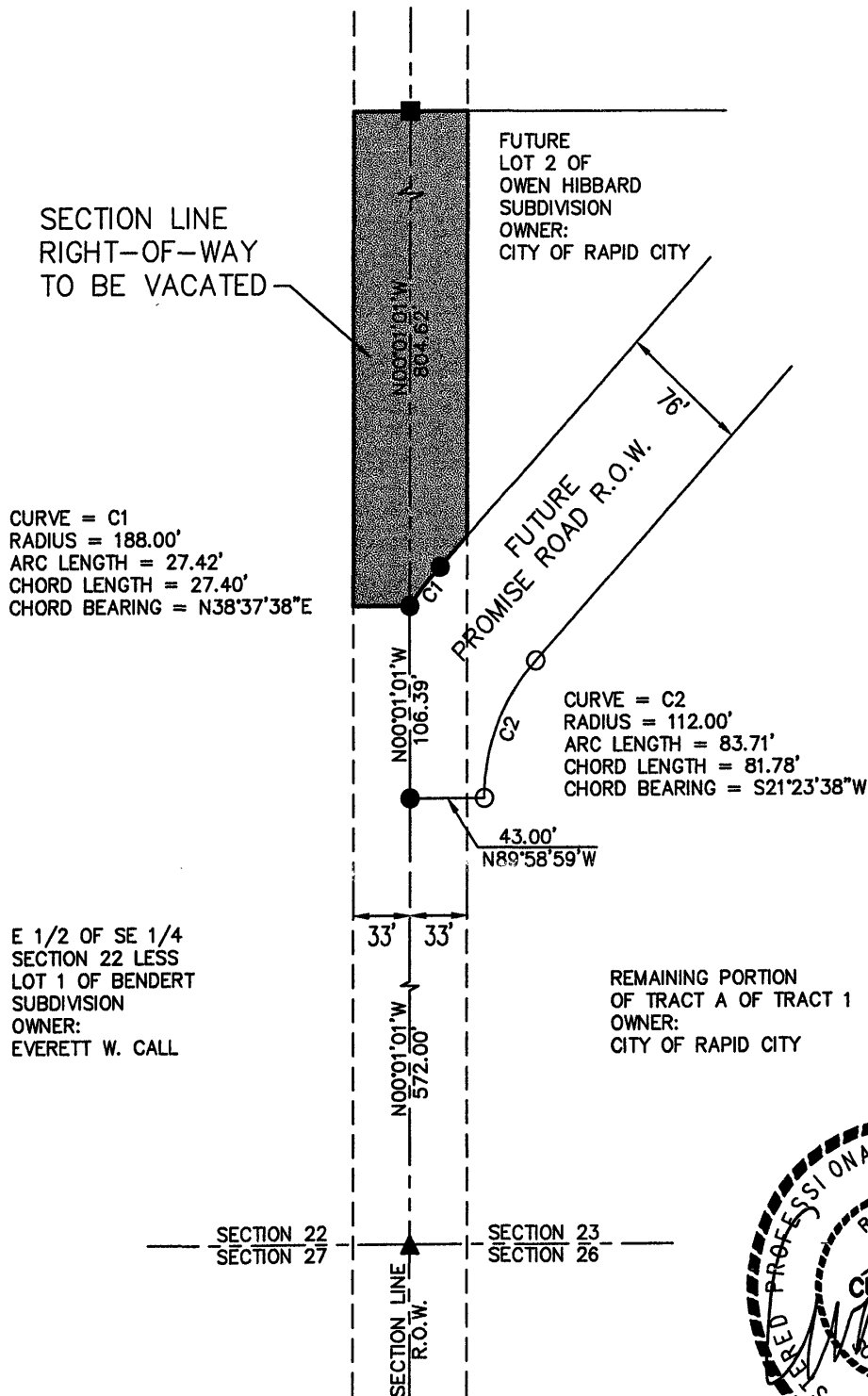


# EXHIBIT "A"

VACATION OF A PORTION OF SECTION LINE RIGHT-OF-WAY  
LOCATED IN TRACT A OF TRACT 1 OF W 1/2 SW 1/4  
SECTION 23 AND E 1/2 SE 1/4 SECTION 22,  
LESS LOT 1 OF BENDERT SUBDIVISION, T1N, R7E, B.H.M.,  
RAPID CITY, PENNINGTON COUNTY, SOUTH DAKOTA



SCALE: 1" = 100'  
OCTOBER 18, 2001

### LEGEND

- NOT FOUND
- "BHS" CAP
- "FMG" CAP
- ▲ REBAR

CURVE = C1  
 RADIUS = 188.00'  
 ARC LENGTH = 27.42'  
 CHORD LENGTH = 27.40'  
 CHORD BEARING = N38°37'38"E

CURVE = C2  
 RADIUS = 112.00'  
 ARC LENGTH = 83.71'  
 CHORD LENGTH = 81.78'  
 CHORD BEARING = S21°23'38"W

E 1/2 OF SE 1/4  
 SECTION 22 LESS  
 LOT 1 OF BENDERT  
 SUBDIVISION  
 OWNER:  
 EVERETT W. CALL

REMAINING PORTION  
 OF TRACT A OF TRACT 1  
 OWNER:  
 CITY OF RAPID CITY

