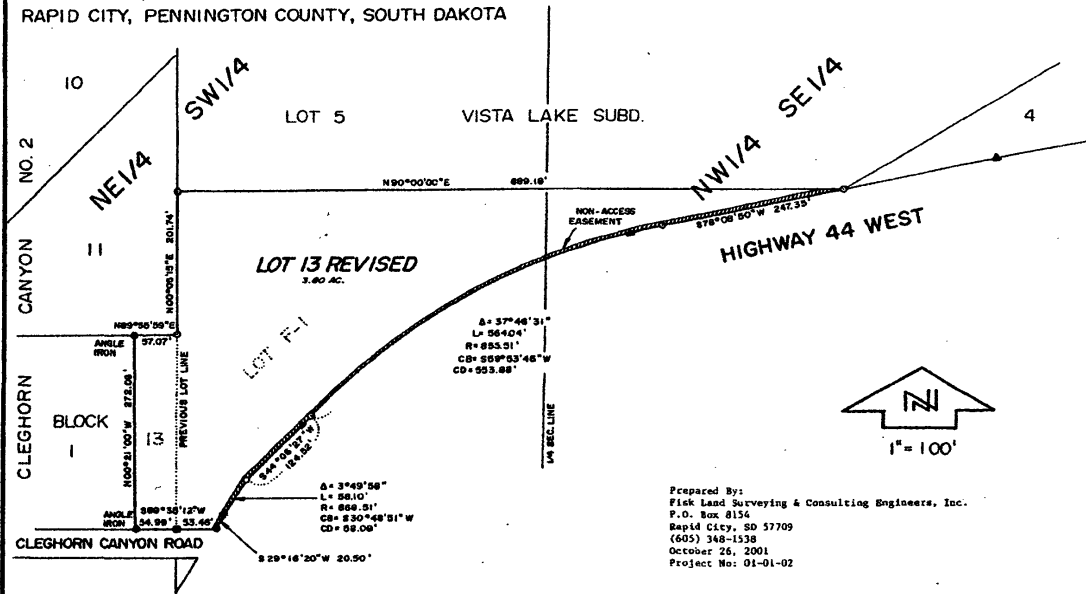


01SV033

PLAT OF LOT 13 REVISED OF BLOCK 2 OF CLEGHORN CANYON NO. 2
 FORMERLY ALL OF LOT 13 OF BLOCK 2 OF CLEGHORN CANYON NO. 2 AND A PORTION OF LOT F-1 OF FISH HATCHERY
 SUBDIVISION, LOCATED IN THE NE 1/4 SW 1/4 AND NW 1/4 SE 1/4 OF SECTION 8, T1N, R7E, BHM,
 RAPID CITY, PENNINGTON COUNTY, SOUTH DAKOTA



Prepared By:
 Fisk Land Surveying & Consulting Engineers, Inc.
 P.O. Box 8154
 Rapid City, SD 57709
 (605) 348-1538
 October 26, 2001
 Project No: 01-01-02

- - Found Monument As Shown
- ▲ - Found Highway ROW Marker
- ⊙ - Set Rebar With Survey Cap Marked "RW FISK 6565"