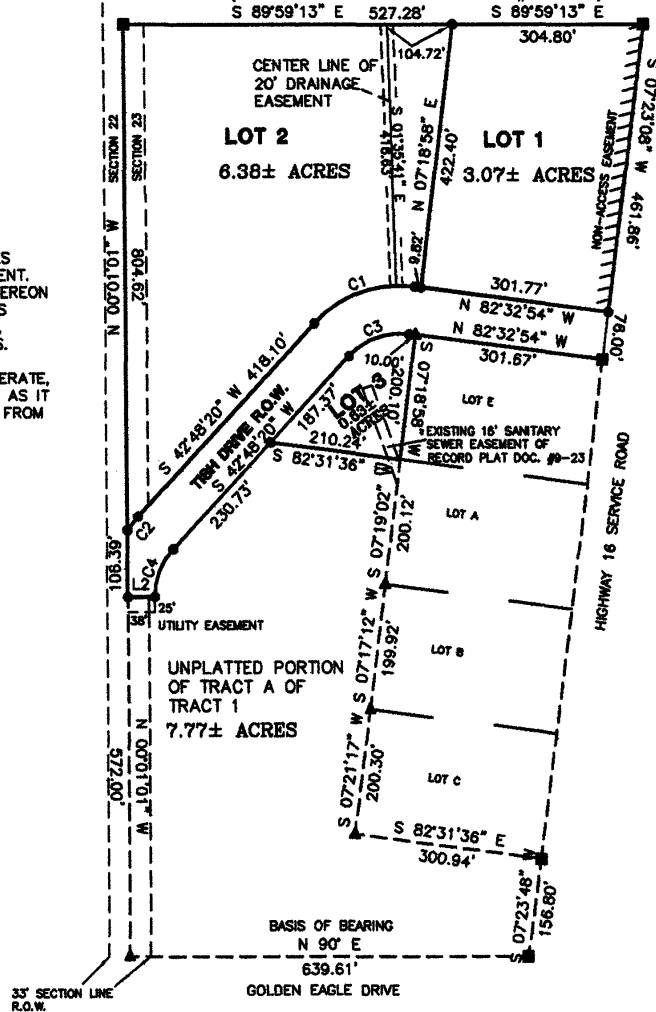


01PL071

PRELIMINARY PLAT OF LOTS 1, 2 AND 3 OF
OWEN HIBBARD SUBDIVISION AND TISH DRIVE
DEDICATED RIGHT OF WAY, ALL LOCATED IN
TRACT A OF TRACT 1 OF W1/2SW1/4,
SECTION 23, T.1N., R.7E., B.H.M.,
RAPID CITY, PENNINGTON COUNTY,
SOUTH DAKOTA.

(REFERENCE PLAT DOCUMENT #11-207)

S 89°59'13" E 527.28' S 69°59'13" E



- NOTES: 1. ADJACENT TO ALL SIDE AND REAR LOT LINES AN 'B' UTILITY AND MINOR DRAINAGE EASEMENT.
2. ALL MAJOR DRAINAGE EASEMENTS SHOWN HEREON SHALL BE KEPT FREE OF ALL OBSTRUCTIONS INCLUDING, BUT NOT LIMITED TO: BUILDINGS, WALLS, FENCES, HEDGES, TREES OR SHRUBS. THESE EASEMENTS GRANT TO ALL PUBLIC AUTHORITIES THE RIGHT TO CONSTRUCT, OPERATE, MAINTAIN AND REPAIR SUCH IMPROVEMENTS AS IT DEEMS EXPEDIENT TO FACILITATE DRAINAGE FROM ANY SOURCE.

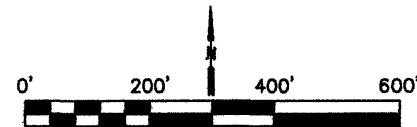
LEGEND

- SET BHS CORNER
- FOUND "FMG" CAP
- ▲ FOUND REBAR

CURVE	RADIUS	ARC LENGTH
C1	188.00'	179.31'
C2	188.00'	27.42'
C3	112.00'	106.82'
C4	112.00'	83.71'

LINE	BEARING	DISTANCE
L1	S 42°48'20" W	230.73'
L2	S 89°58'59" W	43.00'

AREA OF DEDICATED TISH DRIVE 1.66± ACRES



JULY 2001