

Inch = 100 Feet

ANGLE	RADIUS	ARC LENGTH
48°	400.00	100.51
10°	400.00	246.58
55°	426.00	100.14
35°	426.00	60.67
58°	426.00	95.87
37°	426.00	95.74
51°	374.00	55.03
36°	426.00	95.00
11°	374.00	83.36
32°	426.00	76.03
05°	426.00	37.19
19°	374.00	17.12
19°	426.00	39.69
39°	400.00	158.11

DIRECTION	DISTANCE
S 4°57' E	14.68'
S 17°18' E	14.68'
S 12°58' E	40.13'

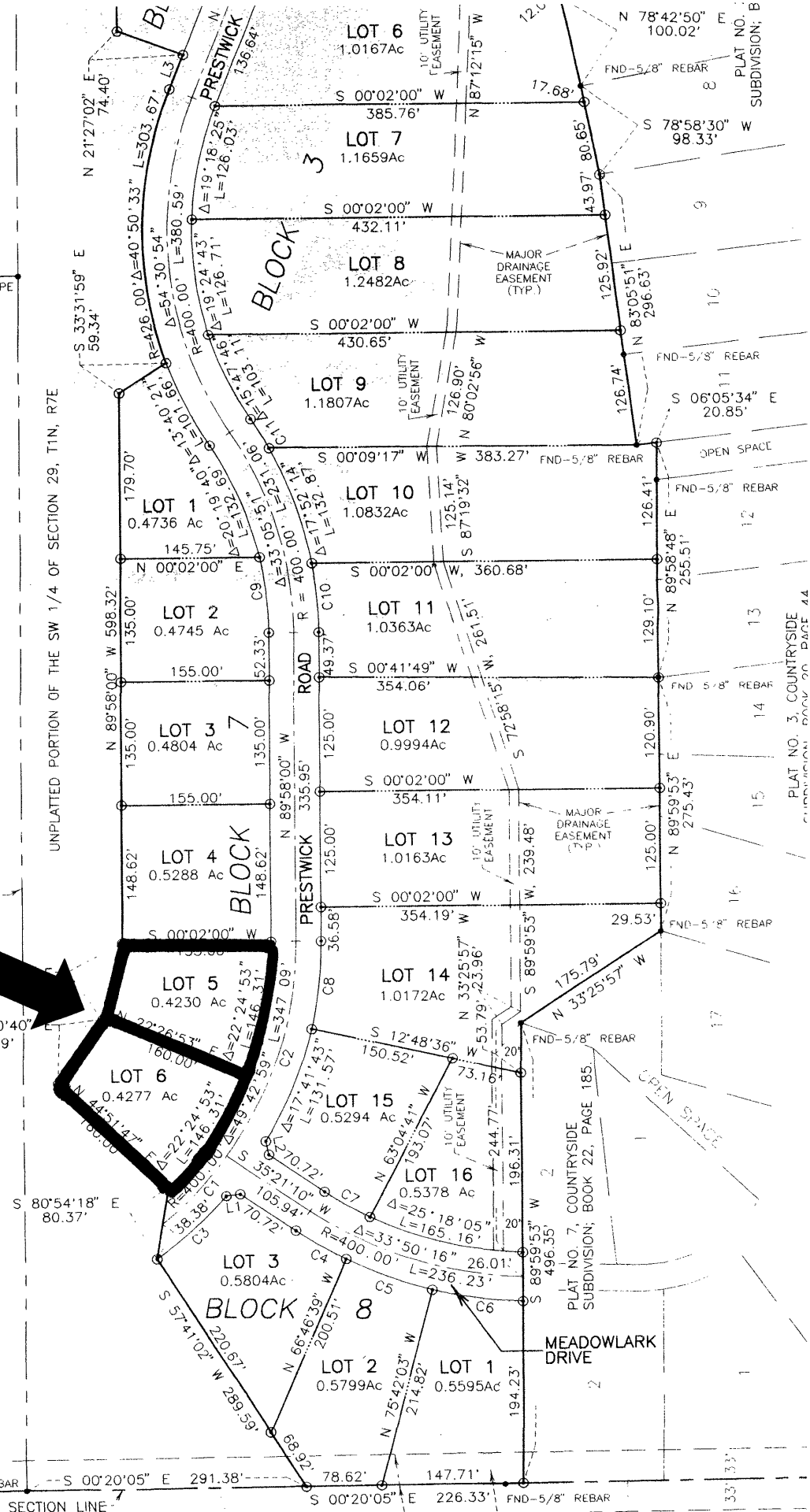
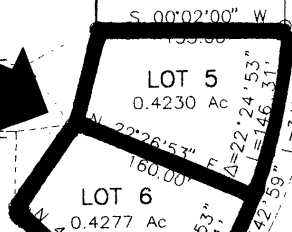
UNPLATTED PORTION OF THE NW 1/4 OF SECTION 29, T1N, R7E

UNPLATTED PORTION OF THE SW 1/4 OF SECTION 29, T1N, R7E

1/4 SECTION LINE

EXISTING 33' SECTION LINE R/W

SECTION LINE



PLAT NO. 3, COUNTRYSIDE SUBDIVISION, BOOK 20, PAGE 44

PLAT NO. 7, COUNTRYSIDE SUBDIVISION, BOOK 22, PAGE 185

MEADOWLARK DRIVE