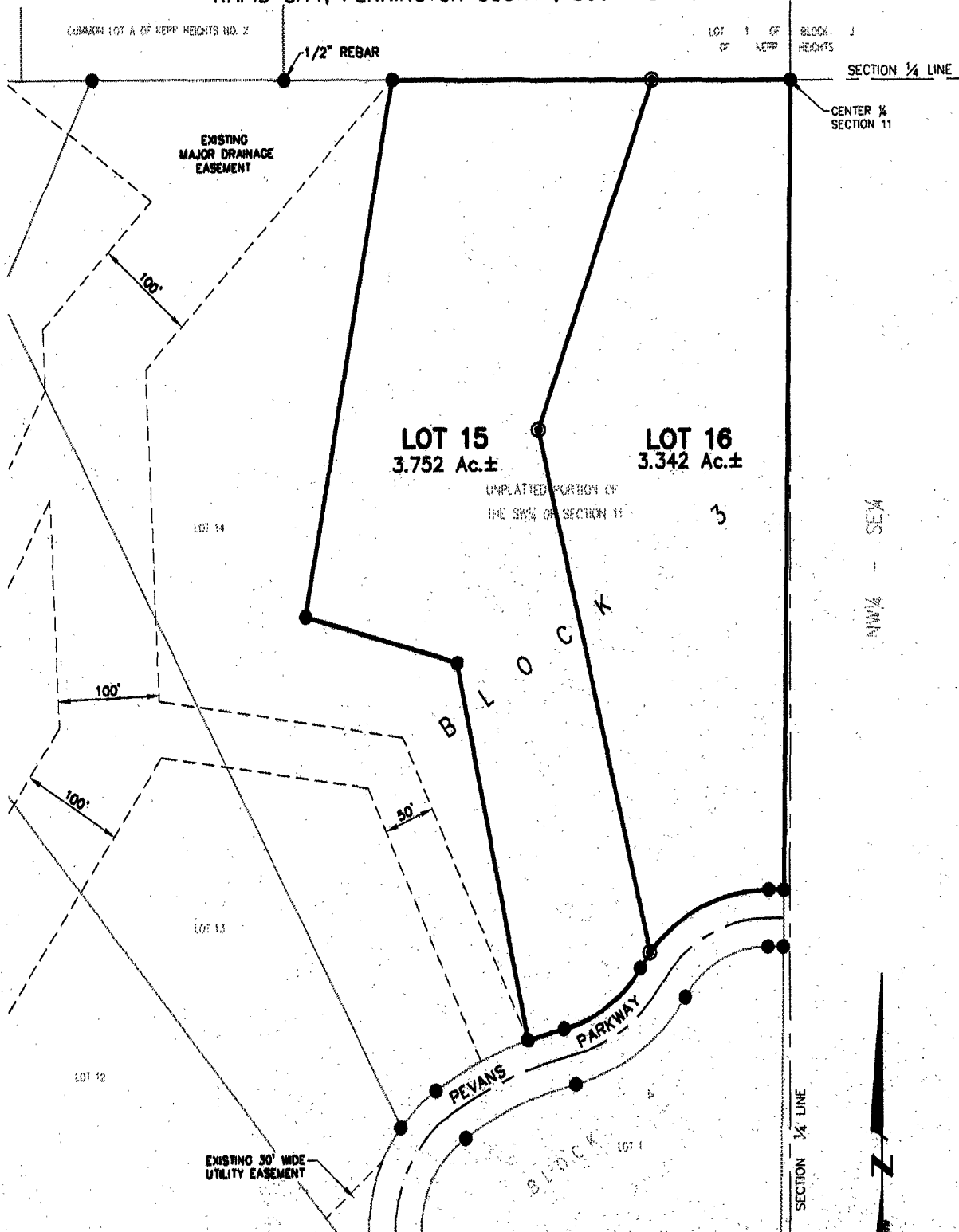


01PL106

PLAT OF LOT 15 AND LOT 16 OF BLOCK 3 SKYLINE PINES SUBDIVISION

(formerly a portion of the SW $\frac{1}{4}$ of Section 11, T1N, R7E, B.H.M.)
LOCATED IN THE SW $\frac{1}{4}$
SECTION 11, T1N, R7E, B.H.M.
RAPID CITY, PENNINGTON COUNTY, SOUTH DAKOTA



Renner & Sperlich Engineering Co.

616 Sixth St. • Rapid City, SD 57701 • 605/342-1191
FAX: 605/342-1405 • E-MAIL: RSE@RAPIDNET.COM

SEPTEMBER 19, 2001

N.T.S.