

01PL109

PLAT OF

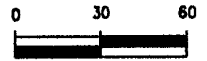
# LOT 10R AND LOT 11R OF BLOCK 2 COUNTRY CLUB HEIGHTS NO. 2

(formerly Lot 10 and Lot 11 of Block 2, Country Club Heights No. 2)

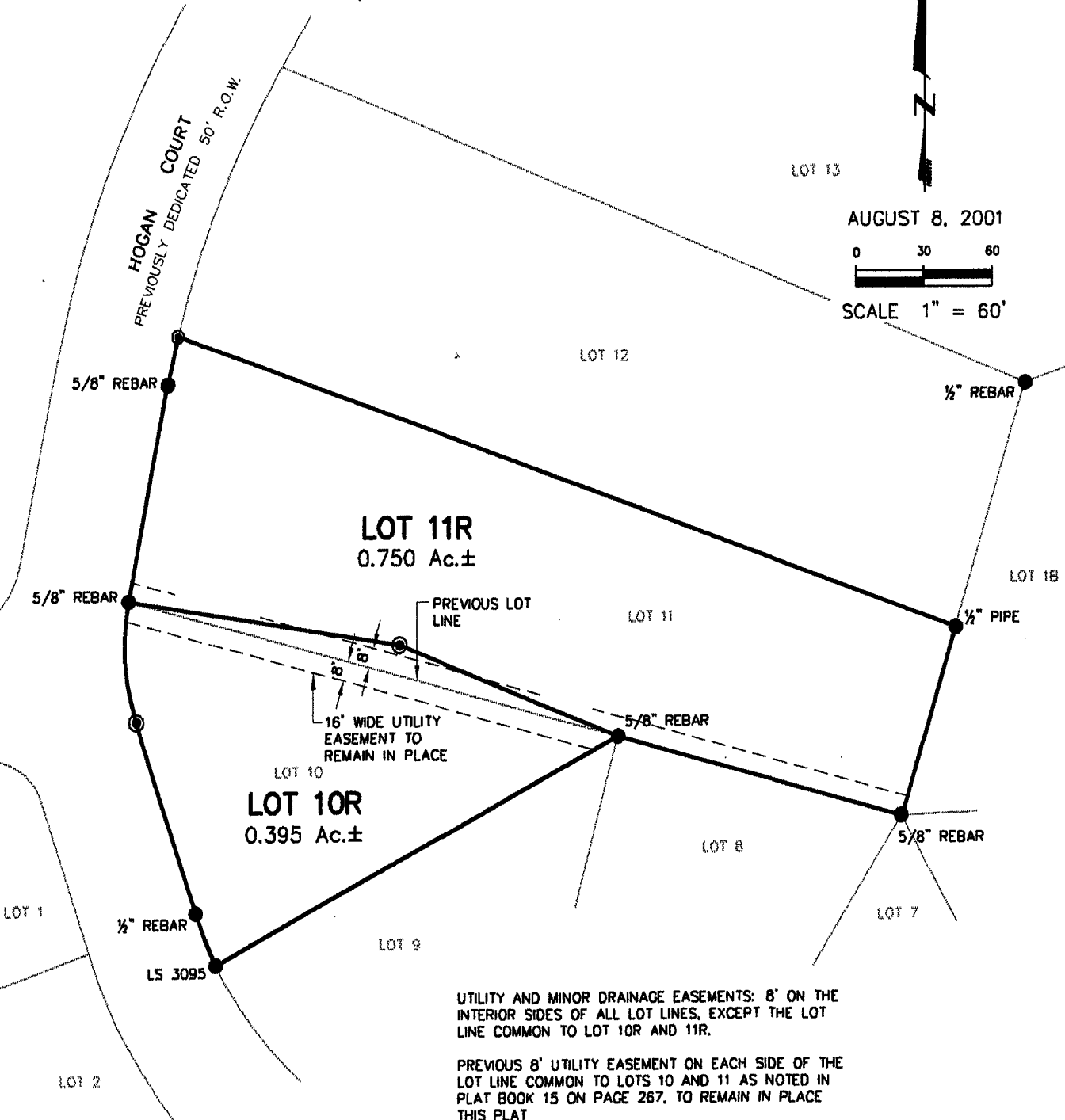
LOCATED IN THE SE $\frac{1}{4}$  OF THE SE $\frac{1}{4}$   
SECTION 9, T1N, R7E, BHM  
RAPID CITY, PENNINGTON COUNTY, SOUTH DAKOTA



AUGUST 8, 2001



SCALE 1" = 60'



UTILITY AND MINOR DRAINAGE EASEMENTS: 8' ON THE INTERIOR SIDES OF ALL LOT LINES, EXCEPT THE LOT LINE COMMON TO LOT 10R AND 11R.

PREVIOUS 8' UTILITY EASEMENT ON EACH SIDE OF THE LOT LINE COMMON TO LOTS 10 AND 11 AS NOTED IN PLAT BOOK 15 ON PAGE 267, TO REMAIN IN PLACE THIS PLAT



Renner & Sperlich Engineering Co.

616 Sixth St. • Rapid City, SD 57701 • 605/342-1191

FAX: 605/342-1405 • E-MAIL: RSEC@RAPIDNET.COM