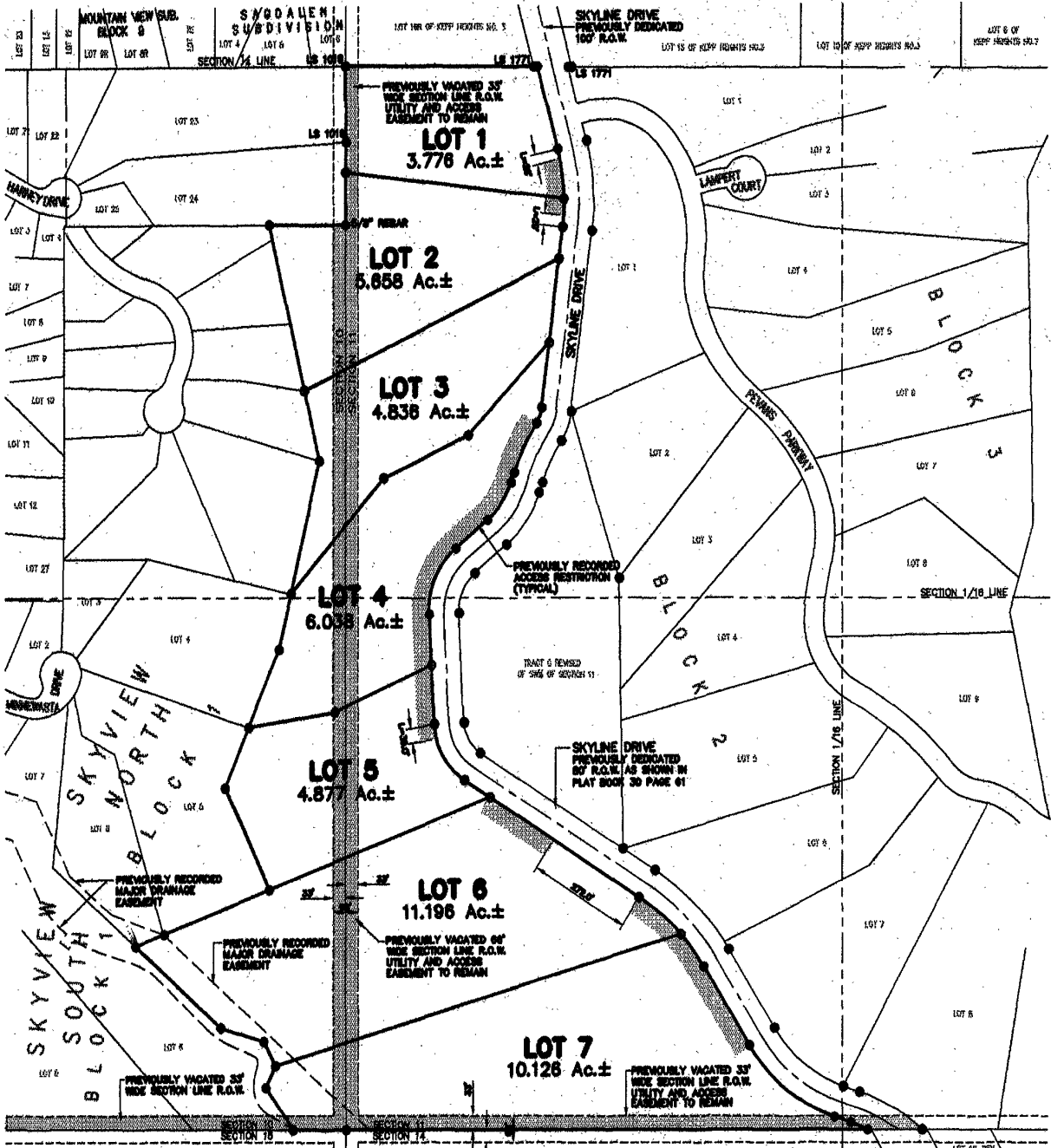


LOTS 1 THRU 7 OF BLOCK 1 SKYLINE PINES SUBDIVISION

(formerly Block 1 of Skyline Pines Subdivision)

LOCATED IN THE E½ OF THE SE¼ OF SECTION 10, THE SE¼ OF THE SW¼,
AND THE W½ OF THE SW¼ OF SECTION 11, TIN, R7E, B.H.M.
RAPID CITY, PENNINGTON COUNTY, SOUTH DAKOTA



NOTE:
SEE PLAT BOOK 30 PAGE 61 FOR
RECORDING INFORMATION ON BLOCK 1
AND SKYLINE DRIVE RIGHT-OF-WAY

NOTES:

BUILDINGS ON ANY LOTS HAVING DRIVEWAYS EXCEEDING 10% SLOPE SHALL BE EQUIPPED WITH AN AUTOMATED RESIDENTIAL SPRAWLER SYSTEM SUBJECT TO APPROVAL BY THE RAPID CITY FIRE DEPARTMENT.

MAXIMUM DRIVEWAY SLOPE SHALL NOT EXCEED THE LIMITS ESTABLISHED IN THE RAPID CITY STREET CRITERIA MANUAL WITHOUT WRITTEN APPROVAL OF THE CITY OF RAPID CITY.

SPECIFIC GEOTECHNICAL AND SLOPE STABILITY INFORMATION MUST BE SUBMITTED TO THE CITY OF RAPID CITY FOR REVIEW AND APPROVAL PRIOR TO THE ISSUANCE OF ANY BUILDING PERMITS.



Renner & Sperlich Engineering Co.

616 Sixth St. • Rapid City, SD 57701 • 605/342-1191
FAX: 605/342-1405 • E-MAIL: RSECO@RAPIDNET.COM

SEPTEMBER 19, 2001



SCALE 1" = 400'

