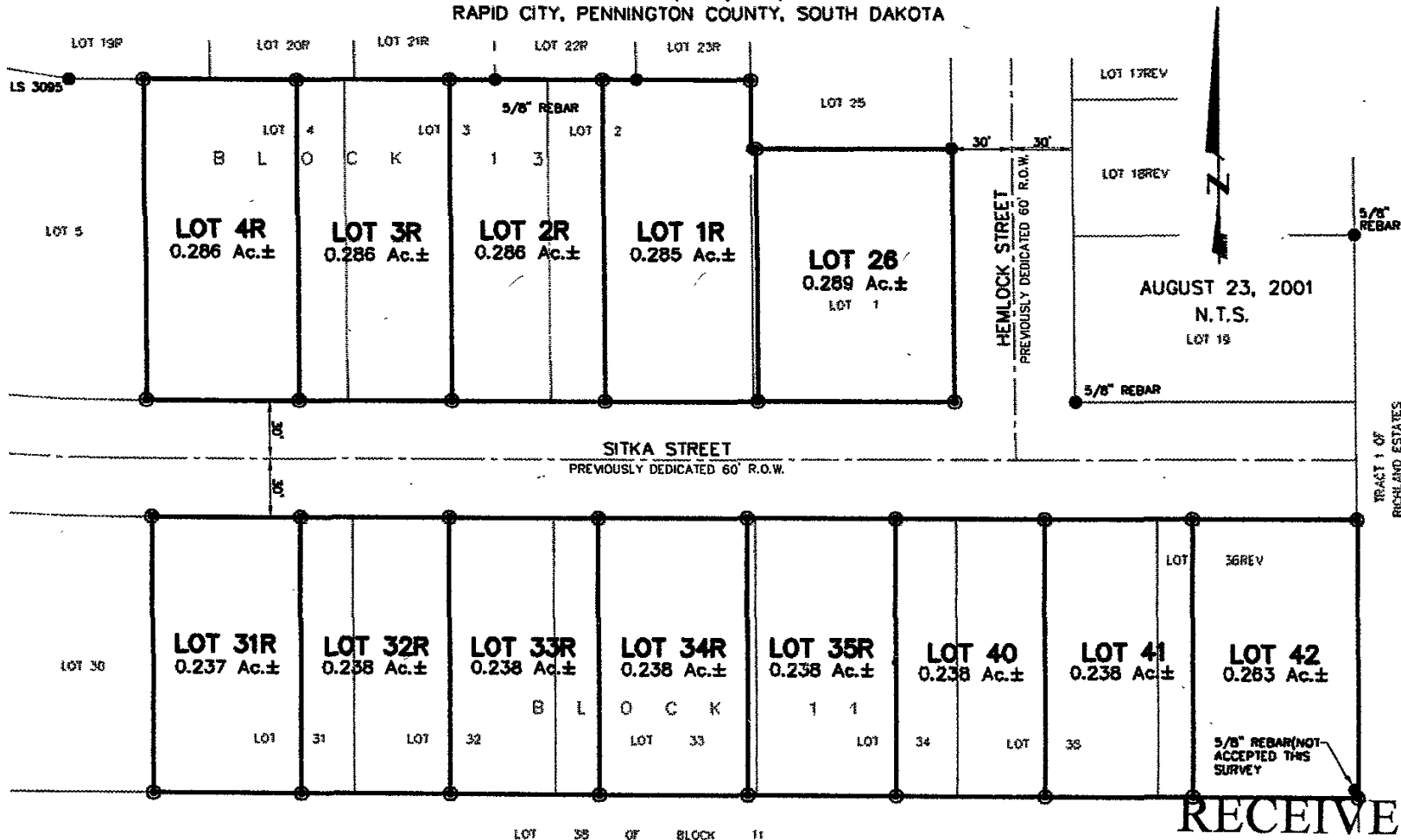


01PL096

PLAT OF
LOTS 31R THROUGH 35R, AND LOTS 40 THROUGH 42, OF BLOCK 11,
AND LOTS 1R THROUGH 4R, AND LOT 26, OF BLOCK 13,

ROBBINSDALE ADDITION NO. 8

(formerly Lots 31 through 35, and Lot 36 Rev. of Block 11, and Lots 1 through 4 of Block 13, of Robbinsdale Addition No. 8)
LOCATED IN THE NW¼ OF THE NE¼ AND IN THE SW¼ OF THE NE¼
SECTION 18, T1N, R8E, BHM
RAPID CITY, PENNINGTON COUNTY, SOUTH DAKOTA



RECEIVED



Renner & Sperlich Engineering Co.

616 Sixth St. • Rapid City, SD 57701 • 605/342-1191
FAX: 605/342-1405 • E-MAIL: RSEC@RAPIDNET.COM

ACCEPTANCE OF THIS PLAT HEREBY VACATES THE PREVIOUS 8' UTILITY AND DRAINAGE EASEMENTS ON THE INTERIOR SIDES OF ALL SIDE AND REAR LOTS LINES ON LOTS 31 THROUGH 35, AND LOT 36 REV. OF BLOCK 11, AND LOTS 1 THROUGH 4 OF BLOCK 13 OF ROBBINSDALE ADDITION NO. 8, AS SHOWN IN PLAT RECORDED SEPTEMBER 19, 1986, IN PLAT BOOK 21 ON PAGE 40, AND THE PLAT RECORDED APRIL 23, 1987, IN PLAT BOOK 21 ON PAGE 138, IN THE OFFICE OF THE PENNINGTON COUNTY REGISTER OF DEEDS.

AUG 24 2001
Rapid City
Planning Department