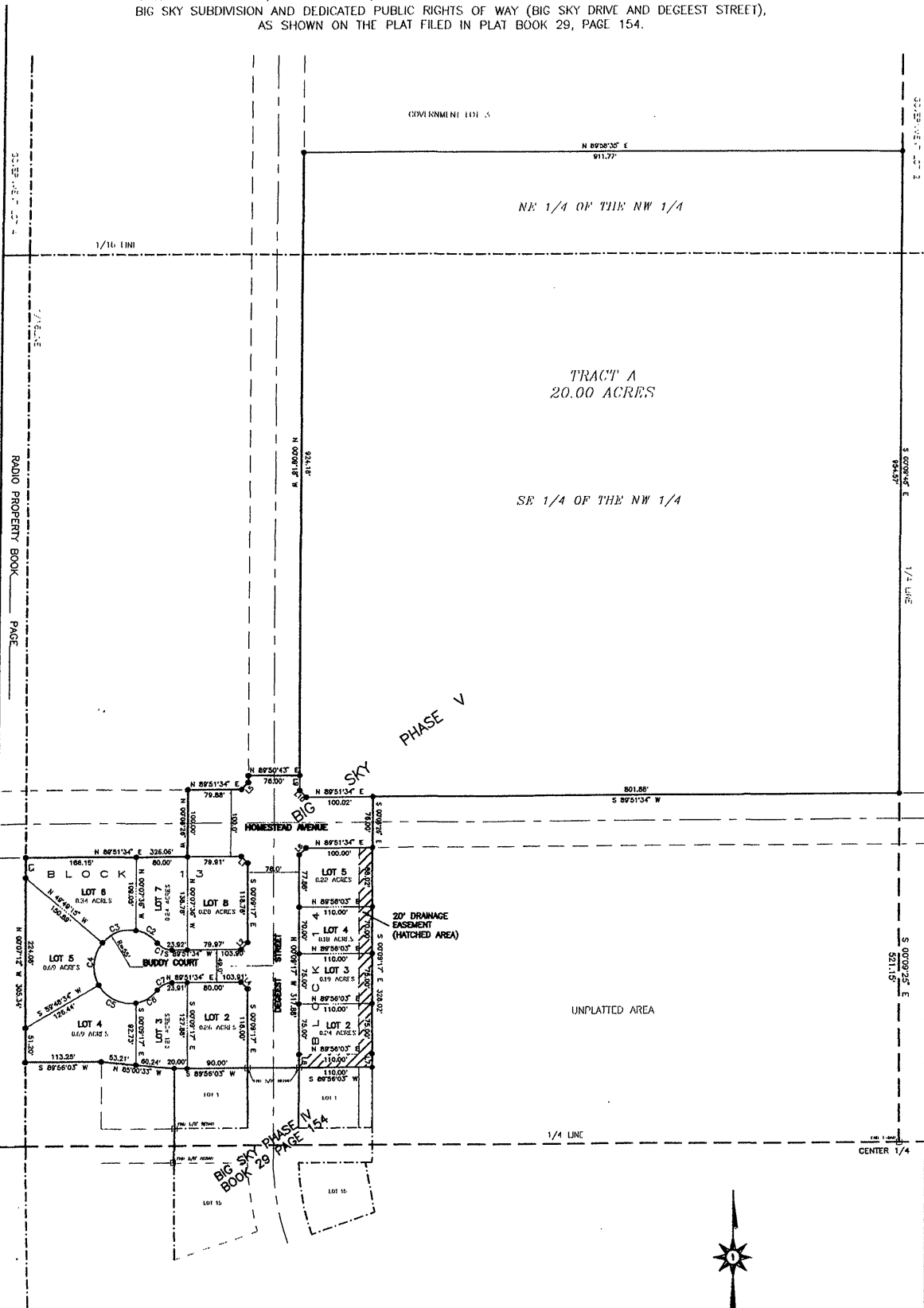


INCLUDING LOTS 2-8, BLOCK 13; LOTS 2-5, BLOCK 14; TRACT A; AND DEDICATED STREETS.
 LOCATED IN THE SE 1/4 NW 1/4 AND THE NE 1/4 NW 1/4 OF SECTION 3, T1N, R8E, B.H.M.,
 PENNINGTON COUNTY, SOUTH DAKOTA; EXCEPTING LOT 1 IN BLOCK 13 AND LOT 1 IN BLOCK 14 OF
 BIG SKY SUBDIVISION AND DEDICATED PUBLIC RIGHTS OF WAY (BIG SKY DRIVE AND DEGEEST STREET),
 AS SHOWN ON THE PLAT FILED IN PLAT BOOK 29, PAGE 154.



NOTES:
 ● DENOTES 5/8" REBAR WITH SURVEY CAP MARKED "RLS 3977"
 □ DENOTES FOUND SURVEY MONUMENT
 BASIS OF BEARING:
 ACIMAG'S
 TOTAL PLATTED AREA - 24.386 ACRES.
 LOT AREA - 22.858 ACRES.
 TOTAL ROW PLATTED AREA - 1.528 ACRES.
 DEDICATED FOR PUBLIC USE BY THIS PLAN

LINE	BEARING	DISTANCE
L1	S 45°28'55" E	144.4'
L2	S 44°21'00" W	141.0'
L3	N 80°27'25" V	20.00'
L4	S 45°28'55" E	144.4'
L5	N 44°21'00" E	141.4'
L6	N 44°21'00" E	141.4'
L7	S 90°29'17" E	20.00'
L8	N 80°27'25" V	20.00'
L9	S 90°29'17" E	22.25'
L10	S 45°28'55" E	141.4'

