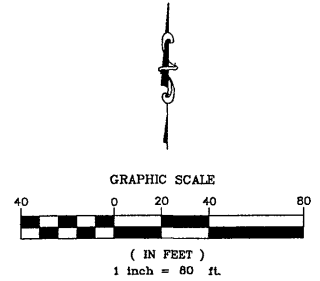


01VE004

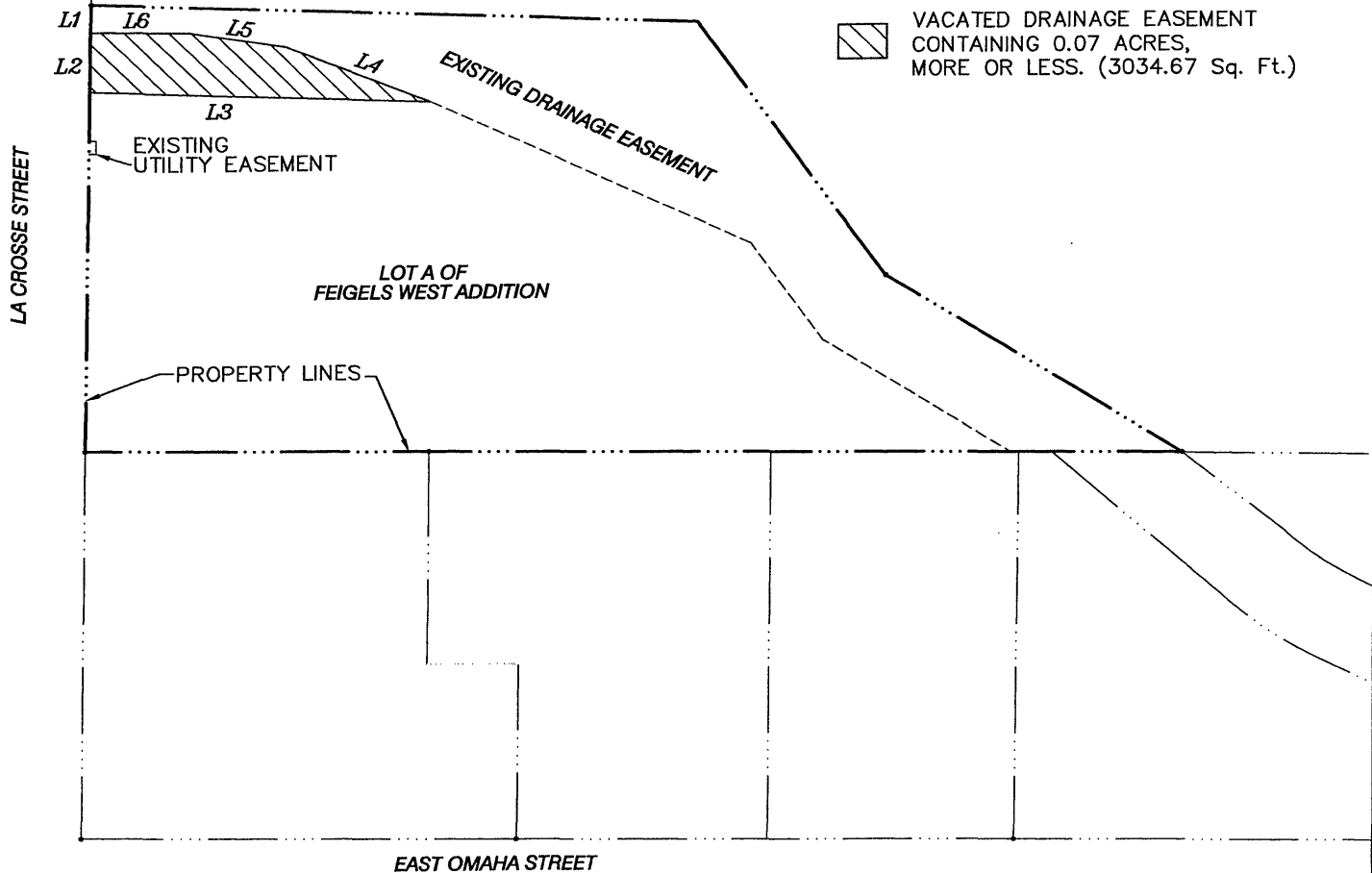
EXHIBIT "A"

VACATION OF DRAINAGE EASEMENT FOR LOT A OF FEIGELS WEST ADDITION IN THE SW1/4 SE1/4 SEC. 31, T2N, R8E, B.H.M. RAPID CITY, PENNINGTON COUNTY, S.D.

LINE TABLE		
LINE	LENGTH	BEARING
L1	12.83'	S00°26'00"W
L2	27.17'	S00°26'00"W
L3	149.93'	S87°53'38"E
L4	68.96'	N68°19'02"W
L5	43.56'	N80°54'22"W
L6	42.52'	N89°34'00"W



BASIS OF BEARING:
WESTERLY LINE OF LOT A OF
FEIGELS WEST ADDITION;
SAID BEARING BEING:
N 00°26'00" E



4/11/01



BANNER
CONSULTING ENGINEERS & ARCHITECTS

RAPID CITY, SOUTH DAKOTA TEL. (605) 343-0222 FAX. (605) 343-3477
2465 W. CHICAGO ST., RAPID CITY, SD 57702