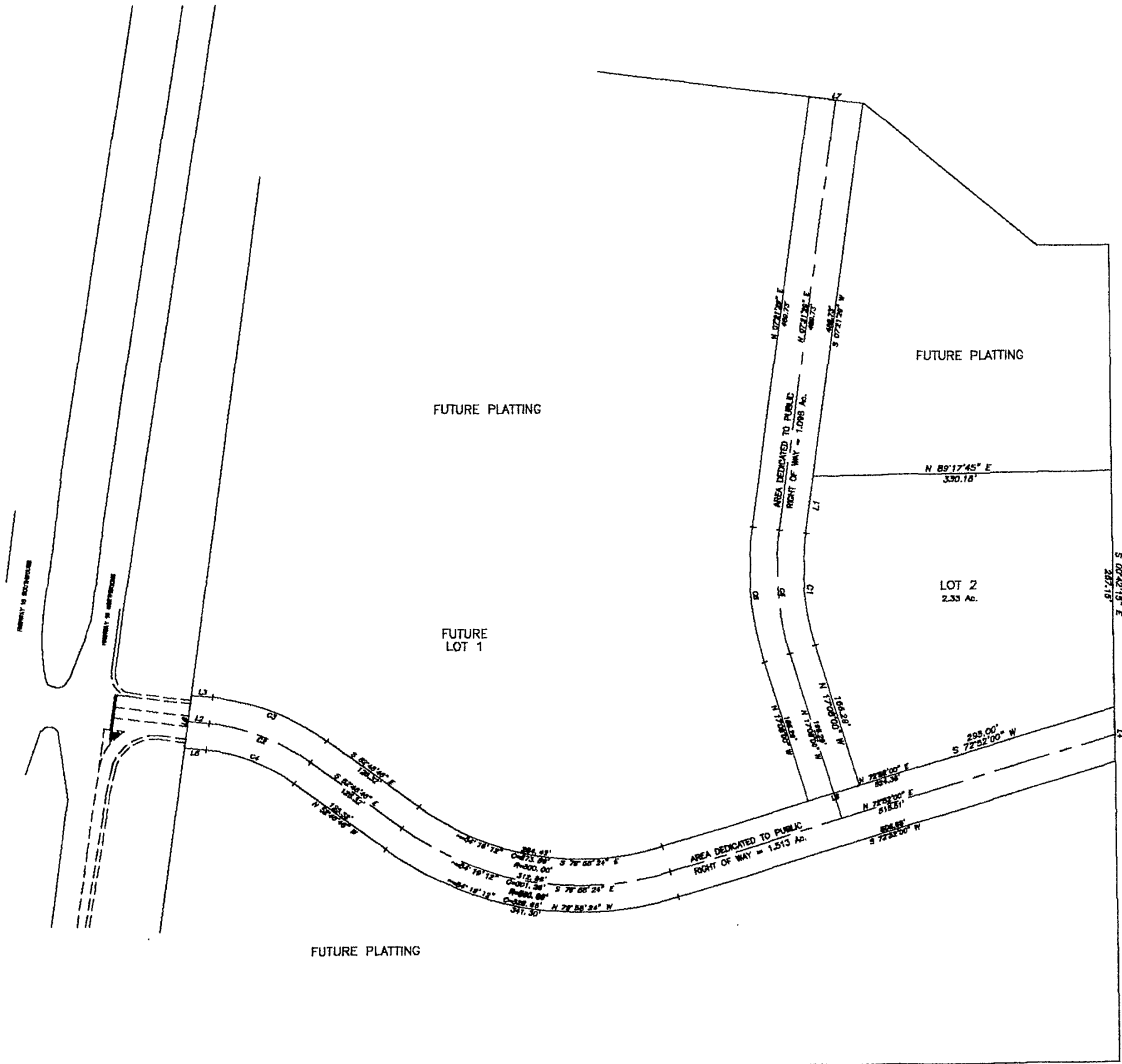


01PL033

PLAT OF
LOT 2 OF OLD RODEO SUBDIVISION

LOCATED IN THE N $\frac{1}{2}$ OF THE SW $\frac{1}{4}$ OF SECTION 26, T1N, R7E, B.H.M.
 PENNINGTON COUNTY, SOUTH DAKOTA



APRIL 27, 2001

LINE TABLE

LINE	BEARING	DISTANCE
L1	N 07°21'29" E	64.80
L2	S 83°05'07" E	22.94
L3	S 83°05'07" E	22.73
L4	S 00°42'15" E	62.55
L5	N 83°05'07" W	23.16
L6	N 07°19'45" E	60.00
L7	S 82°38'31" E	60.00
L8	S 72°52'00" W	60.00

CURVE TABLE

CURVE	ARC	DELTA	RADIUS	CHORD LENGTH	CHORD BEARING
C1	128.24	24°29'29"	300.00	127.26	N 04°53'16" W
C2	121.52	30°16'20"	230.00	120.11	S 67°56'58" E
C3	137.37	30°16'20"	260.00	135.78	S 67°56'58" E
C4	105.67	30°16'20"	200.00	104.44	N 67°56'58" W
C5	141.06	24°29'29"	330.00	139.99	N 04°53'16" W
C6	153.88	24°29'29"	360.00	152.71	N 04°53'16" W

RECEIVED

APR 27 2001

Rapid City

City of Rapid City