

PLAT OF  
LOTS A & B OF LOT 3 OF BLOCK 1  
PARKRIDGE VILLAGE SUBDIVISION NO. 2

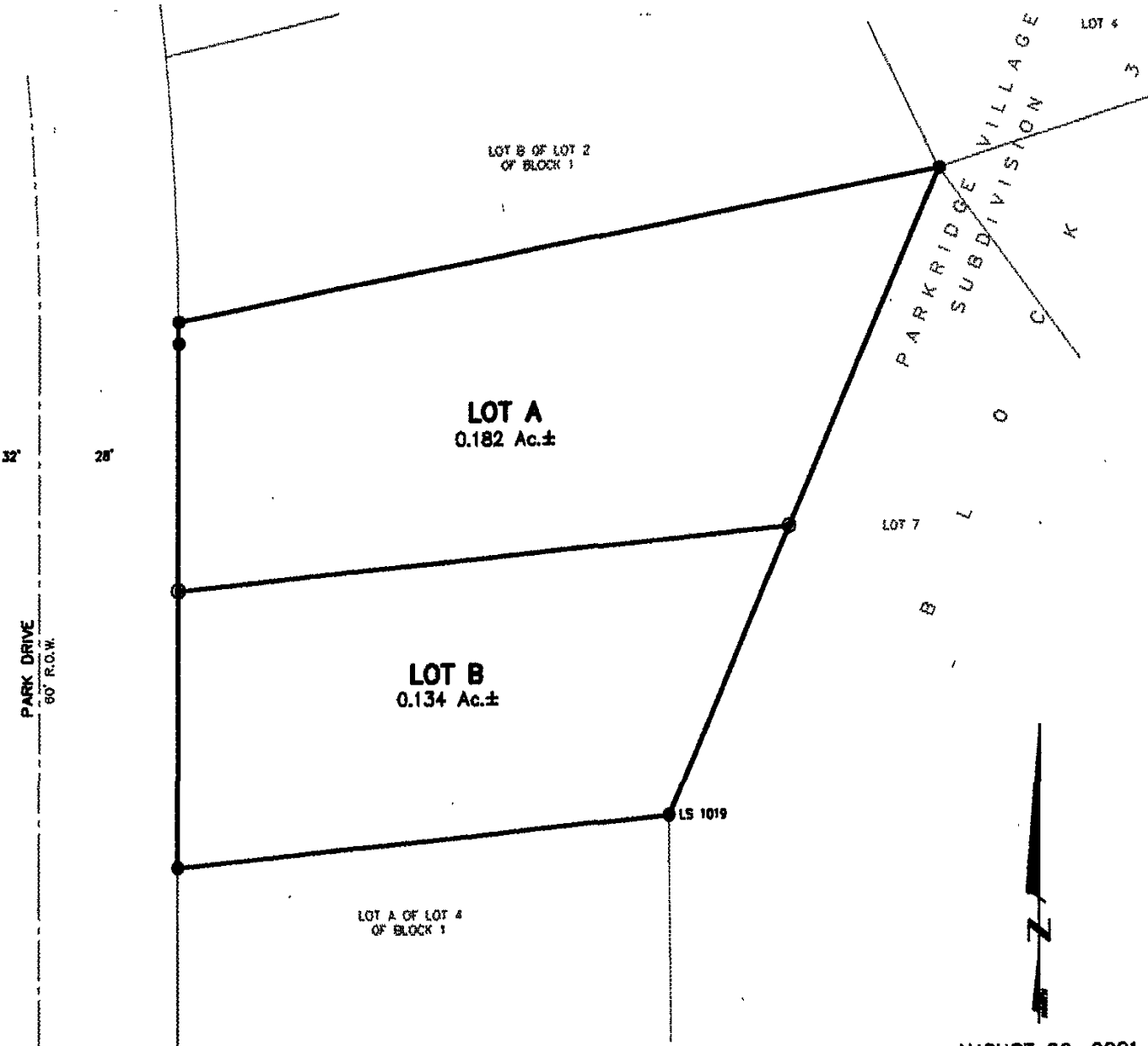
(formerly Lot 3 of Block 1 of Parkridge Village No. 2)

01PL085

LOCATED IN NW $\frac{1}{4}$  OF THE NE $\frac{1}{4}$

SECTION 16, T1N, R7E, BHM

RAPID CITY, PENNINGTON COUNTY, SOUTH DAKOTA



AUGUST 20, 2001



SCALE 1" = 30'



Renner & Sperlich Engineering Co.

616 Sixth St. • Rapid City, SD 57701 • 605/342-1191

FAX: 605/342-1405 • E-MAIL: RSECO@RAPIDNET.COM