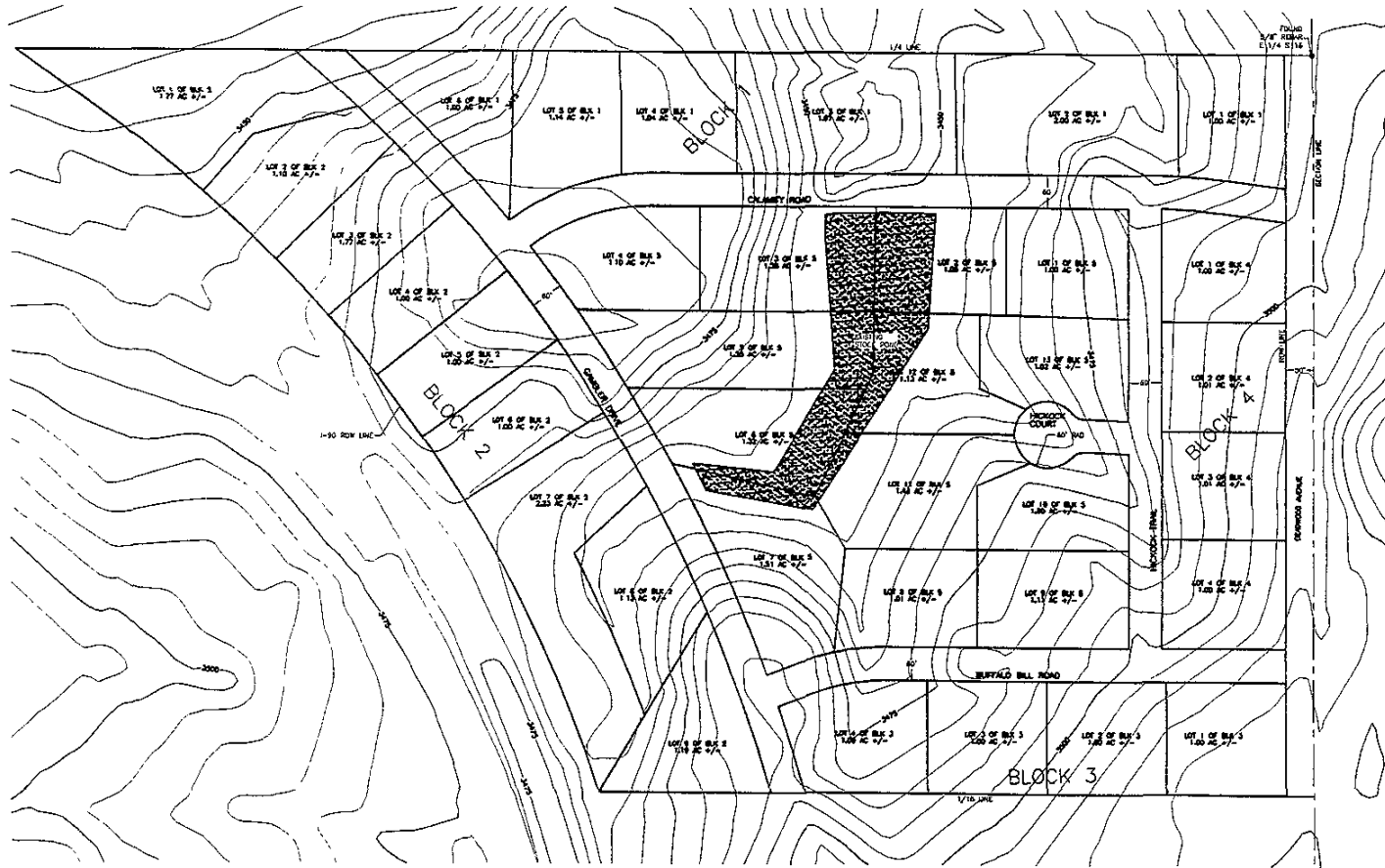


01PL081



NOTE
 1. EXISTING TOPOGRAPHY DEVELOPED FROM
 HORNBY & ASSOC. PLANT INFORMATION
 OBTAINED FROM THE CITY OF WARD CITY IN
 JUNE 2001.
 2. CONTOUR INTERVAL = 5'

FERRER ENGINEERING COMPANY CONSULTING ENGINEER AND LAND DEVELOPER 2400 S. 17TH AVENUE SUITE 100 DENVER, CO 80202 (303) 441-3511 * WATER RESOURCES DIVISION * * CIVIL ENGINEERING *		DATE: MAY 27, 2009 NO. 107 SCALE: 1" = 100' NOS. DRAWN: DRS CHECKED: BAH CHECKED: DPF
FARRAR BUSINESS PARK PROPOSED LAYOUT PLAN N1/2 SET 1/4 SECTION 16, T2N, R7E, S11W, PENNINGTON COUNTY		
PROJECT NO. J01-112		SHEET NO. 1/3