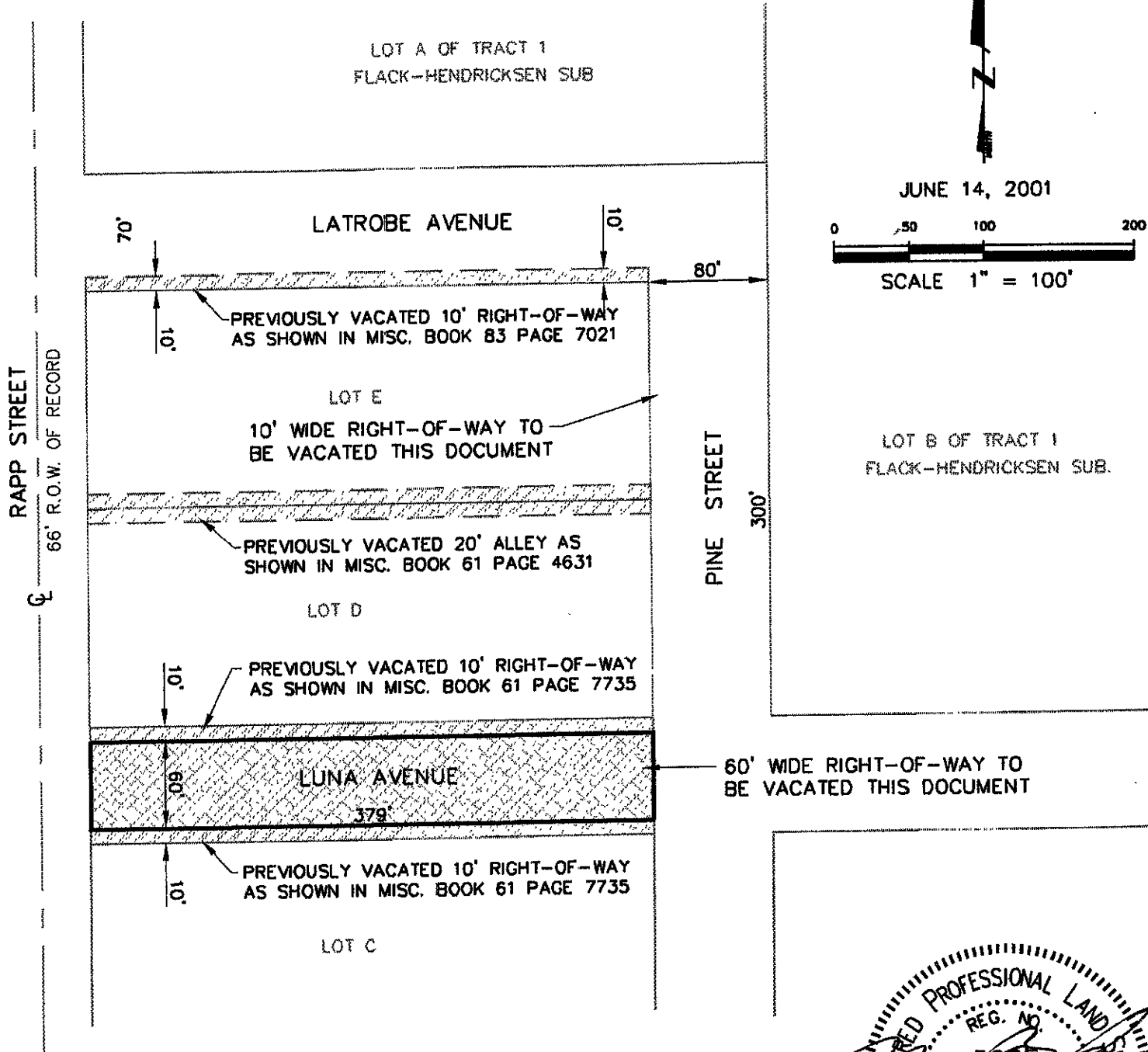


# VACATION OF RIGHT-OF-WAY A PORTION OF LUNA AVENUE

LOCATED IN THE NW1/4 OF THE SE1/4  
SECTION 30, T2N, R8E, BHM  
RAPID CITY, PENNINGTON COUNTY, SOUTH DAKOTA

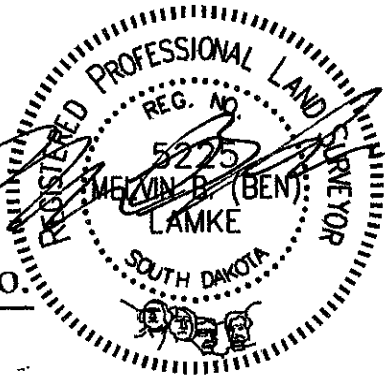


JUNE 14, 2001



SCALE 1" = 100'

LOT B OF TRACT 1  
FLACK-HENDRICKSEN SUB.



Renner & Sperlich Engineering Co.

616 Sixth St. • Rapid City, SD 57701 • 605/342-1191  
FAX: 605/342-1405 • E-MAIL: RSEC@RAPIDNET.COM