

01VR003

EXHIBIT A

VACATION OF RIGHT-OF-WAY A PORTION OF PINE STREET, LATROBE AVENUE, AND LUNA AVENUE

LOCATED IN THE NW1/4 OF THE SE1/4
SECTION 30, T2N, R8E, BHM
RAPID CITY, PENNINGTON COUNTY, SOUTH DAKOTA

LOT A OF TRACT 1
FLACK-HENDRICKSEN SUB.



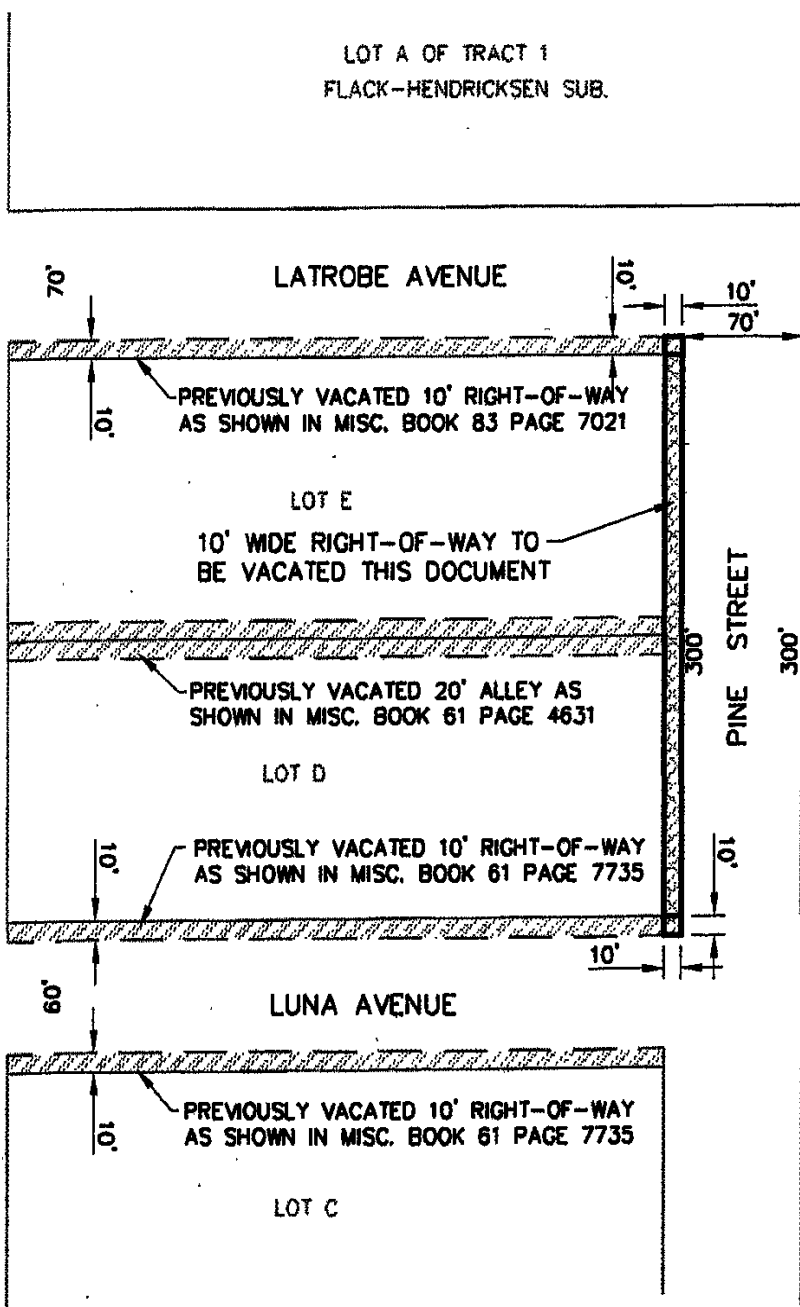
MAY 22, 2001



SCALE 1" = 100'

LOT B OF TRACT 1
FLACK-HENDRICKSEN SUB.

RAPP STREET
66' R.O.W. OF RECORD



LUNA AVENUE

LOT C



Renner & Sperlich Engineering Co.

616 Sixth St. • Rapid City, SD 57701 • 605/342-1191
FAX: 605/342-1405 • E-MAIL: RSEC@RAPIDNET.COM

