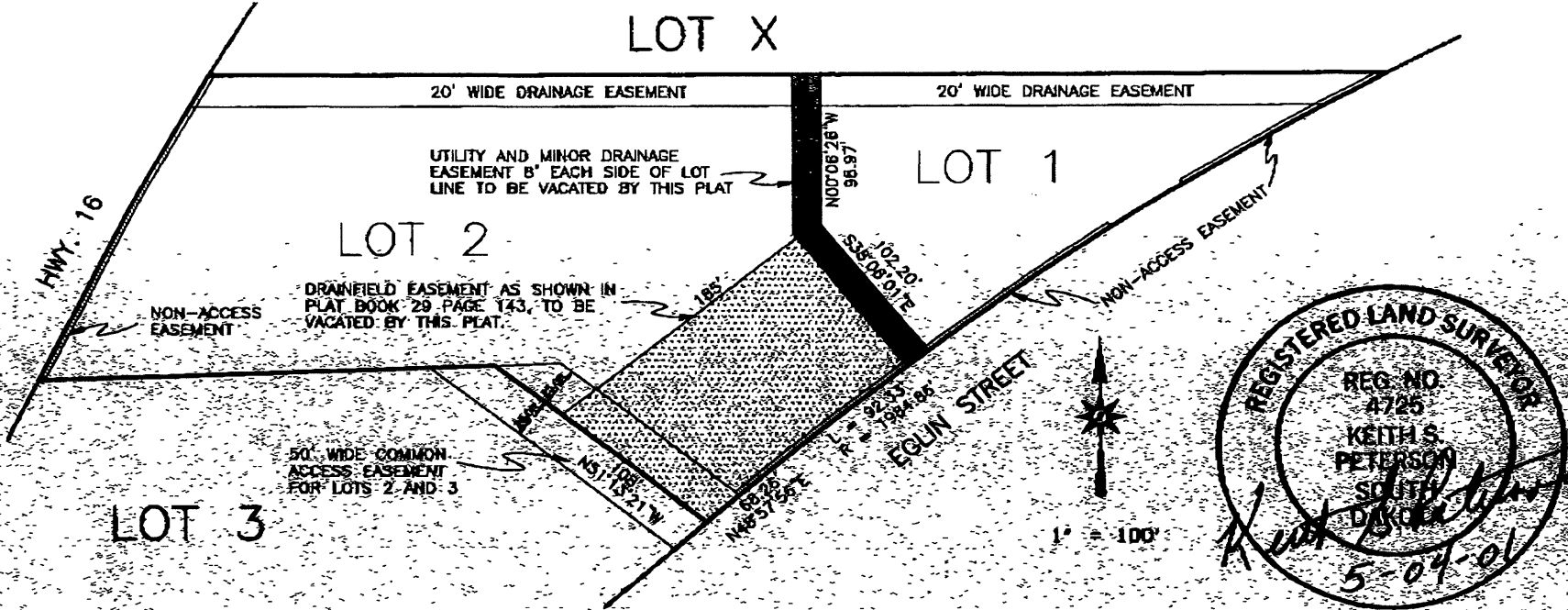


01VE006

EXHIBIT A

VACATION OF SIDE LOT LINE UTILITY AND MINOR DRAINAGE EASEMENTS BETWEEN LOTS 1 AND 2, AND THE UTILITY EASEMENT FOR DRAINFIELD ON LOT 2, ALL LOCATED IN CAREFREE SUBDIVISION, IN THE N1/2 OF THE NE1/4, SECTION 32, T2N, R8E, BHM, RAPID CITY PENNINGTON COUNTY, SOUTH DAKOTA.



TOTAL P. 02