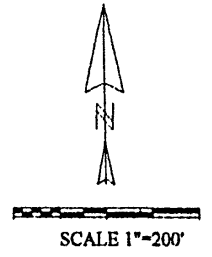
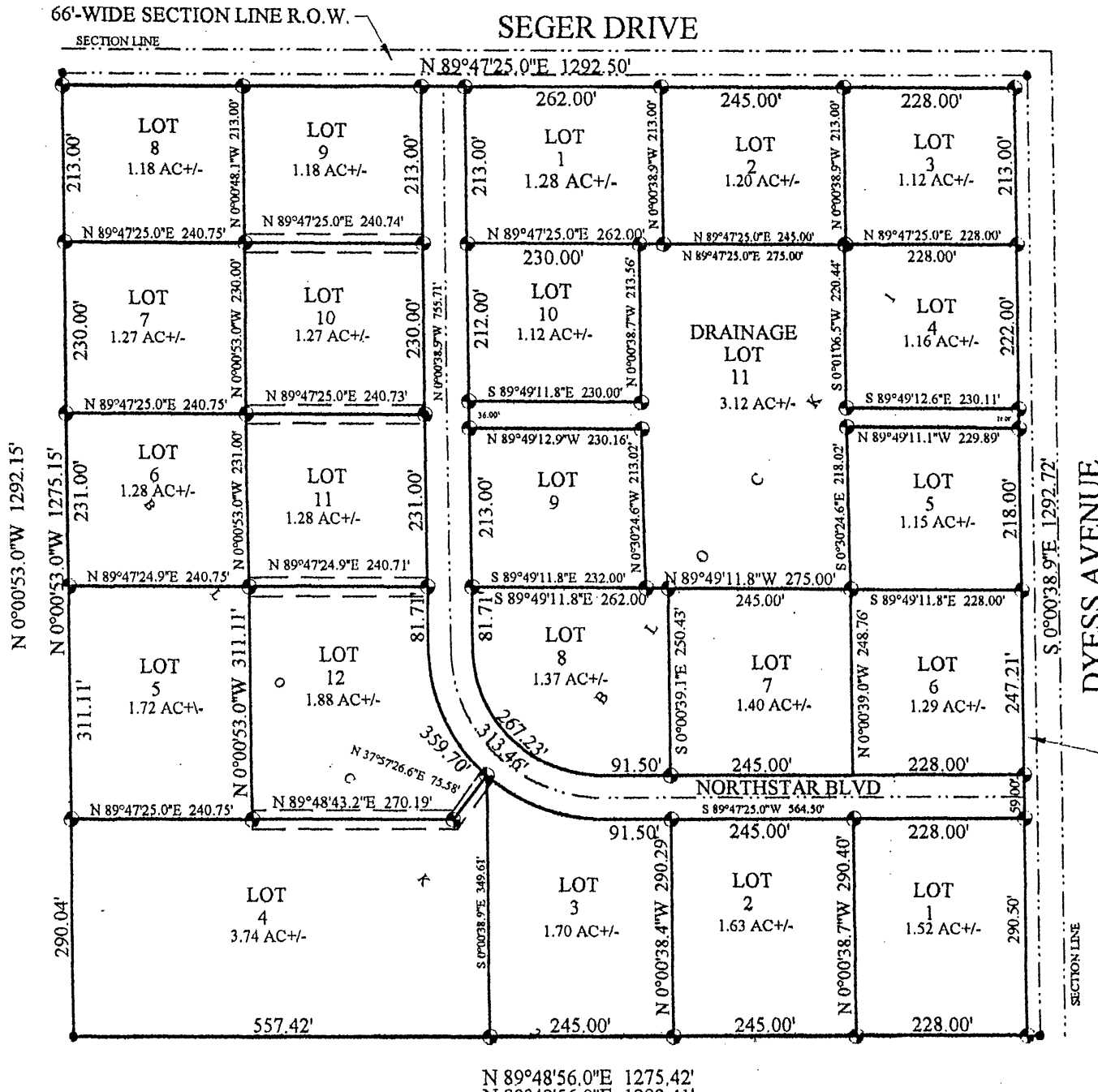


LOTS 1 THRU 10 AND DRAINAGE LOT 11 IN BLOCK 1 AND LOTS 1 THRU 12 IN BLOCK 2 OF NORTHSTAR INDUSTRIAL PARK SUBDIVISION LOCATED IN THE NE 1/4 OF THE NE 1/4 OF SECTION 29, T2N, R8E, B.H.M., PENNINGTON COUNTY, SOUTH DAKOTA.

01RZ046



25'-ACCESS, UTILITY AND DRAINAGE EASEMENTS TO BE CENTERED ON LOT LINES AS SHOWN ON LOTS 9,10,11,12 AND 4 THIS PLAT.

- LEGEND:
- (R)- RECORD OF PREVIOUS SURVEY.
 - (M)- MEASURED THIS SURVEY.
 - - FOUND SURVEY MONUMENT AS SHOWN.
 - ⊕ - SET REBAR W/CAP MARKED* P.L.S NO.4208*.

ANY MAJOR DRAINAGE EASEMENT SHOWN HEREON SHALL BE KEPT FREE OF ALL OBSTRUCTION, INCLUDING BUT NOT LIMITED TO BUILDINGS, WALLS, FENCES, HEDGES, TREES AND SHRUBS. THESE EASEMENTS GRANT TO ALL PUBLIC AUTHORITIES THE RIGHT TO CONSTRUCT, OPERATE, MAINTAIN, INSPECT, AND REPAIR SUCH IMPROVEMENTS AND STRUCTURES AS IT DEEMS