

# PRELIMINARY PLAT OF MINNESOTA RIDGE SUBDIVISION

TRACT A, TRACT B, TRACT C, LOTS 1 THRU 24  
 AND R.O.W. OF ALTA VISTA DRIVE, MIDDLE VALLEY DRIVE, MISSING RIDGE ROAD AND RECLUSE COURT  
 FORMERLY TRACT C AND BLOCK 27 OF ROBBINSDALE NO. 10  
 LOCATED IN THE NW 1/4 OF THE SE 1/4 OF SECTION 13, T9N, R7E, B.H.M.  
 RAPID CITY, PENNINGTON COUNTY, SOUTH DAKOTA

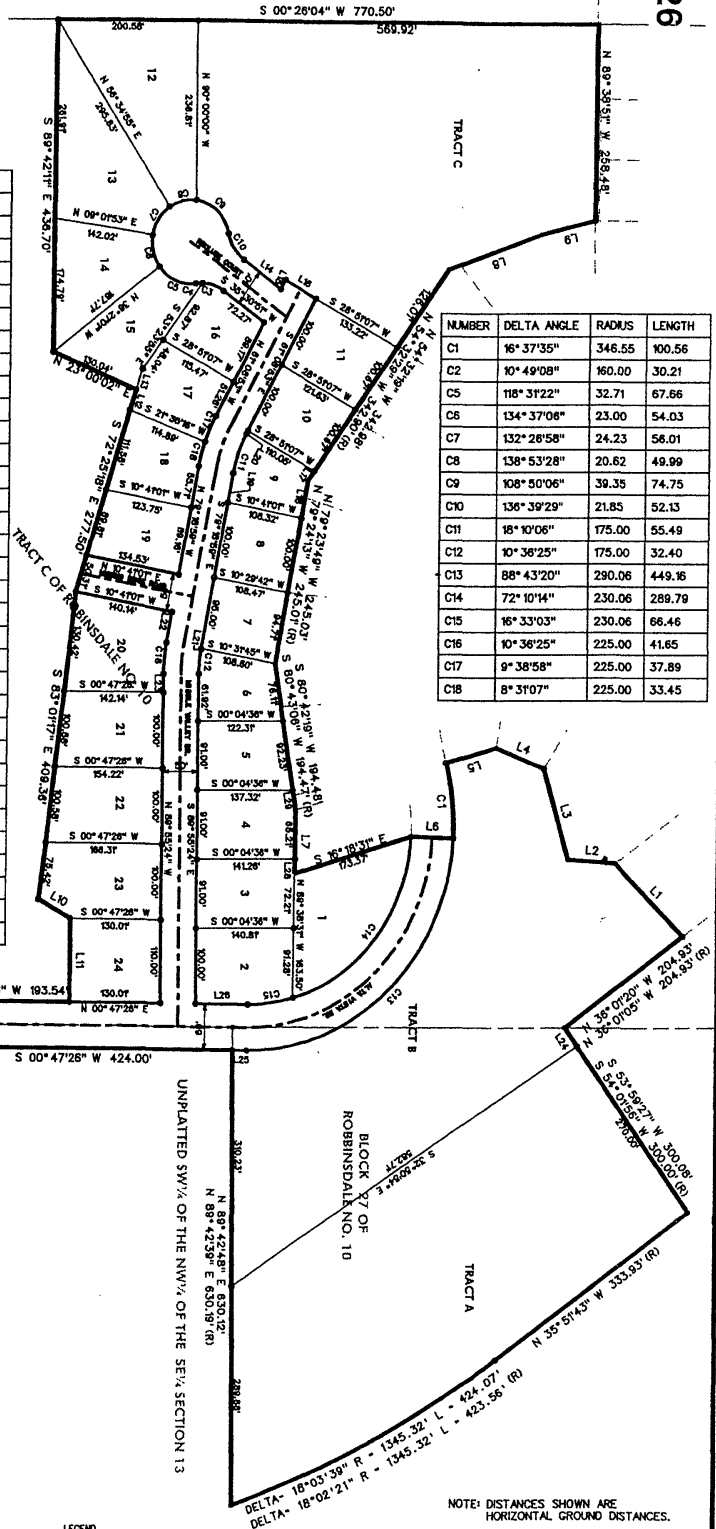
01PL026

SHEET 1 OF 2

01PL075

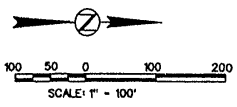
NUMBER	DIRECTION	DISTANCE
L1	S 44° 49' 10" W	136.47'
L1 (R)	S 44° 49' 26" W	136.43'
L2	S 04° 17' 09" W	66.89'
L2 (R)	S 04° 09' 06" W	66.67'
L3	N 73° 55' 47" E	124.89'
L3 (R)	N 73° 54' 48" E	124.89'
L4	S 22° 14' 07" W	72.57'
L5	S 16° 07' 31" E	73.22'
L6	N 02° 03' 58" E	60.00'
L7	N 89° 38' 31" W	84.00'
L8	N 19° 35' 32" W	137.65'
L8 (R)	N 19° 36' 02" W	137.66'
L9	N 13° 18' 29" W	77.63'
L9 (R)	N 13° 22' 02" W	77.68'
L10	N 29° 29' 36" E	52.08'
L11	S 89° 55' 24" E	110.00'
L12	N 21° 35' 16" E	114.91'
L13	S 72° 25' 18" E	28.88'
L14	S 35° 30' 50" W	66.43'
L15	S 61° 08' 53" E	14.11'
L16	S 28° 51' 07" W	50.00'
L17	S 54° 32' 19" E	15.63'
L18	N 79° 23' 49" W	50.33'
L19	N 79° 18' 59" W	39.63'
L20	S 61° 08' 53" E	4.88'
L21	N 79° 18' 59" W	0.68'
L22	N 79° 18' 59" W	40.44'
L24	S 53° 59' 27" W	30.08'
L25	S 00° 47' 28" W	21.34'
L26	S 00° 47' 28" W	74.72'
L27	S 89° 49' 35" E	30.00'
L28	N 89° 38' 31" W	18.79'
L29	S 80° 42' 19" W	26.34'

NUMBER	DELTA ANGLE	RADIUS	LENGTH
C1	16° 37' 35"	346.55	100.56
C2	10° 49' 08"	160.00	30.21
C5	118° 31' 22"	32.71	67.66
C6	134° 37' 08"	23.00	54.03
C7	132° 28' 58"	24.23	56.01
C8	138° 53' 28"	20.62	49.99
C9	108° 50' 06"	39.35	74.75
C10	136° 39' 29"	21.85	52.13
C11	18° 10' 06"	175.00	55.49
C12	10° 36' 25"	175.00	32.40
C13	88° 43' 20"	230.06	449.16
C14	72° 10' 14"	230.06	289.79
C15	16° 33' 03"	230.06	66.46
C16	10° 36' 25"	225.00	416.65
C17	9° 38' 58"	225.00	37.89
C18	8° 31' 07"	225.00	33.45



- LEGEND**
- FOUND PROPERTY CORNER
  - SET NO. 5 RESUR/PLASTIC CAP "A.A.E. LS 8014"
  - ⊞ RECORD DIMENSION IF DIFFERENT THAN MEASURED

NOTE: DISTANCES SHOWN ARE HORIZONTAL GROUND DISTANCES.



Plat prepared by:  
 Alliance of Architects and Engineers  
 706 West Boulevard  
 Rapid City, South Dakota  
 Phone: 605 342-9470

