

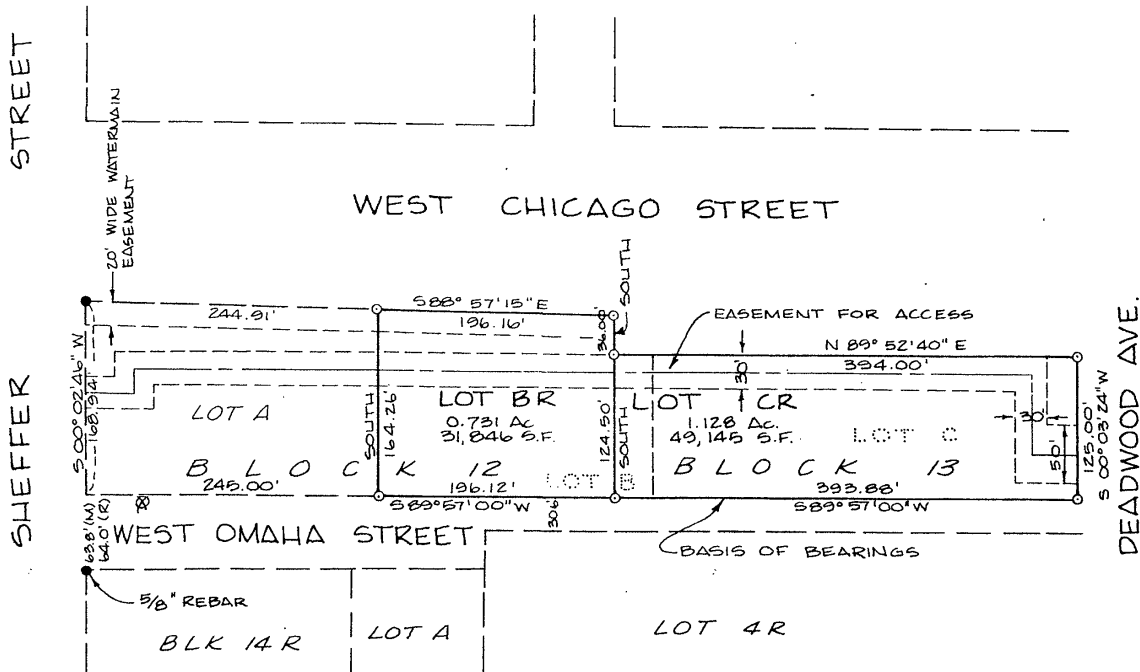
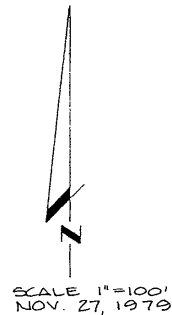
REPLAT OF A PORTION OF PROVIDENCE ADDITION IN THE CITY OF RAPID CITY, INCLUDING:

LOTS BR & CR OF BLOCKS 12 & 13 OF PROVIDENCE ADDITION (formerly Lots B & C of Blocks 12 & 13)  
LOCATED IN  
SW<sup>1</sup>/<sub>4</sub> OF SE<sup>1</sup>/<sub>4</sub> OF SECTION 34, T2N, R7E, BHM,  
RAPID CITY, PENNINGTON COUNTY, SOUTH DAKOTA

NOTICE OF HEARING MAY BE SENT TO:

D.J. Wieseler, Partner  
P.O. Box 163  
Rapid City, SD 57709

01UR025



NOTES:

- Denotes set 5/8" rebar with survey cap marked "Francis-Meador 1019."
- Denotes "Found Survey Monument" (5/8" rebar with survey cap marked "Francis-Meador 1019" unless otherwise noted).

Basis of Bearings: As shown hereon.

All drainage easements shown hereon shall be kept free of all obstructions including but not limited to buildings, walls, fences, hedges, trees, and shrubs. These easements grant to all public authorities the right to construct, operate, maintain, inspect, and repair such improvements and structures as it deems expedient to facilitate drainage from any source.

This plat includes the replat of Lots B & C of Blocks 12 & 13 of Providence Addition, which are being vacated in whole by this plat. Plat of said Lots B & C to be vacated is filed in Plat Book No. 17, Page 27, in the office of the Pennington County Register of Deeds.

