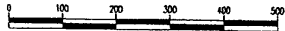


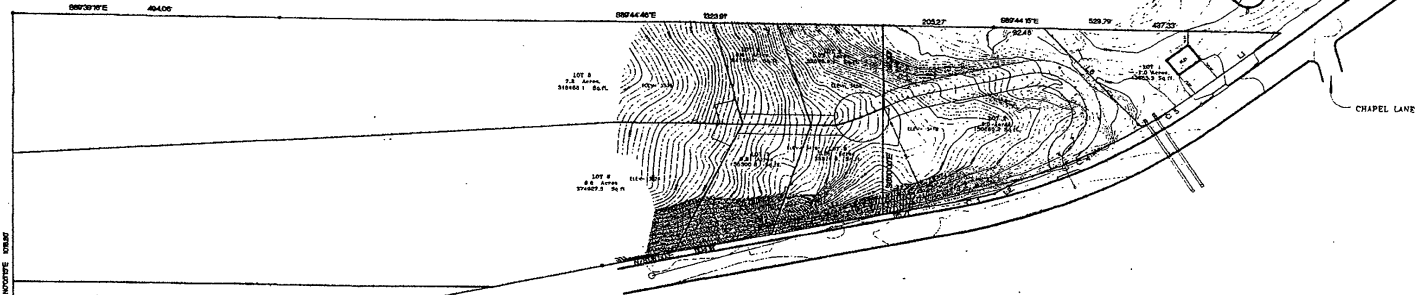
1" = 100'  
(HORIZONTALS)



MASTER PLAN

LOT AREAS AND CONFIGURATIONS MAY BE MODIFIED BASED ON FINAL DESIGN.  
 LOT 1 SHALL HAVE A MAJOR HOME OCCUPATION UNPLATTED BALANCE TO BE CONSOLIDATED WITH ADJOINING LOT 13.

LOT F-1  
 26.2 Acres.  
 1142285.6 Sq.ft.



NUM	DELTA	ARC	RADIUS	BEARING	DISTANCE
C1	4'52'24"	94.32'	1108.92'	N76°17'45"E	94.29'
C2	37'46'31"	564.04'	855.51'	S59°53'46"W	553.88'
C3	3'49'58"	58.10'	868.51'	S30°48'51"W	58.09'
C4	13'25'44"	256.86'	1095.92'	N63°59'52"E	256.28'
C5	5'47'30"	110.78'	1095.92'	N54°23'15"E	110.73'

NUM	DISTANCE	BEARING
L1	210.39'	S51°31'28"W
L2	52.33'	S57°39'15"W
L3	107.57'	S44°30'24"W
L4	20.50'	S29°16'20"W
L5	53.46'	S89°35'12"W
L6	268.89'	S42°46'16"E

PROJECT No. 01-01-02  
 100 MAIN STREET, P.O. BOX 8144  
 RAPID CITY, SOUTH DAKOTA 57509  
 (605) 346-5338 FAX (605) 341-1112

DESIGNED BY: [blank]  
 CHECKED BY: [blank]  
 DATE: 12/20/01

**PISK LAND SURVEYING,**  
 AND CONSULTING ENGINEERS

BOUNDARY SURVEY AND TOPOGRAPHICAL MAP  
 LOT F-1 OF PISH HATCHERY SUBDIVISION  
 RAPID CITY, PENNINGTON COUNTY, SOUTH DAKOTA  
 FOR JOHN SKULBORSTAD