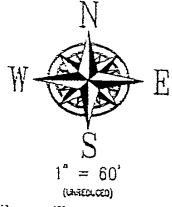
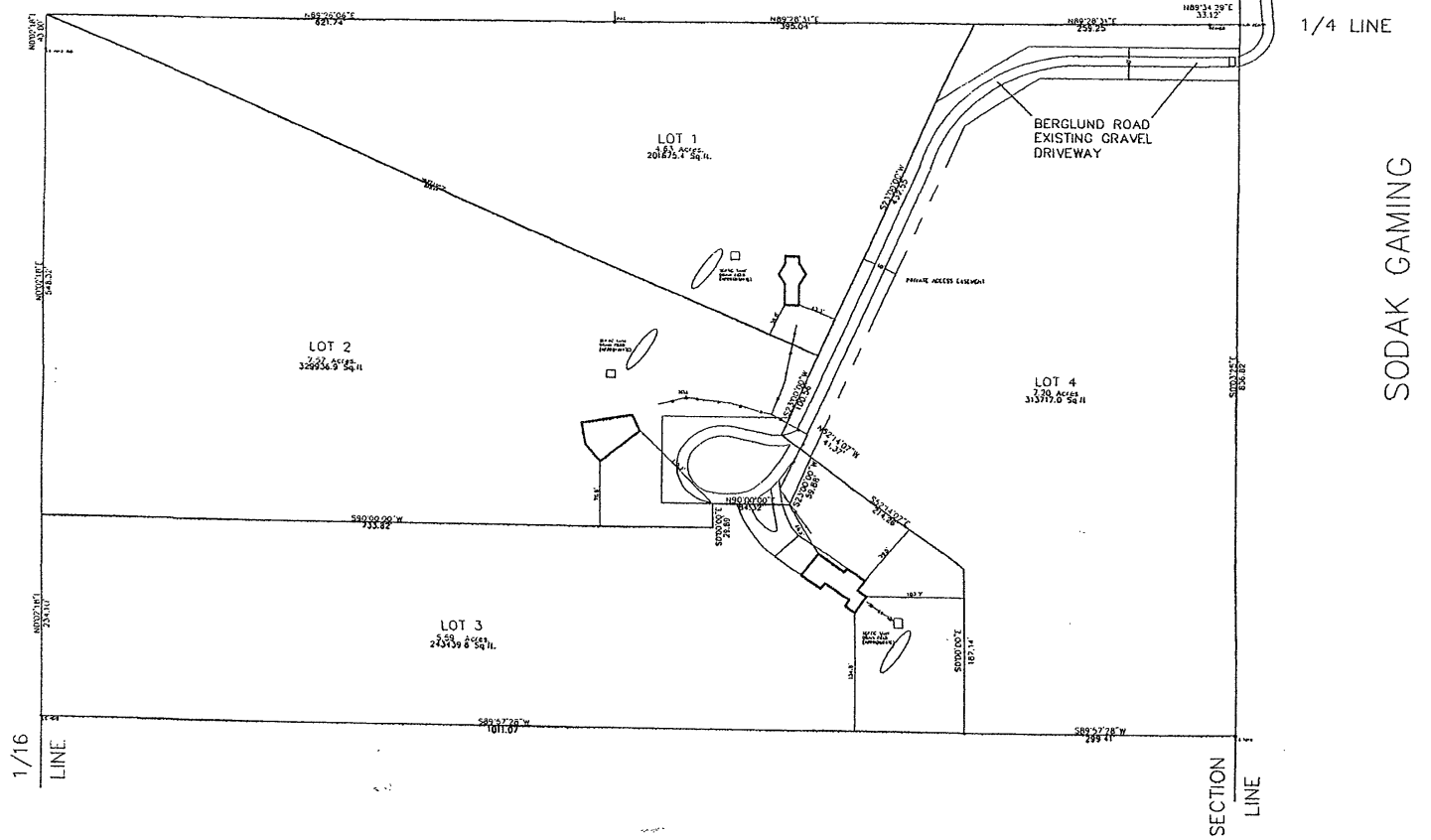


01SV009



TRACT 1 KOVARIK SUBDIVISION



SODAK GAMING

LAYOUT PLAT OF LOTS 1-4 OF SQUIRRELY ACRES LOCATED IN NE 1/4 SE 1/4 OF SECTION 22 T1N, R7E, BHM RAPID CITY, PENNINGTON COUNTY, SOUTH DAKOTA		PREPARED BY: H CHECKED BY: WF DATE: 5/1/00 FSK LAND SURVEYING AND CONSULTING ENGINEERS, INC.
REVISIONS NO. 01-12-00 1058 MAIN STREET, P.O. BOX 2154 RAPID CITY, SOUTH DAKOTA 57709 (605) 346-1538 FAX (605) 343-1112		