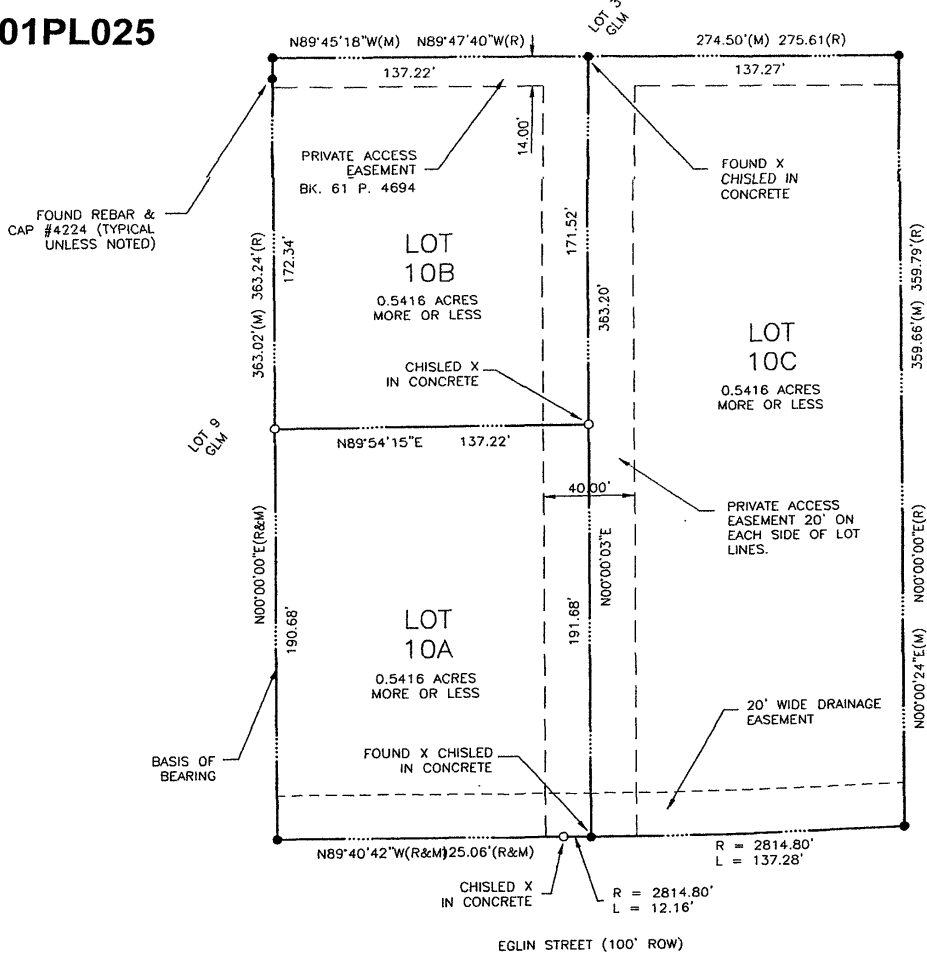


PLAT OF LOTS 10A, 10B, AND 10C, OF THE GLM SUBDIVISION
 FORMERLY LOT 10 OF THE GLM SUBDIVISION, LOCATED IN THE SW1/4 OF THE SW1/4 OF
 SECTION 28, T2N, R8E, B.H.M., RAPID CITY, PENNINGTON COUNTY, SOUTH DAKOTA

01PL025



March 12, 2001



SCALE : 1" = 40'

- FOUND SURVEY MONUMENT
- O SET MONUMENT
- R RECORD MEASUREMENT
- M MEASURED THIS SURVEY

PLAT PREPARED BY:
 PINHOLT LAND SURVEYING
 P.O. BOX 704
 RAPID CITY, S.D. 57709
 (605) 394-7703

Utility and minor drainage easements: B' on the interior sides of all lot lines.
 All major drainage easements shown hereon shall be kept free of all obstructions including, but not limited to buildings, walls, fences, hedges, trees and shrubs. These easements grant to all public authorities the right to construct, operate, maintain, inspect and repair such improvements and structures as it deems expedient to facilitate drainage from any source