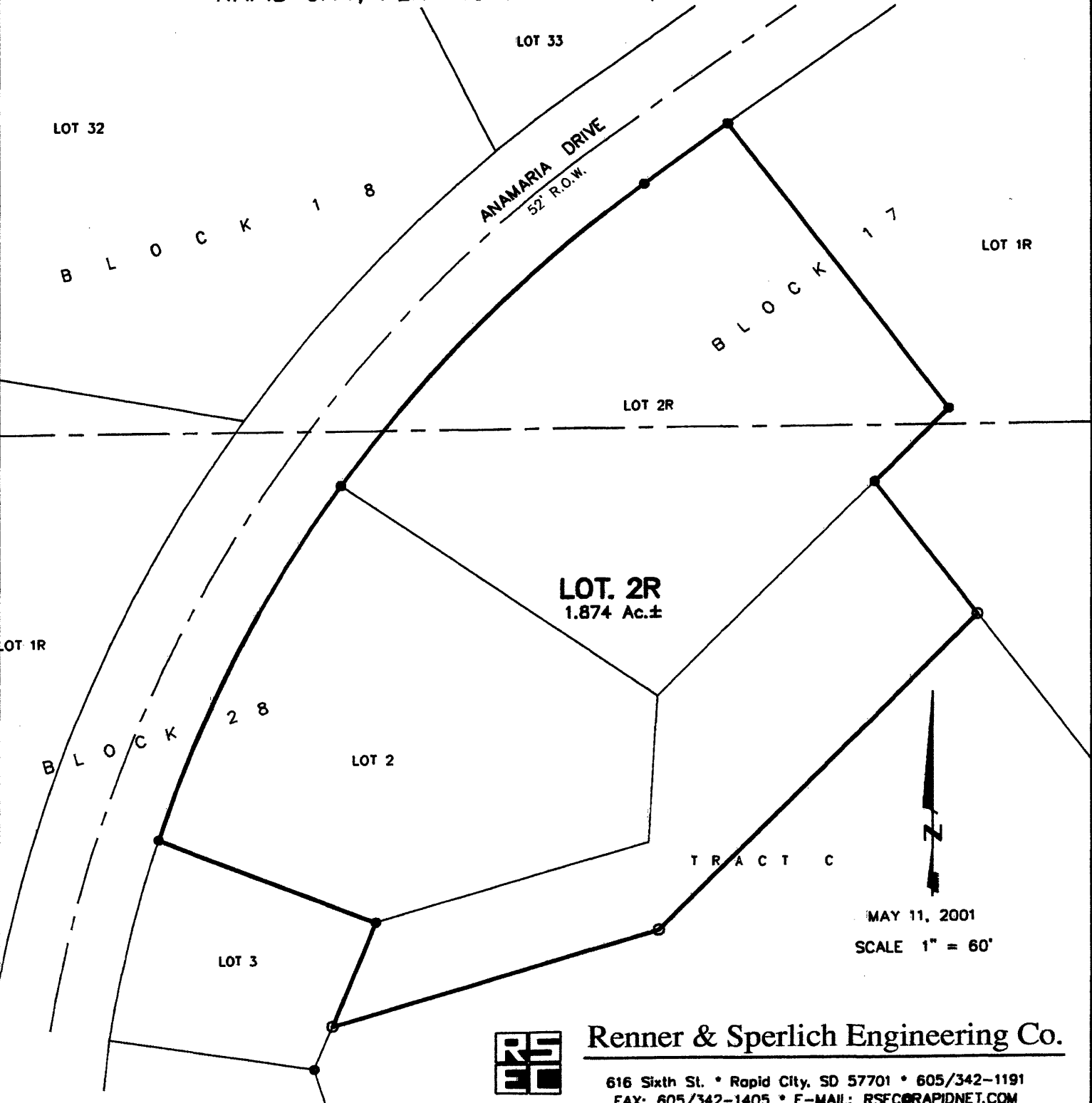


01PD023

PLAT OF
**LOT 2R OF BLOCK 28
OF ROBBINSDALE ADDITION NO. 10**

(formerly Lot 2 of Block 28, Lot 2R of Block 17 and a portion of
Tract C all in Robbinsdale Addition No. 10)
LOCATED IN THE NE¹/₄ OF THE SW¹/₄ AND IN THE SE¹/₄ OF THE NW¹/₄
SECTION 13, T1N, R7E, BHM
RAPID CITY, PENNINGTON COUNTY, SOUTH DAKOTA



Renner & Sperlich Engineering Co.

616 Sixth St. • Rapid City, SD 57701 • 605/342-1191
FAX: 605/342-1405 • E-MAIL: RSEC@RAPIDNET.COM

MAY 11, 2001
SCALE 1" = 60'