

"A"

225

1-001
24.60

37-228

700

800

B

700

PI 2R2
PI 37-22-251-004
PI 9.18

22 IN

226

15.2-004

3.05

"R"

18-4-005

3.04

"D"

PI 007

PI 007

C

PI 1R

PI 001

PI 5.90

507

25.00

-011

15.04

-004

12.13

E

009

1.00

300

-011

70.61

400

012

7.75

-009

54.00

-010

13.34

GOLDEN EAGLE DR.

-003

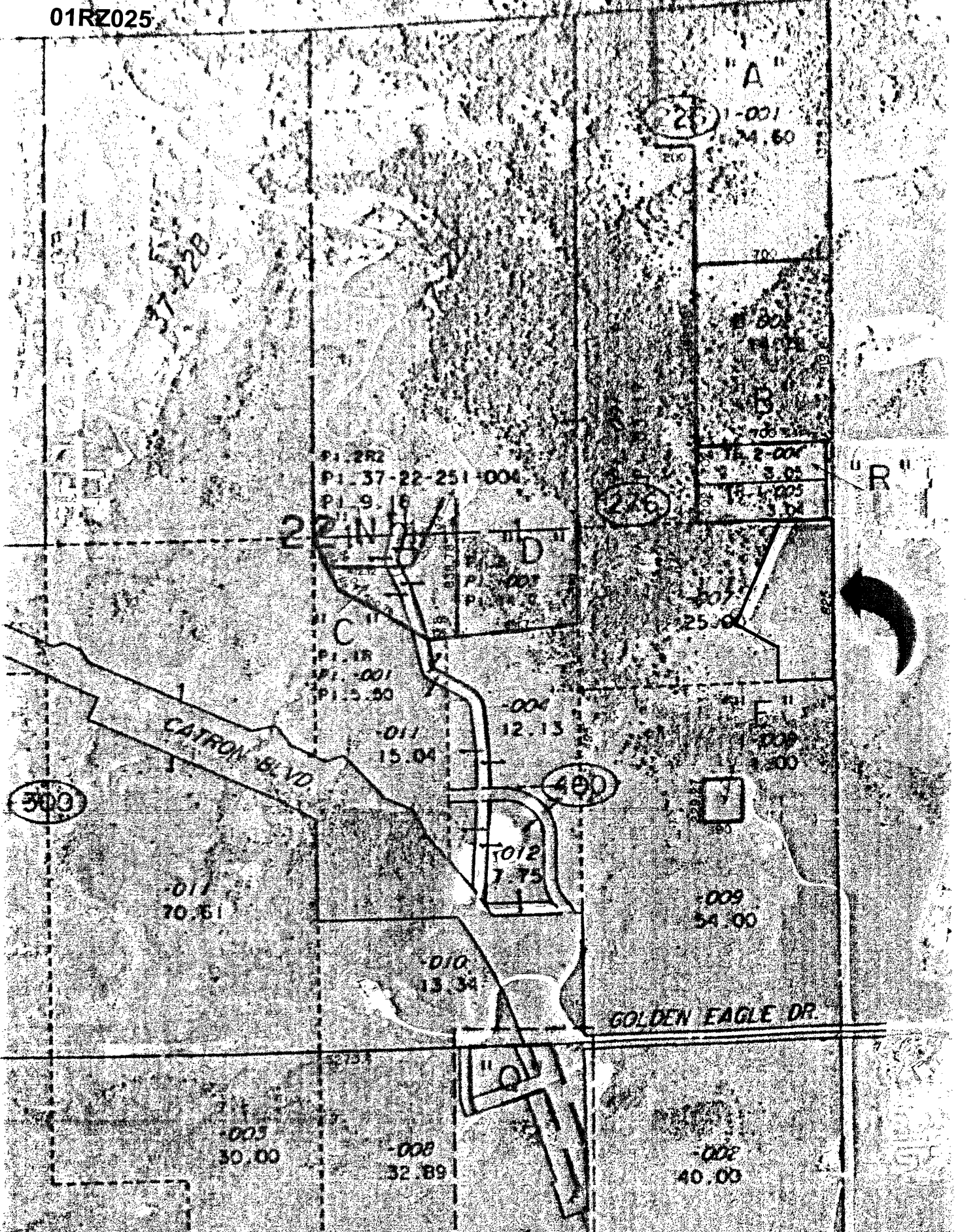
30.00

-008

32.89

-008

40.00



37-228

"A"
-001
24.60

P1-2R2
P1-37-22-251-004
P1-9.18

700
-002
3.05
-003
3.04

2

225

"R"

C II
P1-1R
P1-001
P1-2.50

D II
P1-001
P1-12.7

-007
25.00

CATRON BLVD.

-004
12.13
-011
15.04

E II
P1-001
P1-3.00

300

400

-011
70.61

R012
7.75

-009
54.00

-010
13.34

GOLDEN EAGLE DR.

-005
30.00

-008
32.89

-002
40.00

