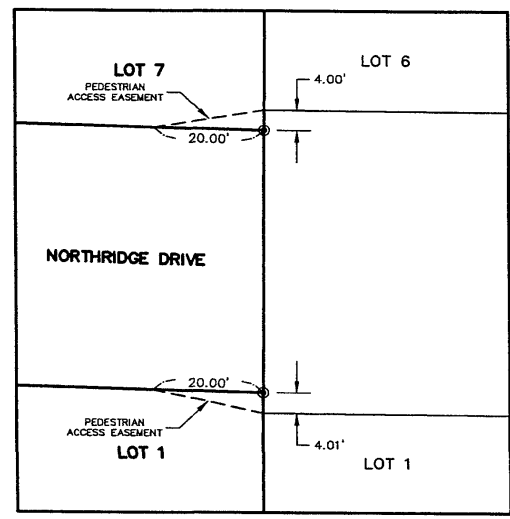
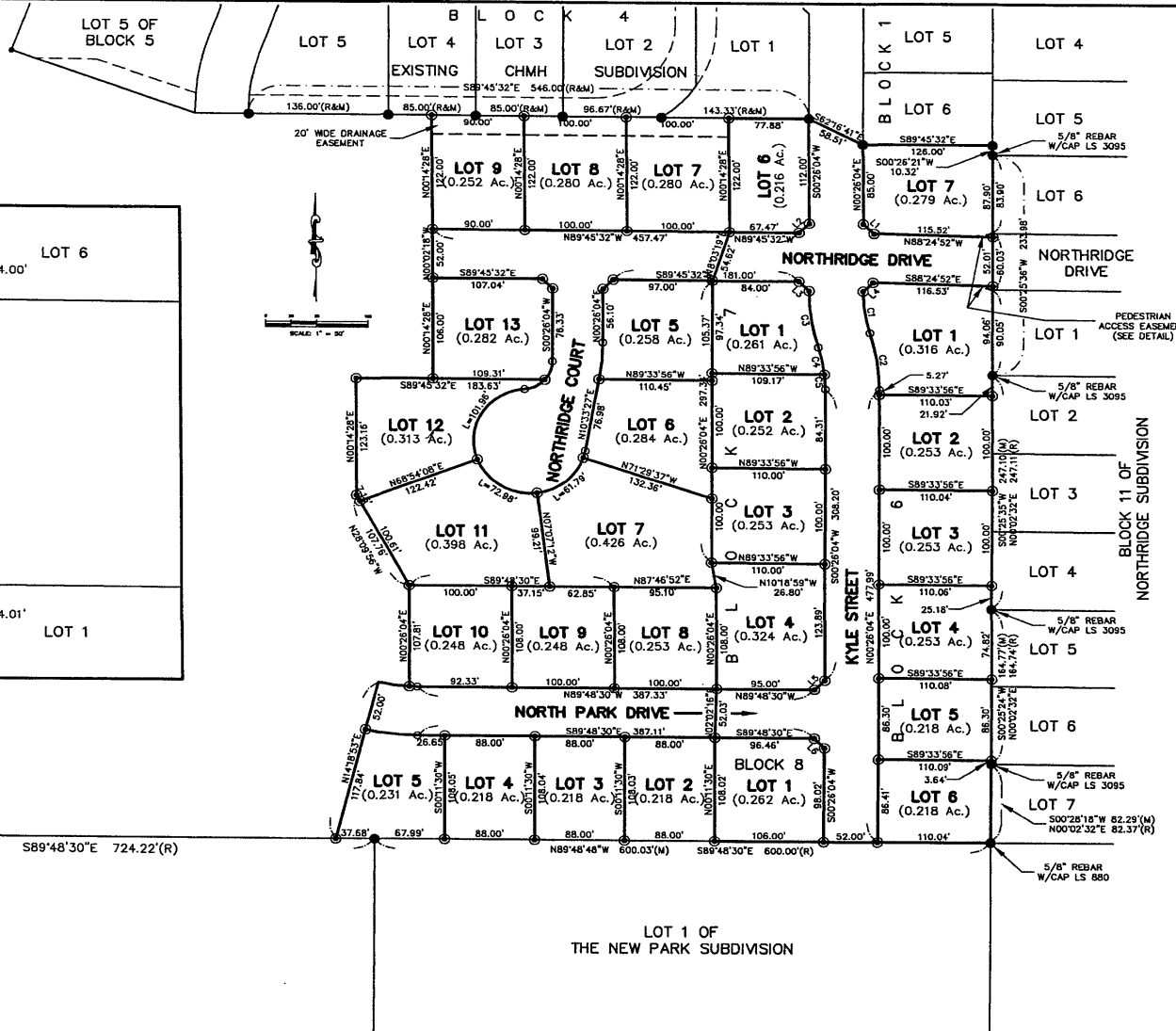


01PL029



DETAIL
NOT TO SCALE

N89°48'15"W 724.33'(M) S89°48'30"E 724.22'(R)



LOT 1 OF
THE NEW PARK SUBDIVISION

F M G, Inc.
2500 13th Street, Rapid City, SD 57702-2817
(605) 342-4108 FAX: (605) 342-4222



PRO File No.: 2013.02
Location:
Date:
Drawn By:
Checked By:

CHMH SUBDIVISION
PRELIMINARY PLAT
RAPID CITY, SOUTH DAKOTA

Revision / Date
Sheet Name:
PRELIMINARY PLAT
Sheet Number:
1
Total Sheets:
1