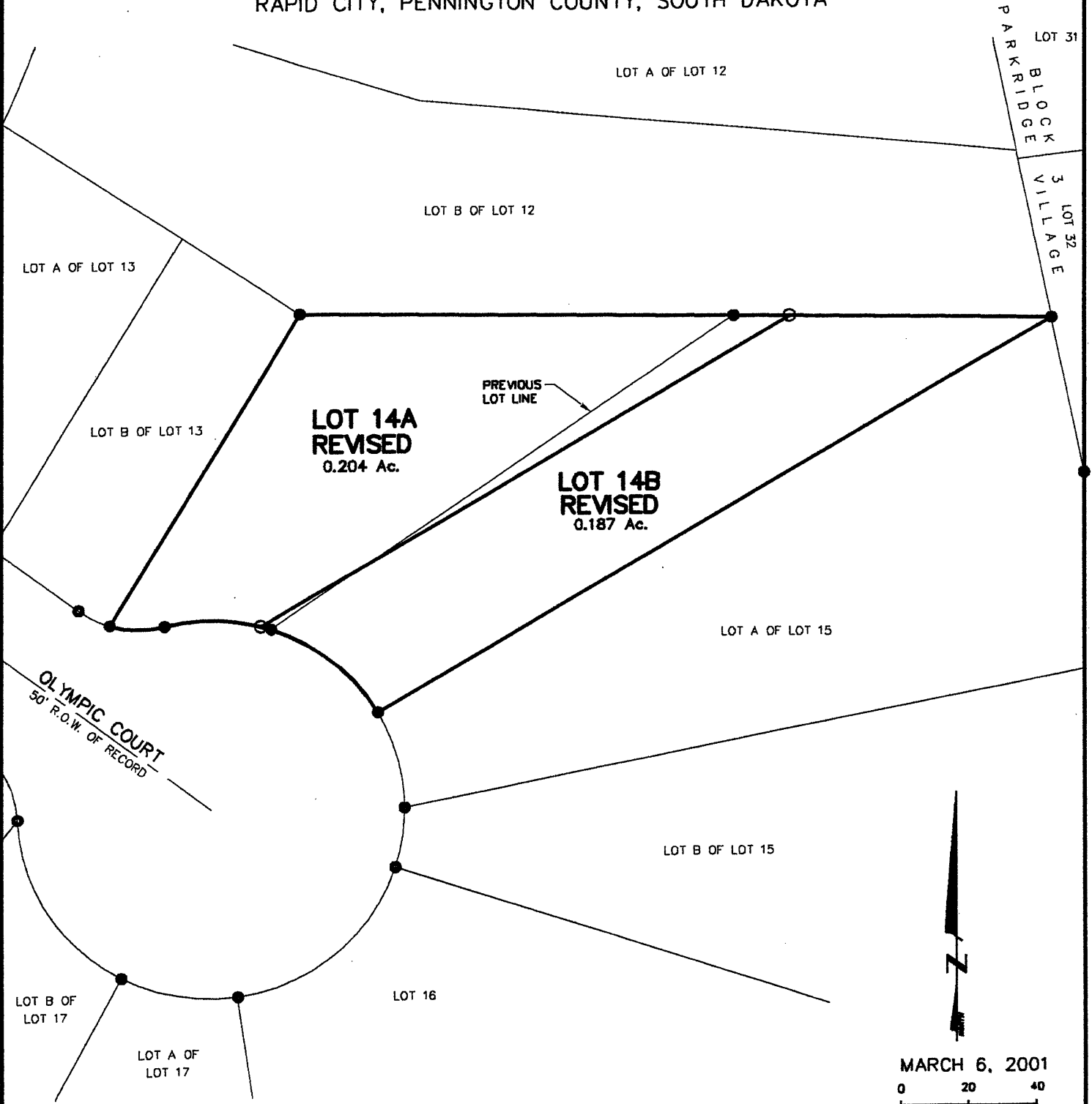


PLAT OF
**LOT 14A REVISED AND LOT 14B REVISED OF BLOCK 1
PARKRIDGE VILLAGE SUBDIVISION NO. 2**

(formerly Lot 14A & Lot 14B of Block 1 of Parkridge Village No. 2)

01PL017

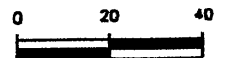
LOCATED IN THE SW1/4 OF THE NE1/4
SECTION 16, T1N, R7E, BHM
RAPID CITY, PENNINGTON COUNTY, SOUTH DAKOTA



PARKRIDGE
BLOCK
3
VILLAGE
LOT 31
LOT 32



MARCH 6, 2001



SCALE 1" = 40'



Renner & Sperlich Engineering Co.

616 Sixth St. • Rapid City, SD 57701 • 605/342-1191
FAX: 605/342-1405 • E-MAIL: X19FIAT@AOL.COM