

01SV007

PLAT OF VALLEY RIDGE SUBDIVISION PHASE VI containing
 LOT 19, 20, 21, 22, 23, 24, 25, BLOCK 6 AND LOT 8, 9, 10, 11, 12, 13, 14, BLOCK 7
 AND LOT 1, 2, 3, 4, 5, BLOCK 8 AND LOT 1, 2, 3, 4, 5, 6, 7, 8, BLOCK 9 AND
 LOT 1, 2, 3, 4, 5, 6, 7, BLOCK 10 AND DEDICATED STREETS.
 Located in NE 1/4 of SE 1/4 of Section 3, T14, R1E, S04.
 Pennington County, South Dakota.

PAGE 1 of 2

UNPLATTED

NOTE

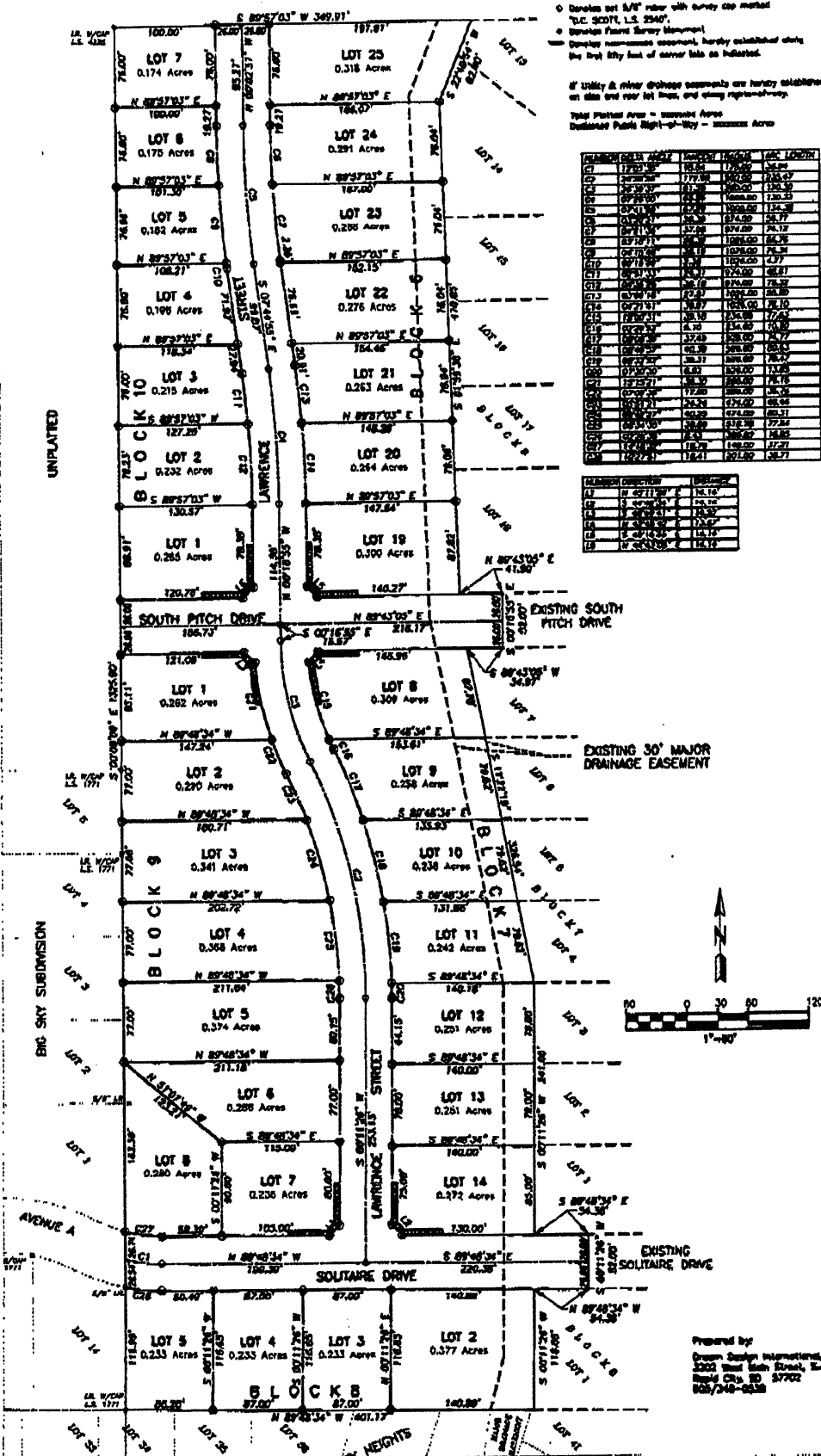
- Broken out 1/4" with survey cap marked "C. 2001, L.S. 2340"
- Broken Forest Survey Monument
- Deprecy easement, hereby established along the first fifty feet of corner line as indicated.

If utility & other @/shape easements are hereby established on this and rear lot lines, and along right-of-way.

Total Platted Area = **100.00 Acres**
 Deducted Public Right-of-Way = **10.00 Acres**

Block/Lot	Area (Acres)	Area (Sq Ft)	Area (Sq Ft)	Area (Sq Ft)
Block 6 Lot 1	0.263	113,200	113,200	113,200
Block 6 Lot 2	0.252	109,000	109,000	109,000
Block 6 Lot 3	0.215	93,000	93,000	93,000
Block 6 Lot 4	0.199	87,000	87,000	87,000
Block 6 Lot 5	0.162	70,000	70,000	70,000
Block 6 Lot 8	0.175	76,000	76,000	76,000
Block 6 Lot 7	0.174	75,000	75,000	75,000
Block 6 Lot 23	0.205	90,000	90,000	90,000
Block 6 Lot 24	0.291	126,000	126,000	126,000
Block 6 Lot 25	0.318	138,000	138,000	138,000
Block 7 Lot 1	0.300	130,000	130,000	130,000
Block 7 Lot 2	0.254	110,000	110,000	110,000
Block 7 Lot 3	0.263	113,000	113,000	113,000
Block 7 Lot 4	0.276	120,000	120,000	120,000
Block 7 Lot 5	0.205	90,000	90,000	90,000
Block 7 Lot 8	0.291	126,000	126,000	126,000
Block 7 Lot 9	0.205	90,000	90,000	90,000
Block 7 Lot 10	0.263	113,000	113,000	113,000
Block 7 Lot 11	0.276	120,000	120,000	120,000
Block 7 Lot 12	0.205	90,000	90,000	90,000
Block 7 Lot 13	0.205	90,000	90,000	90,000
Block 7 Lot 14	0.205	90,000	90,000	90,000
Block 7 Lot 19	0.300	130,000	130,000	130,000
Block 7 Lot 20	0.254	110,000	110,000	110,000
Block 7 Lot 21	0.263	113,000	113,000	113,000
Block 7 Lot 22	0.276	120,000	120,000	120,000
Block 7 Lot 23	0.205	90,000	90,000	90,000
Block 7 Lot 24	0.291	126,000	126,000	126,000
Block 7 Lot 25	0.318	138,000	138,000	138,000
Block 8 Lot 1	0.262	113,000	113,000	113,000
Block 8 Lot 2	0.220	95,000	95,000	95,000
Block 8 Lot 3	0.341	147,000	147,000	147,000
Block 8 Lot 4	0.308	134,000	134,000	134,000
Block 8 Lot 5	0.374	164,000	164,000	164,000
Block 8 Lot 6	0.286	125,000	125,000	125,000
Block 8 Lot 7	0.256	111,000	111,000	111,000
Block 8 Lot 8	0.309	135,000	135,000	135,000
Block 8 Lot 9	0.238	104,000	104,000	104,000
Block 8 Lot 10	0.234	102,000	102,000	102,000
Block 8 Lot 11	0.242	105,000	105,000	105,000
Block 8 Lot 12	0.201	88,000	88,000	88,000
Block 8 Lot 13	0.261	110,000	110,000	110,000
Block 8 Lot 14	0.272	118,000	118,000	118,000
Block 9 Lot 1	0.377	165,000	165,000	165,000
Block 9 Lot 2	0.377	165,000	165,000	165,000
Block 9 Lot 3	0.233	101,000	101,000	101,000
Block 9 Lot 4	0.233	101,000	101,000	101,000
Block 9 Lot 5	0.233	101,000	101,000	101,000

Block/Lot	Area (Acres)	Area (Sq Ft)
Block 6 Lot 1	0.263	113,200
Block 6 Lot 2	0.252	109,000
Block 6 Lot 3	0.215	93,000
Block 6 Lot 4	0.199	87,000
Block 6 Lot 5	0.162	70,000
Block 6 Lot 8	0.175	76,000
Block 6 Lot 7	0.174	75,000
Block 6 Lot 23	0.205	90,000
Block 6 Lot 24	0.291	126,000
Block 6 Lot 25	0.318	138,000
Block 7 Lot 1	0.300	130,000
Block 7 Lot 2	0.254	110,000
Block 7 Lot 3	0.263	113,000
Block 7 Lot 4	0.276	120,000
Block 7 Lot 5	0.205	90,000
Block 7 Lot 8	0.291	126,000
Block 7 Lot 9	0.205	90,000
Block 7 Lot 10	0.263	113,000
Block 7 Lot 11	0.276	120,000
Block 7 Lot 12	0.205	90,000
Block 7 Lot 13	0.205	90,000
Block 7 Lot 14	0.205	90,000
Block 7 Lot 19	0.300	130,000
Block 7 Lot 20	0.254	110,000
Block 7 Lot 21	0.263	113,000
Block 7 Lot 22	0.276	120,000
Block 7 Lot 23	0.205	90,000
Block 7 Lot 24	0.291	126,000
Block 7 Lot 25	0.318	138,000
Block 8 Lot 1	0.262	113,000
Block 8 Lot 2	0.220	95,000
Block 8 Lot 3	0.341	147,000
Block 8 Lot 4	0.308	134,000
Block 8 Lot 5	0.374	164,000
Block 8 Lot 6	0.286	125,000
Block 8 Lot 7	0.256	111,000
Block 8 Lot 8	0.309	135,000
Block 8 Lot 9	0.238	104,000
Block 8 Lot 10	0.234	102,000
Block 8 Lot 11	0.242	105,000
Block 8 Lot 12	0.201	88,000
Block 8 Lot 13	0.261	110,000
Block 8 Lot 14	0.272	118,000
Block 9 Lot 1	0.377	165,000
Block 9 Lot 2	0.377	165,000
Block 9 Lot 3	0.233	101,000
Block 9 Lot 4	0.233	101,000
Block 9 Lot 5	0.233	101,000



\\Roger\c-drive\DDI-PLATS\VRIDGE-VI\PLATVI.dwg, 02/23/01 03:18:36 PM, HP C LaserJet 4500-HP,
 1:142.891

Prepared by:
 Design Group International, Inc.
 1223 West Main Street, Suite D
 Rapid City, SD 57702
 605/748-0238