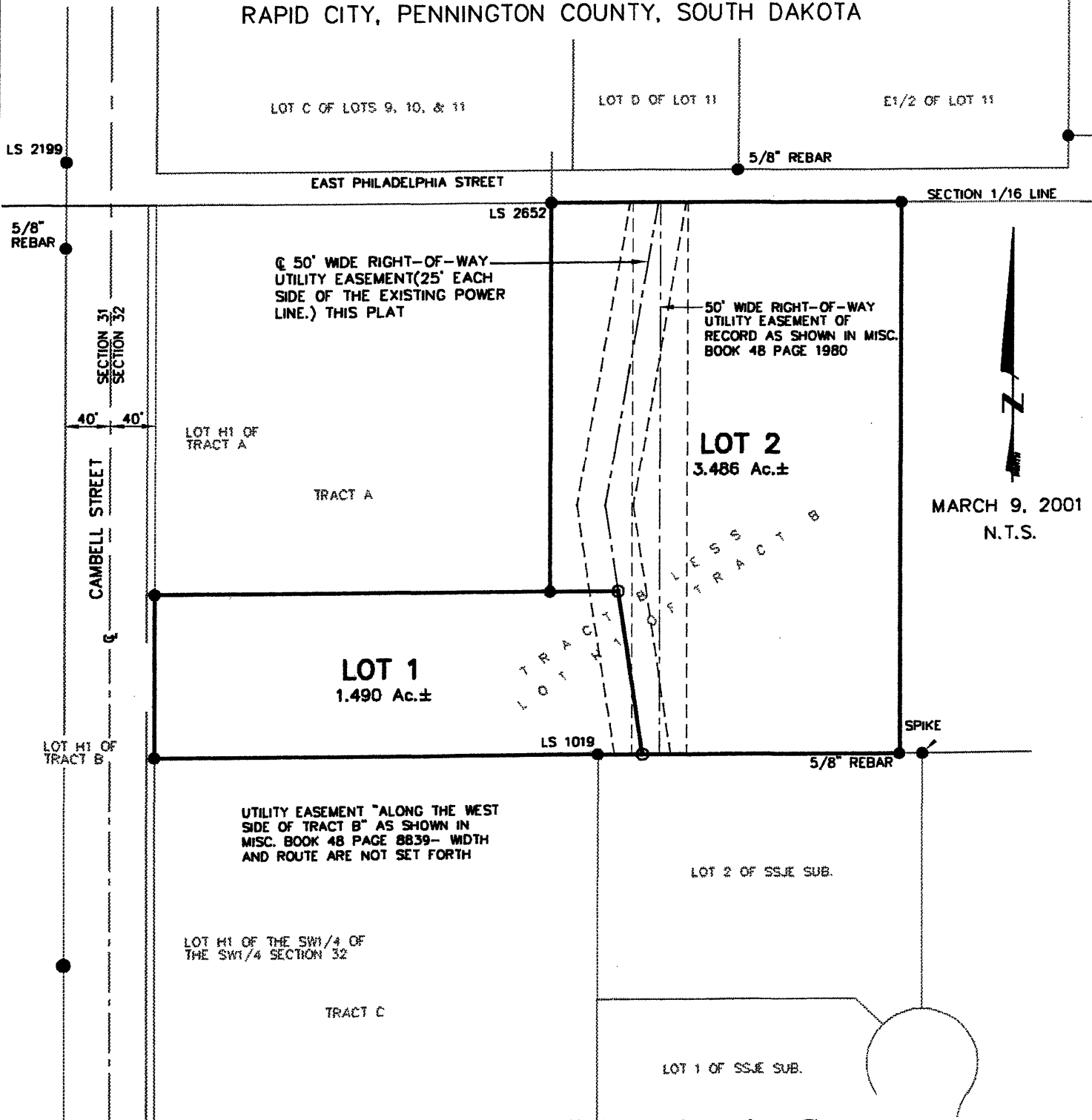


01PL019

LAYOUT PLAT OF  
**LOTS 1 AND 2**  
**DEVINE SUBDIVISION**  
 (formerly Tract B less Lot H1 of Tract B)  
 LOCATED IN SW<sup>1</sup>/<sub>4</sub> OF THE SW<sup>1</sup>/<sub>4</sub>  
 SECTION 32, T2N, R8E, BHM  
 RAPID CITY, PENNINGTON COUNTY, SOUTH DAKOTA



MARCH 9, 2001  
 N.T.S.



**Renner & Sperlich Engineering Co.**

616 Sixth St. • Rapid City, SD 57701 • 605/342-1191  
 FAX: 605/342-1405 • E-MAIL: RSEC@RAPIDNET.COM