

01SV002

PLAT OF
 LOTS 1 AND 2 OF TRACT L
 GRAY'S SUBDIVISION

(formerly Tract L of Gray's Subdivision)
 LOCATED IN THE N1/2 OF THE NWT1/4

SECTION 32, T2N, R7E, BHM
 RAPID CITY, PENNINGTON COUNTY, SOUTH DAKOTA

66' WIDE SECTION
 LINE R.O.W.
 66'
 33'
 33'

THIS CORNER IS AN ACCURATE
 LOCATION OF THE CORNER OF TRACT
 L AS PLATTED. IT IS NOT INTENDED
 TO BE AN ACCURATE LOCATION OF THE
 SECTION CORNER

SW 1/4 - SW 1/4

SE 1/4 - SW 1/4

66' WIDE SECTION
 LINE R.O.W.

SECTION 29
 SECTION 32

N89°56'17"E 2237.74'

N89°56'17"E 353.13'

LOT 1
 19.895 Ac.±

LOT 2
 19.895 Ac.±

N51°20'48"W
 N51°20'00"W
 995.16' (M)
 995.00' (R)

S67°30'05"W 390.11' (M)
 S67°30'00"W 390.00' (R)
 305.95' (M)
 N55°15'00"W

N53°24'13"E 683.06'
 394.17' (M)
 700.00' (R)



40' WIDE ACCESS AND
 UTILITY EASEMENT: 20'
 ON EACH SIDE OF THE
 LOT LINE: SEE DETAIL

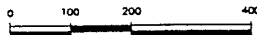
MEASURED THIS SURVEY

LINE	LENGTH	BEARING
L1	52.69	N70°22'25"W
L2	147.28	N71°42'32"W
L3	215.06	N85°30'22"W
L4	49.13	N89°56'17"E

RECORDED IN PREVIOUS SURVEY

LINE	LENGTH	BEARING
L3	215.00	N85°30'00"W

DECEMBER 19, 2000



SCALE 1" = 200'

BALANCE OF
 N1/2 - NW 1/4

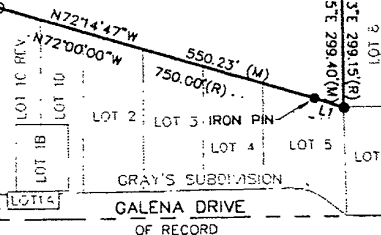
BALANCE OF
 N1/2 - NW 1/4

PROPOSED LOT 1

PROPOSED LOT 2

N59°13'33"E 288.77'
 344.51'

DETAIL OF ACCESS AND UTILITY EASEMENT



NOTES:

- ⊙ Denotes set 5/8" rebar with survey cap marked "Renner - 2652 and Sperlich"
- Denotes Found Survey Monument marked LS 2652 unless otherwise noted
- Denotes set 5/8" rebar with no cap for R.O.W. PC's & PT's
- (R) Rebar Recorded in previous plat or description