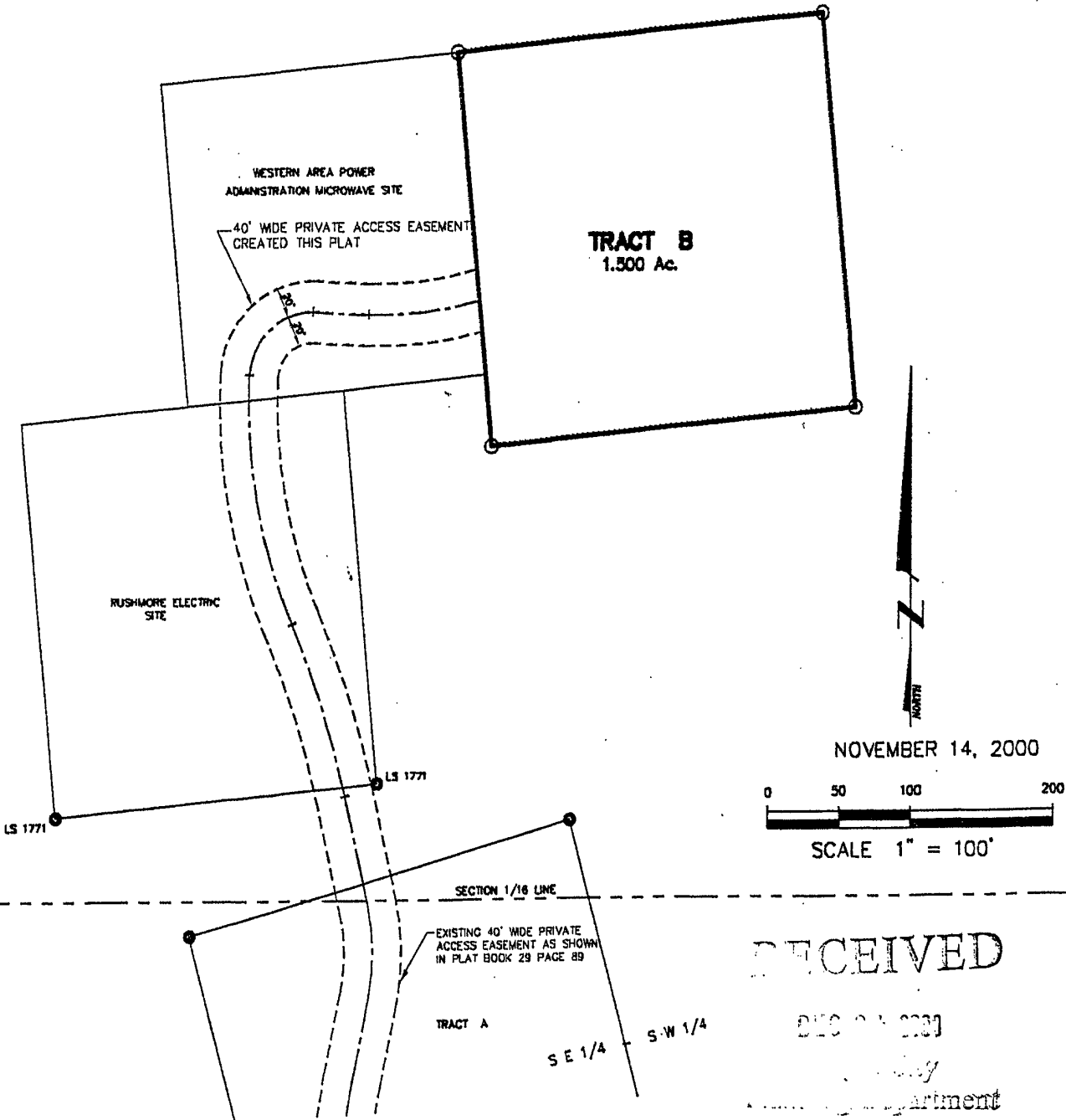


01SV001

PLAT OF  
**TRACT B AND EASEMENT**  
LOCATED IN THE NE1/4 OF THE SW1/4  
SECTION 23, T2N, R7E, BHM  
PENNINGTON COUNTY, SOUTH DAKOTA



**Renner & Sperlich Engineering Co.**

616 Sixth St. • Rapid City, SD 57701 • 605/342-1191