

## MEMORANDUM:

TO: MAYOR SHAW  
CITY COUNCIL MEMBERS

FROM: BONNIE HUGHES

SUBJECT: LEASE OF CITY OWNED LAND

DATE: MARCH 8, 2001

This request is from Federal Beef Processors to lease a parcel of land from the City of Rapid City for the purpose of constructing a parking lot. This request is to provide off street parking for employees, but also to provide additional public parking near the Executive Golf Course. Federal Beef is working to secure their facility and control access in and out of their property by identification cards. Since the flood of 1972 the City had leased a parking area along Rapid Creek to Black Hills Packing Company. With the closing and reopening of the plant, the previous agreement was not included in the transaction.

The area Federal Beef desires to lease is south of West Chicago and west of 12<sup>th</sup> Street. The size of the area will be determined should the City Council authorize staff to work with Federal Beef for lease of this site. The parking lot will be constructed to meet the city ordinances for parking lots, and will be open for use by the public. This would be the same kind of agreement the City has with Black Hills Harley Davidson and Kahler Real Estate. I have attached an aerial map showing the location Federal Beef is interested in leasing from the City.

Action requested: Authorize staff to work with Federal Beef on the leasing of city land, defining the area, and lease payments with the proposed agreement to be brought to the L&F meeting on March 28, 2001.

February 22, 2001

Ms. Bonnie Hughes  
Community Development Director  
300 Sixth Street  
Rapid City, SD 57701



RE: Parking – City Property

Dear Ms. Hughes:

This letter is in reference to obtaining an agreement with the City to utilize City property outside of Federal Beef Processor's Inc., for employee parking. In our current position we are land-locked. In an attempt to accommodate employee growth and alleviate problems of employee theft, we would like to have all our employees park outside the fence line of Federal Beef Processor's Inc.

I appreciate your assistance and cooperation in trying to establish employee parking. Any question or concerns you may have please feel free to contact me at 343-1414.

Sincerely,

Jan C. Yoakum, V.P. of Operations  
Federal Beef Processor's Inc.

### Federal Beef Processors, Inc.

Jan C. Yoakum  
V.P. of Operations



P.O. Box 2130  
1330 West Chicago St.  
Rapid City, SD 57709-2130

(605) 343-1414  
FAX: (605) 343-9378  
(800) 487-1338  
Cell: (605) 391-2456

### PEACE KEEPER SECURITY INC.

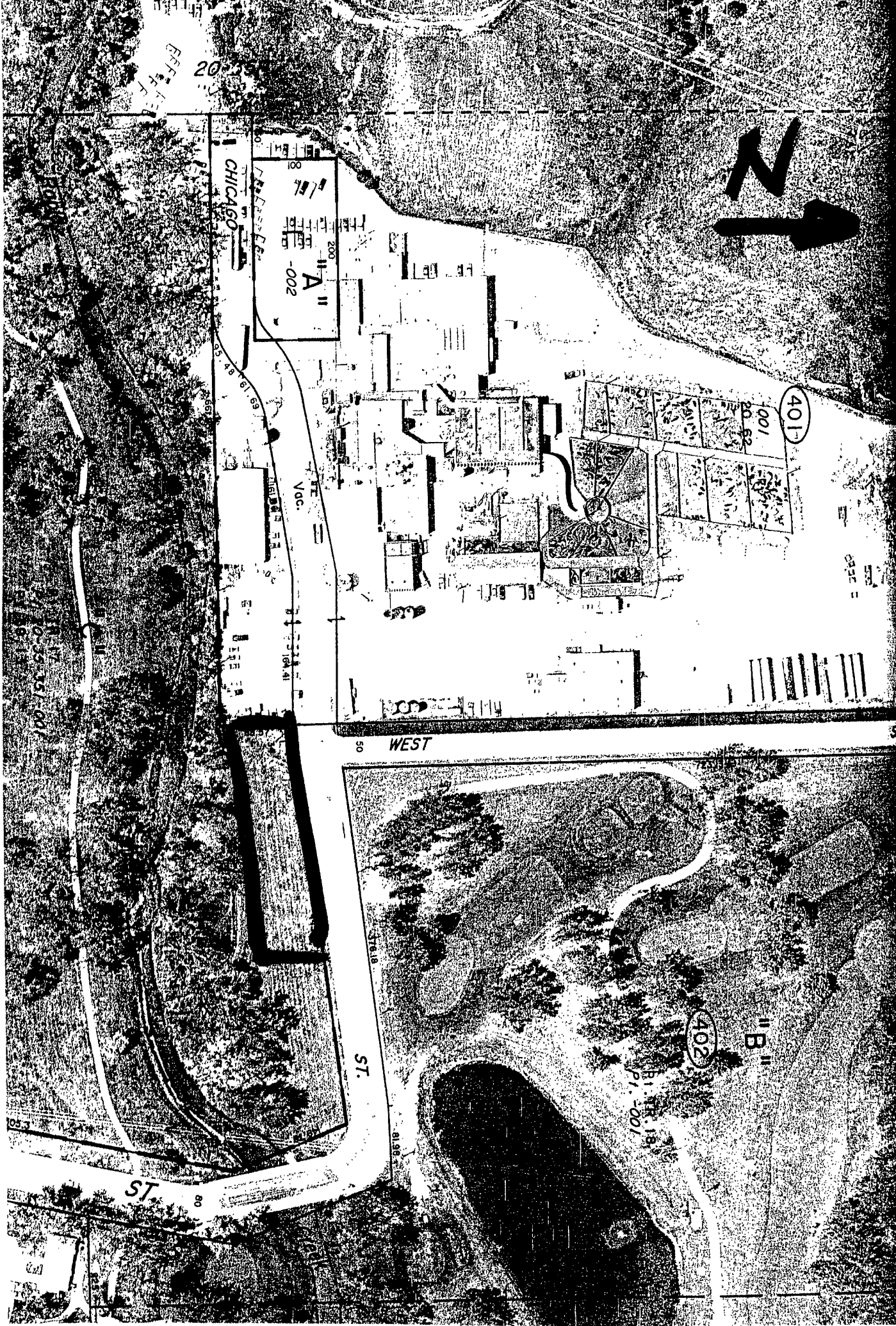
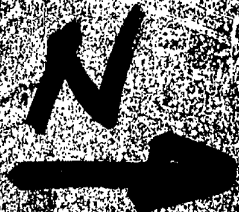
SECURITY SERVICES WITH INTEGRITY...



Tina Schuler  
Sales Representative  
PO Box 8073  
Rapid City, SD 57709

Commercial & Residential Security  
24 Hour On-site Security  
Security Patrol  
Special Events  
Investigations  
Protective Escorts

Cell. 390-9125  
office 605-341-8787



CHICAGO

A  
-002

401

001  
20-52

WEST

ST.

B

402

P. 1-001

ST.